

## **APPENDIX I**

### **PBA08 Remedial Investigation Summary**

**THIS PAGE INTENTIONALLY LEFT BLANK.**

## TABLE OF CONTENTS

|   |           |
|---|-----------|
| LIST OF TABLES .....  | i         |
| LIST OF FIGURES .....   | i         |
| ACRONYMS AND ABBREVIATIONS .....                                      | iii       |
| <b>I.0 REMEDIAL INVESTIGATION .....</b>                               | <b>1</b>  |
| I.1 SOIL CHARACTERIZATION .....                                       | 4         |
| I.1.1 Surface Soil Sampling Rationale and Methods .....               | 4         |
| I.1.2 Subsurface Soil Sampling Rationale and Methods .....            | 8         |
| I.2 SURFACE WATER AND SEDIMENT CHARACTERIZATION .....                 | 11        |
| I.2.1 Surface Water and Sediment Sampling Methods .....               | 12        |
| I.2.2 Load Line 5 Surface Water and Sediment Sampling Rationale ..... | 12        |
| I.3 CHANGES FROM THE WORK PLAN .....                                  | 14        |
| I.4 ANALYTICAL PROGRAM OVERVIEW .....                                 | 14        |
| I.4.1 Data Quality Objectives .....                                   | 14        |
| I.4.2 Quality Assurance and Quality Control .....                     | 15        |
| I.4.3 Field Analyses .....  | 16        |
| I.4.4 Laboratory Analyses .....                                       | 16        |
| I.4.5 Data Review, Verification, and Quality Assessment .....         | 17        |
| <b>REFERENCES .....</b>   | <b>21</b> |

## LIST OF TABLES

|   |     |
|---|-----|
| Table I-1. Chemicals Detected at Concentrations Above Screening Criteria in Previous Investigations ..... | 1   |
| Table I-2. PBA08 RI Surface Soil Samples and Rationales .....   | 6   |
| Table I-3. Subsurface Soil Rationale and Analyses .....   | I-9 |
| Table I-4. PBA08 RI Surface Water and Sediment Samples and Rationales .....                               | 13  |
| Table I-5. Changes from the PBA08 Sample and Analysis Plan .....  | 14  |
| Table I-6. Summary of PBA08 RI QA/QC Samples .....  | 15  |
| Table I-7. Summary of PBA08 RI Sample Preparation and Analytical Procedures .....                         | 16  |

## LIST OF FIGURES

|  |    |
|--|----|
| Figure I-1. PBA08 RI Surface Soil Sampling Decision Flowchart .....  | 2  |
| Figure I-2. PBA08 RI Subsurface Soil Sampling Decision Flowchart .....   | 3  |
| Figure I-3. Load Line 5 Map Showing Historical and PBA08 RI Sampling Locations – Former RVAAP/Camp Ravenna ..... | 19 |

**THIS PAGE INTENTIONALLY LEFT BLANK.**

## ACRONYMS AND ABBREVIATIONS

|             |   |
|-------------|---|
| ADR         | Automated Data Review   |
| AOC         | Area of Concern   |
| Army        | U.S. Department of the Army   |
| bgs         | Below Ground Surface  |
| DoD         | U.S. Department of Defense  |
| DPT         | Direct Push Technology  |
| DQO         | Data Quality Objective  |
| FCR         | Field Change Request  |
| FWCUG       | Facility-wide Cleanup Goal  |
| FWSAP       | <i>Facility-Wide Sampling and Analysis Plan</i>   |
| GPS         | Global Positioning System   |
| HQ          | Hazard Quotient   |
| IDW         | Investigation-Derived Waste   |
| ISM         | Incremental Sampling Method   |
| Ohio EPA    | Ohio Environmental Protection Agency  |
| PAH         | Polycyclic Aromatic Hydrocarbon   |
| PBA08 RI    | Performance-Based Acquisition 2008 Remedial Investigation   |
| PBA08 SAP   | Performance Based Acquisition 2008 Supplemental Investigation Sampling and Analysis Plan Addendum No. 1 |
| PCB         | Polychlorinated Biphenyl  |
| QA          | Quality Assurance   |
| QC          | Quality Control   |
| RI          | Remedial Investigation  |
| RVAAP       | Ravenna Army Ammunition Plant   |
| SAP         | Sampling and Analysis Plan  |
| SVOC        | Semi-volatile Organic Compound  |
| TAL         | Target Analyte List   |
| TestAmerica | TestAmerica Laboratories, Inc.  |
| USACE       | U.S. Army Corps of Engineers  |
| USEPA       | U.S. Environmental Protection Agency  |
| VOC         | Volatile Organic Compound   |

**THIS PAGE INTENTIONALLY LEFT BLANK.**

## I.0 REMEDIAL INVESTIGATION

---

This section presents the methods used for developing data quality objectives (DQOs), collecting field data, and managing analytical data and laboratory programs for the Performance-Based Acquisition 2008 Remedial Investigation (PBA08 RI) at Load Line 5. The PBA08 RI was implemented in accordance with the Performance Based Acquisition 2008 Supplemental Investigation Sampling and Analysis Plan Addendum No. 1 (PBA08 SAP) to supplement historical data and complete the remedial investigation (RI) phase of the Comprehensive Environmental Response, Compensation, and Liability Act process. The results of the PBA08 RI sampling completed in 2010 and 2012 were combined with the results of 2004 Characterization of 14 areas of concern (AOCs) and 2007 Investigation of Under Slab Surface Soil investigation to evaluate the nature and extent of contamination, assess potential future impacts to groundwater, conduct human health risk assessments and ecological risk assessments, and evaluate the need for remedial alternatives.

As part of the PBA08 RI DQOs, an initial screening approach was used to help focus the investigation on specific chemicals and areas to be further evaluated by assessing the nature and extent of contamination observed in historical samples (Section 3.2.2 of the PBA08 SAP). The screening approach presented in the PBA08 SAP compared sample results from previous investigations at Load Line 5 to the most protective chemical-specific facility-wide cleanup goals (FWCUGs) at the 1E-06 cancer risk level and non-carcinogenic risk hazard quotient (HQ) of 0.1, as presented in the Ravenna Army Ammunition Plant (RVAAP) Facility-wide Human Health Risk Assessors Manual (USACE 2005). The most protective FWCUGs are referred to as “screening criteria.” Previous results were also compared to FWCUGs at the higher target risk of 1E-05 and HQ of 1 to facilitate identification of potential source areas that may require additional sampling to refine the extent of contamination. The decision rules for surface and subsurface soil sampling outlined in the PBA08 SAP are shown in Figures I-1 and I-2. Table I-1 lists the chemicals with detected concentrations that exceed screening criteria in historical soil samples.

**Table I-1. Chemicals Detected at Concentrations Above Screening Criteria in Previous Investigations**

| Surface and Subsurface Soil   | Sediment | Surface Water |
|---|----------|---------------|
| Aluminum<br>Chromium<br>Iron<br>Manganese<br>Mercury<br>2-Methylnaphthalene<br>Acenaphthylene<br>Benzo(a)pyrene<br>Benzo(ghi)perylene<br>Phenanthrene | None     | None          |

<sup>a</sup> Sediment and surface water samples collected during the investigation were associated only with infrastructure (i.e., sumps, basins, and sewers) and are not included in the summary table.

Source: Characterization of 14 AOCs (MKM 2007)

AOC = Area of Concern

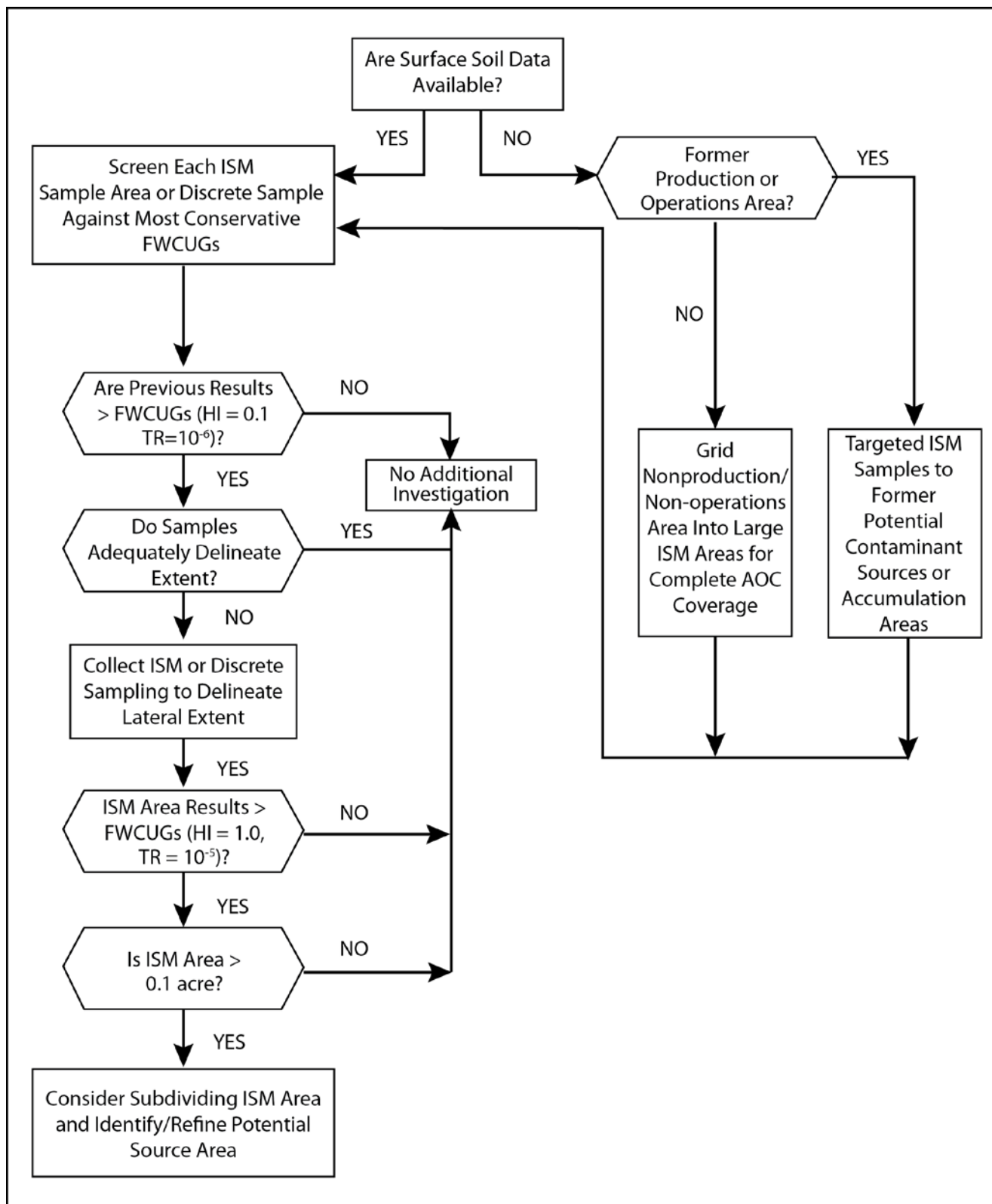


Figure I-1. PBA08 RI Surface Soil Sampling Decision Flowchart



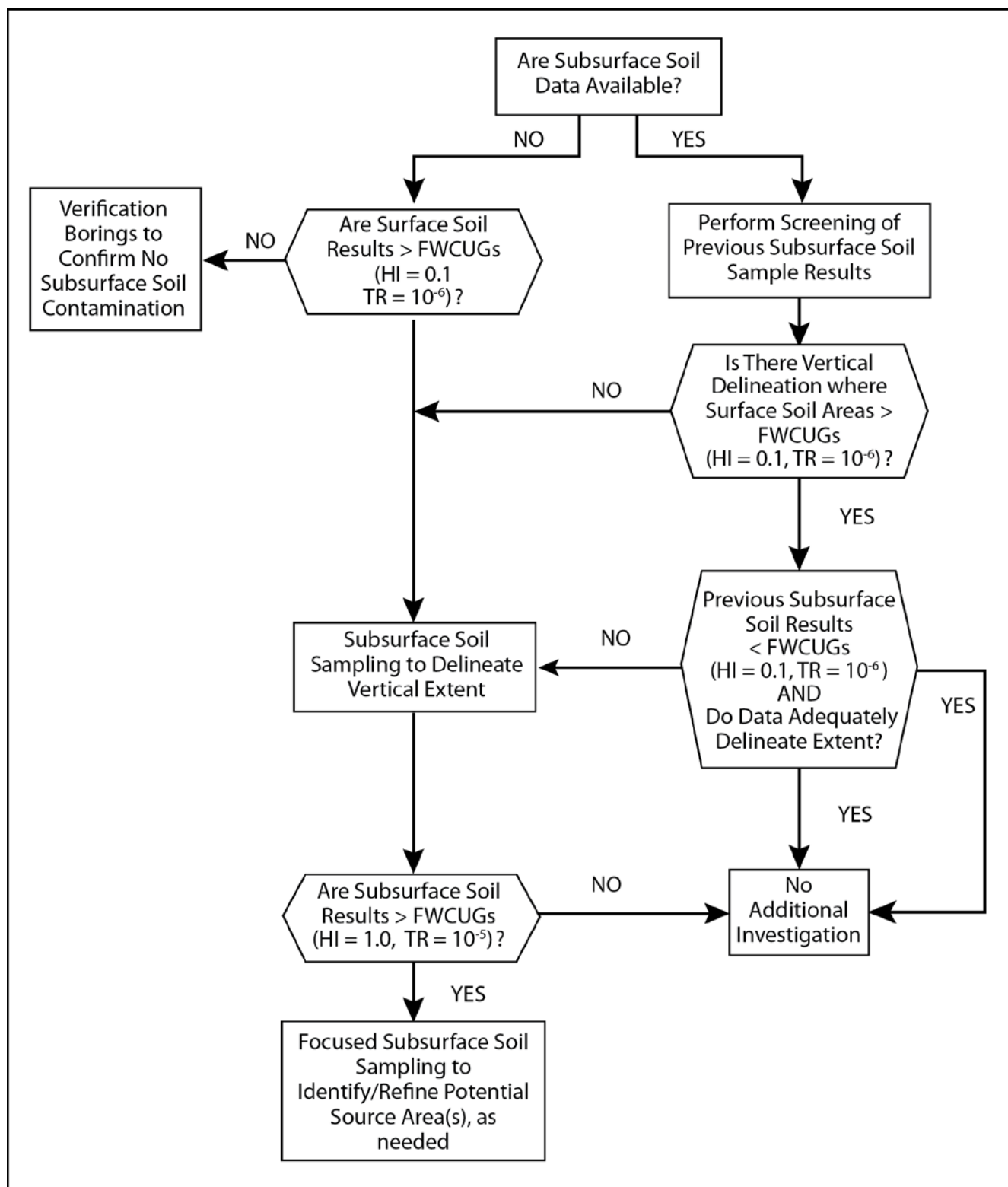


Figure I-2. PBA08 RI Subsurface Soil Sampling Decision Flowchart

Representatives of the U.S. Department of the Army (U.S. Army) and Ohio Environmental Protection Agency (Ohio EPA) reviewed and approved the PBA08 RI sample locations and rationale as part of the approval process for the PBA08 SAP in January 2010.

The PBA08 RI was conducted from February through April and October 2010 that included collecting surface water, sediment, surface soil, and subsurface soil using discrete and incremental sampling methodology (ISM) sampling techniques. In addition, one additional sediment sample (LL5sd-086-5872-SD) was collected from the Load Line 5 Wetland in August 2012.

No groundwater samples were collected during the PBA08 RI, as the current condition of groundwater will be evaluated as an individual AOC for the entire facility (designated as RVAAP-66) and addressed in a separate RI Report. The following sections describe the rationale and sample collection methods for each component of the PBA08 RI field investigation.

## **I.1 SOIL CHARACTERIZATION**

Soil samples were collected during the PBA08 RI to assess contaminant occurrence and distribution in surface and subsurface soil. The decision-making matrices for the surface and subsurface soil sampling plans are presented in Figures I-1 and I-2, respectively.

### **I.1.1 Surface Soil Sampling Rationale and Methods**

Since ISM was used for surface soil [0–1 ft below ground surface (bgs)] as part of the Characterization of 14 AOCs, ISM was also used for surface soil sampling during the PBA08 RI. The PBA08 RI sampled locations with the greatest likelihood of contamination (e.g., adjacent to production buildings or within sediment accumulation areas, such as ditches). Each ISM result was evaluated separately against the screening criteria for each chemical analyzed. Surface soil sampling to define the lateral extent of contamination was conducted according to the decision rules approved in the PBA08 SAP and is depicted in Figure I-1. All PBA08 RI surface soil samples were collected using ISM or discrete sampling techniques.

A total of 21 surface soil (16 ISM and 5 discrete) samples were collected at Load Line 5 during the PBA08 RI in 2010. One ISM sample was collected around a former ISM sample area to delineate locations where chemicals were detected above FWCUGs and to further define the lateral extent of contamination (Figure I-3). Eight ISM samples were collected in the Non-production Area and seven ISM samples were collected in the Former Production Area, including two surrounding former buildings to complete characterization of the AOC. Additionally, five discrete samples were collected to evaluate chromium speciation.

ISM samples were analyzed for target analyte list (TAL) metals, explosives, and polycyclic aromatic hydrocarbons (PAHs). Discrete samples for chromium speciation were analyzed for total and hexavalent chromium. Three ISM samples (15% of the total number of ISM samples collected) were analyzed for RVAAP full-suite analytes. References to the “RVAAP full-suite analytes” generally include analyses of TAL metals, explosives, propellants (nitrocellulose and nitroguanidine), semi-

volatile organic compounds (SVOCs), volatile organic compounds (VOCs), polychlorinated biphenyls (PCBs), and pesticides. If an ISM sample was analyzed for RVAAP full-suite analytes, all parameters except VOCs were collected and analyzed as part of the ISM sample process, and the VOCs were analyzed from a discrete soil sample collected from within the ISM sample area. Nitroglycerin was analyzed under U.S. Environmental Protection Agency (USEPA) Method 8330 and was reported as an explosive chemical. Table I-2 presents the specific rationale for each surface soil sample collected for the PBA08 RI.

For the PBA08 RI, the corners of each of the designated ISM sampling areas were located using a digital global positioning system (GPS) and were marked using wooden stakes. Sampling crews selected aliquot locations by walking over the entire ISM sampling area and marking the requisite number of points using flagging. At least 30 aliquots were collected for each ISM sample. Aliquot locations were randomly selected in the field and were not predetermined using a grid.

Approximately equal sample volume aliquots were collected from 0-1 ft bgs using a decontaminated 5/8-inch-diameter push probe. A soil description was completed for each ISM sample and is included in Appendix A.

All aliquots collected from a given ISM sample area were combined in a labeled container for transport to the laboratory in accordance with the PBA08 SAP. At the laboratory, each sample was air-dried, sieved, and ground for specified non-volatile chemical analyses.

Quality control (QC) field duplicate and quality assurance (QA) split samples were collected from ISM sample areas at 10% frequency (two samples). The QC field duplicate samples were submitted to the laboratory as “blind” and were used to determine whether the field sampling technique was reproducible, and as an indicator of sample heterogeneity. The QA split samples were sent to a U.S. Army Corps of Engineers (USACE) QA laboratory for independent analysis and evaluation of analytical results obtained by the primary laboratory.

QA/QC samples were collected as replicate ISM samples requiring three separate ISM samples from the same sample area. The QA/QC samples were collected from a set of 30 aliquot locations that were positioned adjacent to the location used for the initial ISM sample. Aliquots for QA/QC samples were collected in separate stainless steel bowls and placed into separate labeled containers.

ISM was not utilized for samples collected for VOC analysis because air drying, mixing, and sieving aliquots required by the method could result in the loss of VOCs from the sample. For ISM sample areas designated for VOC analysis, one discrete sample was collected from 0-1 ft bgs within the ISM sample area using the bucket hand auger method described in the PBA08 SAP. The specific location of the discrete sample was randomly chosen. Soil portions designated for VOC analyses were not homogenized in the field but were placed directly in the sample container and compacted to zero headspace.

**Table I-2. PBA08 RI Surface Soil Samples and Rationales**

| PBA08 RI Location | Targeted Area   | Purpose  | Analyses Performed | Explosives | VOCs | Pesticides/ PCBs | SVOC |
|-------------------|---|--|--------------------|------------|------|------------------|------|
|                   |   |  | Metals             |            |      |                  |      |
| LL5ss-062M        | LL5ss-005M (Building 1F-8)  | Define lateral extent of previously identified surface contamination (1941-1945 – Delay Loading House) | Y                  | Y          | N    | N                | PAH  |
| LL5ss-063M        | Northern portion of FPA near Buildings 1F-11 and 1F-15                                    | Complete characterization of FPA   | Y                  | Y          | N    | N                | PAH  |
|                   |   | QA/QC  | Y                  | Y          | N    | N                | PAH  |
|                   |   | QA/QC  | Y                  | Y          | N    | N                | PAH  |
| LL5ss-064M        | Eastern portion of FPA near Buildings 1F-10, 1F-11, and 1F-12                             | Complete characterization of FPA   | Y                  | Y          | N    | N                | PAH  |
| LL5ss-065M        | Western portion of FPA near Buildings 1F-4, 1F-7, 1F-8, and 1F-20                         | Complete characterization of FPA   | Y                  | Y          | N    | N                | PAH  |
| LL5ss-066M        | Southeastern portion of FPA near Buildings 1F-1, 1F-2, 1F-3, 1F-4, 1F-9, 1F-18, and 1F-19 | Complete characterization of FPA   | Y                  | Y          | N    | N                | PAH  |
| LL5ss-067M        | Southwestern portion of FPA near Buildings 1F-6 and 1F-7                                  | Complete characterization of FPA   | Y                  | Y          | N    | N                | PAH  |
| LL5ss-068M        | Northern portion of NPA, except Building 1F-14 footprint                                  | Complete characterization of NPA   | Y                  | Y          | N    | N                | PAH  |
| LL5ss-069M        | Northeastern portion of NPA   | Complete characterization of NPA, analyzed for RVAAP full-suite analytes                               | Y                  | Y          | Y    | Y                | Y    |
| LL5ss-070M        | Eastern portion of NPA  | Complete characterization of NPA   | Y                  | Y          | N    | N                | PAH  |
| LL5ss-071M        | Southeastern portion of NPA   | Complete characterization of NPA   | Y                  | Y          | N    | N                | PAH  |

**Table I-2. PBA08 RI Surface Soil Samples and Rationales (continued)**

| PBA08 RI Location | Targeted Area   | Purpose   | Analyses Performed | Explosives | VOCs | Pesticides/PCBs | SVOC |
|-------------------|---|---|--------------------|------------|------|-----------------|------|
|                   |   |   | Metals             |            |      |                 |      |
| LL5ss-072M        | Southwestern portion of NPA   | Complete characterization of NPA, analyzed for RVAAP full-suite analytes                                      | Y                  | Y          | Y    | Y               | Y    |
|                   |   | QA/QC   | Y                  | Y          | Y    | Y               | Y    |
|                   |   | QA/QC   | Y                  | Y          | Y    | Y               | Y    |
| LL5ss-073M        | Western portion of NPA  | Complete characterization of NPA  | Y                  | Y          | N    | N               | PAH  |
| LL5ss-074M        | Northwestern portion of NPA, except Building 1F-14 and 1F-13 footprints | Complete characterization of NPA  | Y                  | Y          | N    | N               | PAH  |
| LL5ss-075M        | Building 1F-13 footprint  | Complete characterization of areas around former buildings in the FPA (1941-1945 - Change House)              | Y                  | Y          | N    | N               | PAH  |
| LL5ss-076M        | Building 1F-14 footprint  | Complete characterization of areas around former buildings in the FPA, analyzed for RVAAP full-suite analytes | Y                  | Y          | Y    | Y               | Y    |
| LL5ss-077M        | Drainage Ditch  | Characterization of a dry ditch in NPA (along southern perimeter road) (1941-1945 - Change House)             | Y                  | Y          | N    | N               | PAH  |

FPA = Former production area.

NPA = Non-production area.

PAH = Polycyclic aromatic hydrocarbon.

PBA08 RI = Performance-based Acquisition 2008 Remedial Investigation.

PCB = Polychlorinated biphenyl.

QA = Quality assurance.

QC = Quality control.

RVAAP = Ravenna Army Ammunition Plant.

SVOC = Semi-volatile organic compound.

VOC = Volatile organic compound.

In addition to the ISM surface soil samples, five discrete chromium speciation samples were collected to evaluate the potential contribution of hexavalent chromium to the total chromium concentrations in soil. Samples from 0-1 ft bgs were collected in accordance with the bucket hand auger method described in Section 4.5.2.1.1 of the *Facility-Wide Sampling and Analysis Plan* (USACE 2001) (herein referred to as the FWSAP). An updated version of the FWSAP was developed in February 2011 and approved by the Ohio EPA; however, the PBA08 RI was implemented prior to approval of this updated version. Two samples were collected from areas previously identified as having elevated total chromium concentrations, and one sample was collected from an area previously identified as having a total chromium concentration near background concentrations. Two additional speciation samples were collected in October 2010 to verify preliminary speciation results. Field duplicate samples were not collected for chromium speciation samples. A sample log including soil description was completed for each sample, and all logs are included in Appendix A.

After the discrete samples were collected, excess soil was designated as investigation-derived waste (IDW) and placed in lined, labeled 55-gal drums that were sealed after use and staged at Building 1036. IDW management practices for all media are discussed in Appendix F. Hand auger borings were backfilled to ground surface with dry bentonite chips and hydrated with the project-approved potable water.

### **I.1.2 Subsurface Soil Sampling Rationale and Methods**

The PBA08 RI used discrete samples from seven soil borings to characterize subsurface soil. The subsurface soil decision rules are presented in Figure I-2 and were based upon prior surface soil sampling results to define the vertical extent of contamination. Subsurface soil sampling was conducted according to the decision rules approved in the PBA08 SAP. The subsurface soil borings were located based on three objectives:

- Borings at locations where previous surface soil sampling results exceeded screening criteria and vertical delineation was warranted.
- Borings at locations where previous surface soil sampling results only slightly exceeded screening criteria to confirm that contaminant concentrations did not increase with depth.
- Borings at locations not previously sampled to provide full characterization of surface and subsurface soil.

The subsurface soil was characterized by placing borings in various areas, including areas with previous surface soil results greater than the screening criteria, areas with previous results only slightly greater than the screening criteria, and areas not previously sampled. In all cases, subsurface borings were biased toward areas where contamination from historical uses or site drainage was most likely. Soil samples from seven soil borings installed in ISM areas with historical screening criteria exceedances were collected to further delineate the vertical extent of contamination in subsurface soil at the AOC (Figure I-3). These included seven samples in previous ISM areas. Table I-3 presents the specific rationale for each subsurface soil sample collected for the PBA08 RI.

**Table I-3. Subsurface Soil Rationale and Analyses**

| PBA08<br>RI<br>Location | Comments/Rationale  | Sample<br>Type | Depth<br>(ft bgs) | Analyses<br>Performed | Explosives | VOCs | Pesticides/<br>PCBs | SVOC |
|-------------------------|---|----------------|-------------------|-----------------------|------------|------|---------------------|------|
|                         |   |                |                   | Metals                |            |      |                     |      |
| LL5sb-052               | Delineate vertical extent of previously identified contamination in LL5ss-018M (Drainage Ditch in NPA exiting AOC)                                | Discrete       | 0-1               | Y                     | Y          | N    | N                   | N    |
|                         |   | Discrete       | 1-4               | Y                     | Y          | N    | N                   | N    |
|                         |   | Discrete       | 4-7               | Y                     | Y          | N    | N                   | N    |
|                         |   | NA             | 7-13              | N                     | N          | N    | N                   | N    |
|                         | QA/QC   | Discrete       | 0-1               | Y                     | Y          | N    | N                   | N    |
|                         | QA/QC   | Discrete       | 1-4               | Y                     | Y          | N    | N                   | N    |
|                         | QA/QC   | Discrete       | 4-7               | Y                     | Y          | N    | N                   | N    |
| LL5sb-053               | Delineate vertical extent of previously identified contamination in LL5ss-002M (Building 1F-15), analyzed for RVAAP full-suite analytes           | Discrete       | 0-1               | Y                     | Y          | Y    | Y                   | Y    |
|                         |   | Discrete       | 1-4               | Y                     | Y          | Y    | Y                   | Y    |
|                         |   | Discrete       | 4-7               | Y                     | Y          | Y    | Y                   | Y    |
|                         |   | NA             | 7-13              | N                     | N          | N    | N                   | N    |
| LL5sb-054               | Delineated vertical extent of previously identified contamination in LL5ss-001M (Building 1F-11)  | Discrete       | 0-1               | Y                     | Y          | N    | N                   | PAH  |
|                         |   | Discrete       | 1-4               | Y                     | Y          | N    | N                   | PAH  |
|                         |   | Discrete       | 4-7               | Y                     | Y          | N    | N                   | PAH  |
|                         |   | NA             | 7-13              | N                     | N          | N    | N                   | N    |
| LL5sb-055               | Delineate vertical extent and confirm presence of previously identified contamination in LL5ss-005M (Building 1F-8)                               | Discrete       | 0-1               | Y                     | Y          | N    | N                   | PAH  |
| LL5sb-056               | Delineate vertical extent of previously identified contamination in LL5ss-012M (Building 1F-3)  | Discrete       | 0-1               | Y                     | Y          | N    | N                   | PAH  |
|                         |   | Discrete       | 1-4               | Y                     | Y          | N    | N                   | PAH  |
| LL5sb-057               | Delineate vertical extent of previously identified contamination in LL5ss-029M (drainage ditch in NPA exiting AOC). Bedrock encountered at 3.8 ft | Discrete       | 0-1               | Y                     | Y          | N    | N                   | PAH  |
|                         |   | Discrete       | 1-3.8             | Y                     | Y          | N    | N                   | PAH  |
|                         |   | NS             | 4-7               | N                     | N          | N    | N                   | N    |
|                         |   | NS             | 7-13              | N                     | N          | N    | N                   | N    |

**Table I-3. Subsurface Soil Rationale and Analyses**

| <b>PBA08<br/>RI<br/>Location</b> | <b>Comments/Rationale</b>  | <b>Sample<br/>Type</b> | <b>Depth<br/>(ft bgs)</b> | <b>Analyses<br/>Performed</b> | <b>Explosives</b> | <b>VOCs</b> | <b>Pesticides/<br/>PCBs</b> | <b>SVOC</b> |
|----------------------------------|--|------------------------|---------------------------|-------------------------------|-------------------|-------------|-----------------------------|-------------|
| LL5sb-058                        | Delineate vertical extent of previously identified contamination in LL5ss-021M (drainage ditch in NPA exiting AOC). Bedrock encountered at 4 ft. | Discrete               | 0-1                       | Y                             | Y                 | N           | N                           | PAH         |
|                                  |  | Discrete               | 1-4                       | Y                             | Y                 | N           | N                           | PAH         |
|                                  |  | NS                     | 4-7                       | N                             | N                 | N           | N                           | N           |
|                                  |  | NS                     | 7-8                       | N                             | N                 | N           | N                           | N           |

<sup>a</sup>One sample (10%) from 7-13 ft was submitted for laboratory analysis to characterize subsurface soil to 13 ft bgs.

AOC = Area of concern.

bgs = Below ground surface.

ft = Feet.

NA = Sample not analyzed by the laboratory based on preliminary screening criteria results of the 4-7 ft bgs sample interval.

NPA = Non-production area.

NS = Not sampled due to refusal.

PAH = Polycyclic aromatic hydrocarbon.

PBA08 RI = Performance-based Acquisition 2008 Remedial Investigation.

PCB = Polychlorinated biphenyl.

QA = Quality assurance.

QC = Quality control.

RVAAP = Ravenna Army and Ammunition Plant.

SVOC = Semi-volatile organic compound.

VOC = Volatile organic compound.



Subsurface soil borings were completed by direct push technology (DPT) using a Geoprobe® and/or hand auger. DPT soil samples were collected in a single-use acetate liner at discrete sample locations and hand auger samples were collected in a chemically decontaminated 3-inch-diameter stainless steel auger bucket.

To assess the depths of exposure of the Resident Receptor, each soil boring was sampled at 0-1, 1-4, 4-7, and 7-13 ft bgs. These sample intervals were selected to be able to evaluate surface and subsurface exposure depths for the Resident Receptor (0-1 and 1-13 ft bgs) and National Guard Trainee (0-4 and 4-7 ft bgs). Each interval was composited and homogenized in a stainless steel bowl, with the exception of VOC samples. The deep sample interval was archived on site, while the 4–7 ft bgs interval sample was analyzed under an expedited five-day turnaround time. As specified in the PBA08 SAP, the deep sample interval (7-13 ft bgs) would be analyzed for the following reasons:

1. One chemical had a concentration that exceeded screening criteria in the 4–7 ft bgs sample; or
2. To ensure at least 10% of all subsurface samples from 7–13 ft bgs were submitted for laboratory analysis for adequate characterization of subsurface soil to 13 ft bgs.

One sample collected from the 7-13 ft bgs sample interval was submitted for laboratory analysis for Load Line 5. No 7–13 ft bgs samples were analyzed due to preliminary screening criteria exceedances within the 4–7 ft bgs sample interval. Sample LL5SB-055-5164-SO was analyzed to ensure adequate characterization of 7–13 ft bgs was performed. All subsurface soil samples were analyzed for TAL metals, explosives, and PAHs. A minimum of 15% of samples (three) were analyzed for RVAAP full-suite analytes. Three QC field duplicate and three QA split samples were collected to satisfy the QA/QC sample requirements of 10% frequency for subsurface soil samples. A lithologic soil description was completed for each soil boring and is included in Appendix A.

No geotechnical samples were collected at this AOC. Geotechnical samples were collected at Load Lines 7, 10, and 11 during the PBA08 RI and data generated from these samples are used for this Load Line 5 RI Report. After the discrete samples were collected, excess soil was designated as IDW and placed in lined, labeled 55-gal drums that were sealed after use and staged at Building 1036. IDW management practices for all media are discussed in Appendix F. Hand auger borings were backfilled to ground surface with dry bentonite chips while hydrating with the project-approved potable water.

## **I.2 SURFACE WATER AND SEDIMENT CHARACTERIZATION**

For the purposes of this report, the term “surface soil” includes dry sediment. Dry sediment refers to unconsolidated inorganic and organic material within conveyances, ditches, or low lying areas that occasionally may be covered with water, usually following a precipitation event or due to snowmelt. Dry sediment is not covered with water for extended periods and typically is dry within seven days of precipitation. Dry sediment does not function as a permanent habitat for aquatic organisms, although it may serve as a natural medium for the growth of terrestrial organisms. Dry sediment is addressed the same as surface soil (0–1 ft bgs) in terms of contaminant nature and extent, fate and transport, and risk exposure models. The term “sediment,” as used in this report, refers to wet sediment within

conveyances, ditches, wetlands, or water bodies that are inundated for extended periods of time. These definitions and terminology usage are consistent with the FWCUG Report.

Surface water and sediment samples were collected to characterize current conditions and assess potential entrance and exit pathways from the AOC (Figure I-3). Three co-located surface water and sediment samples were collected during the PBA08 RI: one sample from the Load Line 5 Wetland and two samples from the streams exiting from the AOC.

### **I.2.1 Surface Water and Sediment Sampling Methods**

The surface water grab samples were collected by the handheld bottle method in accordance with Section 4.3 of the PBA08 SAP and were analyzed for RVAAP full-suite analytes. Water quality parameters for temperature, pH, conductivity, dissolved oxygen, and turbidity were collected using calibrated water quality meters (Hanna Instrument Models 9828 and 98703). A surface water and sediment sample collection sheet was completed for each sample location and is included in Appendix A.

The sediment samples were collected in accordance with Section 4.2 of the PBA08 SAP. The samples consisted of a multi-aliquot composite with 10 aliquots selected randomly within a 5 ft radius of the identified sample location. Each aliquot was collected by a push probe to a maximum depth of 0.5 ft bgs. The aliquots were homogenized in a stainless steel bowl, transferred to the appropriate, labeled sample container, and analyzed for RVAAP full-suite analytes. For VOC analysis, one discrete sample collected from 0–0.5 ft bgs was collected within the 5 ft sampling radius and placed directly in the appropriate, labeled sample container.

### **I.2.2 Load Line 5 Surface Water and Sediment Sampling Rationale**

During previous investigations, surface water or sediment samples were collected for characterization purposes at Load Line 5. One co-located surface water and sediment sample and one sediment sample were collected during the PBA08 RI from the Load Line 5 Wetland. Additionally, two co-located surface water and sediment samples were collected from the streams exiting the AOC. The samples were collected in accordance with the following decision rules approved in the PBA08 SAP:

- At AOCs where overland flow of contaminants could occur to nearby perennial streams, those streams will be sampled. The sample locations may be outside of the AOC boundaries, but the samples represent the areas potentially impacted by the AOCs (Load Lines 5, 6, 7, 9, 10, and Wet Storage Area).
- At points where contamination may migrate out of the AOC area, such as a ditch or a stream near the AOC boundary, samples will be collected to characterize current conditions and determine whether contaminant migration may occur at surface water runoff exit points.

Table I-4 presents the specific rationale for the surface water and sediment samples collected for the PBA08 RI.

**Table I-4. PBA08 RI Surface Water and Sediment Samples and Rationales**

| PBA08 RI Location | Targeted Area       | Comments/Rationale   | Sample Type | Depth (ft bgs) | Analyses Performed |            |      |                 |      |
|-------------------|---------------------|--|-------------|----------------|--------------------|------------|------|-----------------|------|
|                   |                     |  |             |                | Metals             | Explosives | VOCs | Pesticides/PCBs | SVOC |
| LL5sd-078         | Load Line 5 Wetland | Characterization of Load Line 5 Wetland observed during the PBA08 RI and not historically observed or sampled  | Composite   | 0-0.5          | Y                  | Y          | N    | N               | Y    |
| LL5sw-078         |                     |  | Discrete    | NA             | Y                  | Y          | Y    | Y               | Y    |
| LL5sd-086         | Load Line 5 Wetland | Recollected sediment for RVAAP full-suite analytes.  | Composite   | 0-0.5          | Y                  | Y          | Y    | Y               | Y    |
| FWSsw-102         | Off-AOC             | Characterize current conditions and potential exit pathways from the Fuze and Booster Hill area and provide data for nature and extent. Analyzed for RVAAP full-suite analytes. Surface water was also analyzed for nitrate. | Composite   | 0-0.5          | Y                  | Y          | Y    | Y               | Y    |
| FWSsd-102         |                     |  | Discrete    | NA             | Y                  | Y          | Y    | Y               | Y    |
| FWSsw-103         | Off-AOC             | Characterize current conditions and potential exit pathways from the Fuze and Booster Hill area and provide data for the nature and extent. Analyzed for RVAAP full-suite analytes.  | Composite   | NA             | Y                  | Y          | Y    | Y               | Y    |
| FWSsd-103         |                     |  | Discrete    | 0-0.5          | Y                  | Y          | Y    | Y               | Y    |

AOC = Area of concern.

bgs = Below ground surface.

ft = Feet.

NA = Not Applicable.

PBA08 RI = Performance Based Acquisition 2008 Remedial Investigation.

PCB = Polychlorinated biphenyl.

RVAAP = Ravenna Army Ammunition Plant.

SVOC = Semi-volatile organic compound.

VOC = Volatile organic compound.

### I.3 CHANGES FROM THE WORK PLAN

Changes to the PBA08 SAP are documented in the field change requests (FCRs) provided in Appendix B. Changes made in the field based on AOC-specific conditions are not documented on FCRs but on the field sampling logs (Appendix A). These changes are presented in the field sampling logs and presented in Table I-5.

**Table I-5. Changes from the PBA08 Sample and Analysis Plan**

| Station   | Affected Sample   | Date Sampled | Change/Rationale  |
|-----------|-------------------|--------------|---|
| LL5sb-052 | LL5SB-052-5149-SO | 3/1/2010     | Station location was re-located from the slope of the ditch to the bottom of the ditch in order to access the location with the drilling equipment.   |
|           | LL5SB-052-5150-SO | 3/1/2010     |   |
|           | LL5SB-052-5151-SO | 3/1/2010     |   |
|           | LL5SB-052-5152-SO | 3/1/2010     |   |
|           | LL5SB-052-6094-FD | 3/1/2010     |   |
|           | LL5SB-052-6092-FD | 3/1/2010     |   |
|           | LL5SB-052-6093-FD | 3/1/2010     |   |
| LL5sb-057 | LL5SB-057-5169-SO | 3/8/2010     | Station location moved ~1.5 ft northwest due to steep slope angle at the original station location.   |
|           | LL5SB-057-5170-SO | 3/8/2010     |   |
| LL5sb-058 | LL5SB-058-5173-SO | 3/8/2010     | Station location moved due to steep slope angle at the original station location.   |
|           | LL5SB-058-5174-SO | 3/8/2010     |   |
| LL5sw-078 | LL5SW-078-5796-SW | 4/13/2010    | Surface water sample collected 30 ft east of original station location in order to prevent disturbing the sediment when collecting the water sample.  |
| LL5ss-075 | LL5SS-075-5811-SO | 10/18/2010   | Additional chromium speciation sample collected to verify preliminary results.  |
| LL5ss-070 | LL5SS-070-5810-SO | 10/18/2010   | Additional chromium speciation sample collected to verify preliminary results.  |
| LL5sd-078 | LL5SD-078-5797-SD | 4/13/2010    | An additional co-located sediment and surface water sample was collected at the Load Line 5 wetland observed by field crews during the PBA08 RI. This wetland was not previously sampled because it was not observed in the historical investigation. This additional co-located sample will be used to supplement the 21 multi-acre ISM samples also collected at the AOC. |
| LL5sw-078 | LL5SW-078-5796-SW | 4/13/2010    |   |
| LL5sd-086 | LL5SD-086-5872-SD | 8/9/2012     | Sample was collected to provide further analysis of constituents in the Load Line 5 Wetland.  |

AOC = Area of Concern

ISM = Incremental Sampling Method

PBA08 RI = Performance-Based Acquisition 2008 Remedial Investigation

PBA08 SAP = Performance-Based Acquisition 2008 Sampling and Analysis Plan

### I.4 ANALYTICAL PROGRAM OVERVIEW

The following sections describe the analytical program followed during the PBA08 RI.

#### I.4.1 Data Quality Objectives

Samples were collected and analyzed according to the FWSAP and PBA08 SAP that were prepared in accordance with USACE and USEPA guidance. The FWSAP and PBA08 SAP outline the organization, objectives, intended data uses, and QA/QC activities to perform in order to achieve the

desired DQOs for maintaining the defensibility of the data. Project DQOs were established in accordance with USEPA Region 5 guidance. Requirements for sample collection, handling, analysis criteria, target analytes, laboratory criteria, and data verification criteria for the RI are consistent with USEPA and U.S. Department of Defense (DoD) requirements. DQOs for this project include analytical precision, accuracy, representativeness, completeness, comparability, and sensitivity for the measurement data. Appendix C presents an assessment of the analytical program objectives.

#### **I.4.2 Quality Assurance and Quality Control**

Samples were properly packaged for shipment and transferred by courier to the laboratory for analysis. A signed chain-of-custody record (included in Appendix D) with sample numbers and locations was enclosed with each shipment. When transferring possession of samples, the individuals relinquishing and receiving the samples signed, dated, and noted the time on the record. All shipments were in compliance with applicable U.S. Department of Transportation regulations for environmental samples.

QA/QC samples for this project included field blanks, trip blanks, QC field duplicates, QA split samples, laboratory method blanks, laboratory control samples, laboratory duplicates, and matrix spike/matrix spike duplicate samples. Table I-6 presents a summary of QA/QC samples utilized during the PBA08 RI and how each sample type was used to support the quality of the analytical data. Evaluation of QA/QC samples and their contribution to documenting project data quality is provided in Appendix C.

**Table I-6. Summary of PBA08 RI QA/QC Samples**

| <b>Sample Type</b>                  | <b>Rationale</b>   |
|-------------------------------------|--|
| Field Blank                         | Analyzed to determine contamination in source material that may contribute to sample contamination.  |
| Trip Blank                          | Analyzed to assess the potential for cross contamination of samples due to contaminant interference during sample shipment and storage.  |
| Field Duplicate                     | Analyzed to determine sample heterogeneity and sampling methodology reproducibility.   |
| Equipment Rinsate                   | Analyzed to assess the adequacy of the equipment decontamination processes for non-dedicated sampling equipment.   |
| Laboratory Method Blanks            | Analyzed to assess the contamination level in the laboratory preparation and analysis process.   |
| Laboratory Duplicate Samples        | Analyzed to assist in determining the analytical reproducibility and precision of the analysis for the samples of interest and provide information about the effect of the sample matrix on the measurement methodology. |
| Matrix Spike/Matrix Spike Duplicate |  |
| Laboratory Control Sample           | Analyzed to determine the accuracy and precision of the analytical method implemented by the laboratory and to monitor the laboratory's analytical process control.  |
| QA Split                            | Analyzed to provide independent verification of the accuracy and precision of the principal analytical laboratory.   |

QA = Quality Assurance.

QC = Quality Control.

PBA08 RI = Performance-Based Acquisition 2008 Remedial Investigation.

### **I.4.3 Field Analyses**

No field laboratory analyses (i.e., field explosives testing) were conducted for the PBA08 RI. However, water quality parameters were recorded using water quality meters (Hanna Instrument Models 9828 and 98703) that were calibrated daily. Additionally, field screening for organic vapors was not used to guide sampling or analytical efforts. Organic vapors were monitored in the breathing zone during drilling for health and safety purposes at each subsurface soil boring location.

### **I.4.4 Laboratory Analyses**

Samples collected during the PBA08 RI were analyzed by TestAmerica Laboratories, Inc. (TestAmerica) of North Canton, Ohio, and West Sacramento, California, as a subcontractor to White Water Associates, Inc., of Amasa, Michigan. Collected QA split samples were analyzed by USACE's contracted QA laboratory, RTI Laboratories, Inc., of Livonia, Michigan. TestAmerica and RTI Laboratories, Inc. are accredited by the DoD Environmental Laboratory Accreditation Program.

All analytical procedures were completed in accordance with applicable professional standards, USEPA requirements, government regulations and guidelines, DoD Quality Systems Manual Version 3, USACE Louisville District analytical QA guidelines, and specific project goals and requirements. In addition to these standards, the analytical laboratories were required to strictly adhere to the requirements set forth in the FWSAP and PBA08 SAP so that conditions adverse to data quality would not arise. Project quantitation level goals for analytical methods were listed in the Quality Assurance Project Plan. These levels were achieved or exceeded throughout the analytical process, with the exception of a few pesticide and SVOC soil samples, which were analyzed at diluted levels. These goals and exceptions are further discussed in Appendix C. While some quantitation levels were elevated above FWCUGs, all method detection limits for undetected analytes remained below these levels. Preparation and analyses for chemical parameters were performed according to the methods listed in Table I-7.

Leidos is the custodian of project files and will maintain the contents of the files for this investigation, including all relevant records, reports, logs, field notebooks, photographs, subcontractor reports, correspondence, and sample custody forms. These files will remain in a secure area under the custody of the Leidos project manager until they are transferred to USACE Louisville District and the Army at the end of the PBA08 project.

Analytical data reports from the project laboratory were forwarded to the USACE Louisville District laboratory data validation contractor for validation, review, and QA comparison. White Water Associates, Inc. and TestAmerica will retain all original raw data (hard copy and electronic copy) in a secure area under the custody of the laboratory project manager for a minimum of seven years.

**Table I-7. Summary of PBA08 RI Sample Preparation and Analytical Procedures**

| Parameter           | Soil and Sediment |                | Surface Water |                |
|---------------------|-------------------|----------------|---------------|----------------|
|                     | Preparation       | Analysis       | Preparation   | Analysis       |
| Inorganic chemicals | SW-846 3050B      | SW-846 6020    | SW-846 3005A  | SW-846 6020    |
| Mercury             | --                | SW-846 7471A   | --            | SW-846 7470A   |
| Explosives          | --                | SW-846 8330B   | --            | SW-846 8330B   |
| SVOCs and PAHs      | SW-846 3540C      | SW-846 8270C   | SW-846 3520C  | SW-846 8270C   |
| Propellants:        |                   |                |               |                |
| Nitrocellulose      | --                | 353.2 Modified | --            | 353.2 Modified |
| Nitroguanidine      | SW-846 3550A      | SW-846 8330M   | SW-846 3535   | SW-846 8330M   |
| VOCs                | SW-846 5030B      | SW-846 8260B   | SW-846 5030B  | SW-846 8260B   |
| Pesticides          | SW-846 3540C      | SW-846 8081A   | SW-846 3520C  | SW-846 8081A   |
| PCBs                | SW-846 3540C      | SW-846 8082    | SW-846 3520C  | SW-846 8082    |
| Hexavalent Chromium | SW-846 3060A      | SW-846 7196A   | --            | SW-846 7196A   |

PAH = Polycyclic Aromatic Hydrocarbon.

PCB = Polychlorinated Biphenyl.

PBA08 = Performance-Based Acquisition 2008 Remedial Investigation

SVOC = Semi-volatile Organic Compound.

VOC = Volatile Organic Compound.

-- = Preparation steps included in analytical method.

#### **I.4.5 Data Review, Verification, and Quality Assessment**

Data were produced, reviewed, and reported by the laboratory in accordance with specifications in the PBA08 SAP, USACE Louisville District analytical QA guidelines, and the laboratory's QA manual.

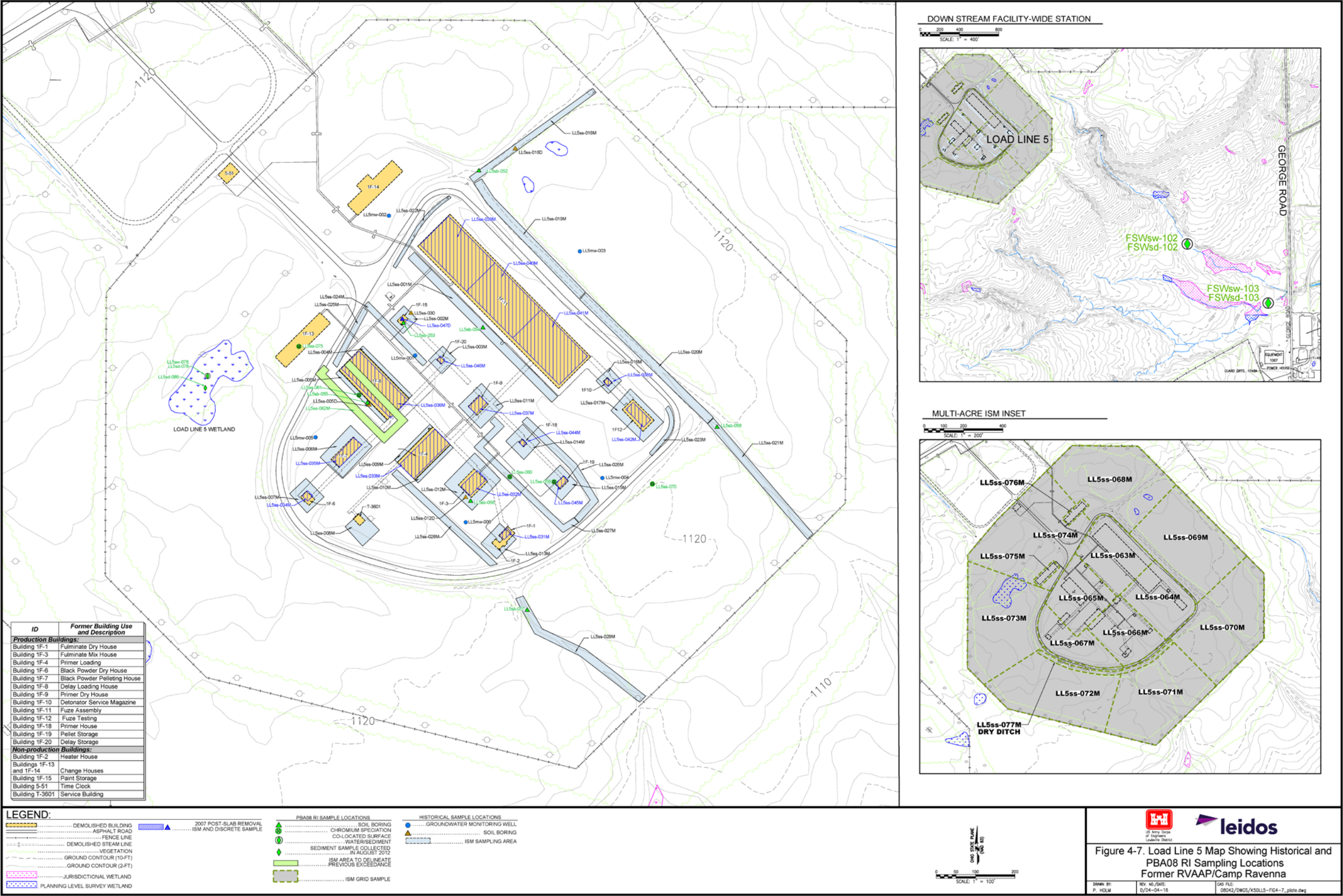
TestAmerica performed in-house analytical data reduction under the direction of the laboratory project manager and QA officer. These individuals were responsible for assessing data quality and informing Leidos and USACE of any data considered "unacceptable" or requiring caution by the data user in terms of its reliability.

Final reports were generated by the laboratory project manager. Data were then delivered to Leidos for verification. TestAmerica prepared and retained full analytical and QC documentation for the project in paper copy and electronic storage media (e.g., compact disk), as directed by the analytical methodologies employed. Laboratory reports included documentation verifying analytical holding time compliance.

Leidos performed a systematic process utilizing automated data review (ADR) software for data verification to ensure the precision and accuracy of the analytical data were adequate for their intended use. The ADR outlier reports are included as Attachment 1 to Appendix C. This verification also attempted to minimize the potential of using false-positive or false-negative results in the decision-making process (i.e., to ensure accurate identification of detected versus non-detected chemicals). This approach was consistent with the DQOs for the project and with the analytical methods used for determining chemicals of concern and calculating risk. "Definitive Data" were reported consistent with the deliverables identified in the project sampling and analysis plan (SAP). These definitive data were then verified through the review process outlined in the project SAP and presented in Appendix C. During the review process, one SVOC acid extractable non-detectable concentration in surface water sample LL5SW-078-5796-SW was rejected due to low laboratory

control sample recovery. In addition, four soil sample results for antimony were rejected due to low matrix spike recovery. Rejected data constituted 0.2% of the Load Line 5 data. Additional results were qualified as estimated, indicating accuracy, precision, or sensitivity was less than desired but adequate for their intended use. The completeness goal for analytical data is 90% as defined in Tables 3-1 and 3-2 of the Facility-wide Quality Assurance Project Plan. The project achieved this goal by collecting all samples presented in the PBA08 SAP and producing usable results for 99.8% of all sample analyses performed. In addition to the Leidos data review, a 10% validation of all data was performed by USACE to evaluate data usability.





**THIS PAGE INTENTIONALLY LEFT BLANK.**

## REFERENCES

---

USACE 2001. *Facility-wide Sampling and Analysis Plan for Environmental Investigations at the Ravenna Army Ammunition Plant, Ravenna, Ohio*. March 2001.

USACE 2005. *RVAAP Facility-Wide Human Health Risk Assessors Manual – Amendment 1*. December 2005.

**THIS PAGE INTENTIONALLY LEFT BLANK.**