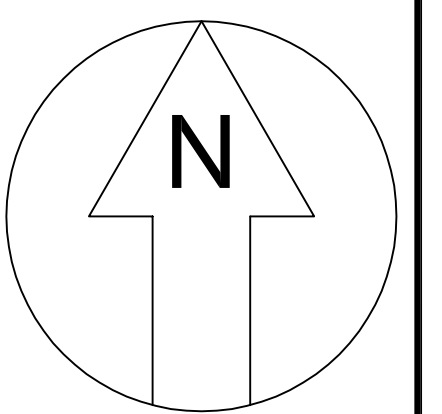
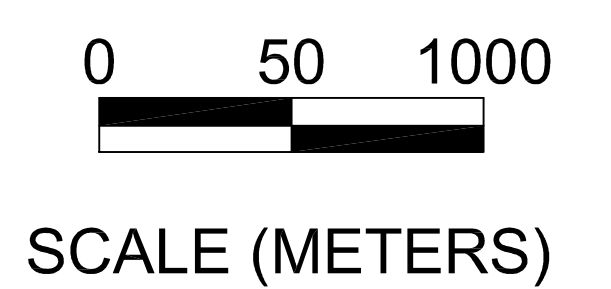


LEGEND

- x UNCONSOLIDATED WELL
- x HOMEWOOD MEMBER WELL
- x SHARON MEMBER WELL
- - - PROPERTY LINE
- HOMEWOOD MEMBER
- + SHARON MEMBER

NOTE: THE UNCONSOLIDATED AQUIFER OVERLAYS THE HOMEWOOD AND SHARON MEMBERS, EXCEPT AS INDICATED ON PLATE 2



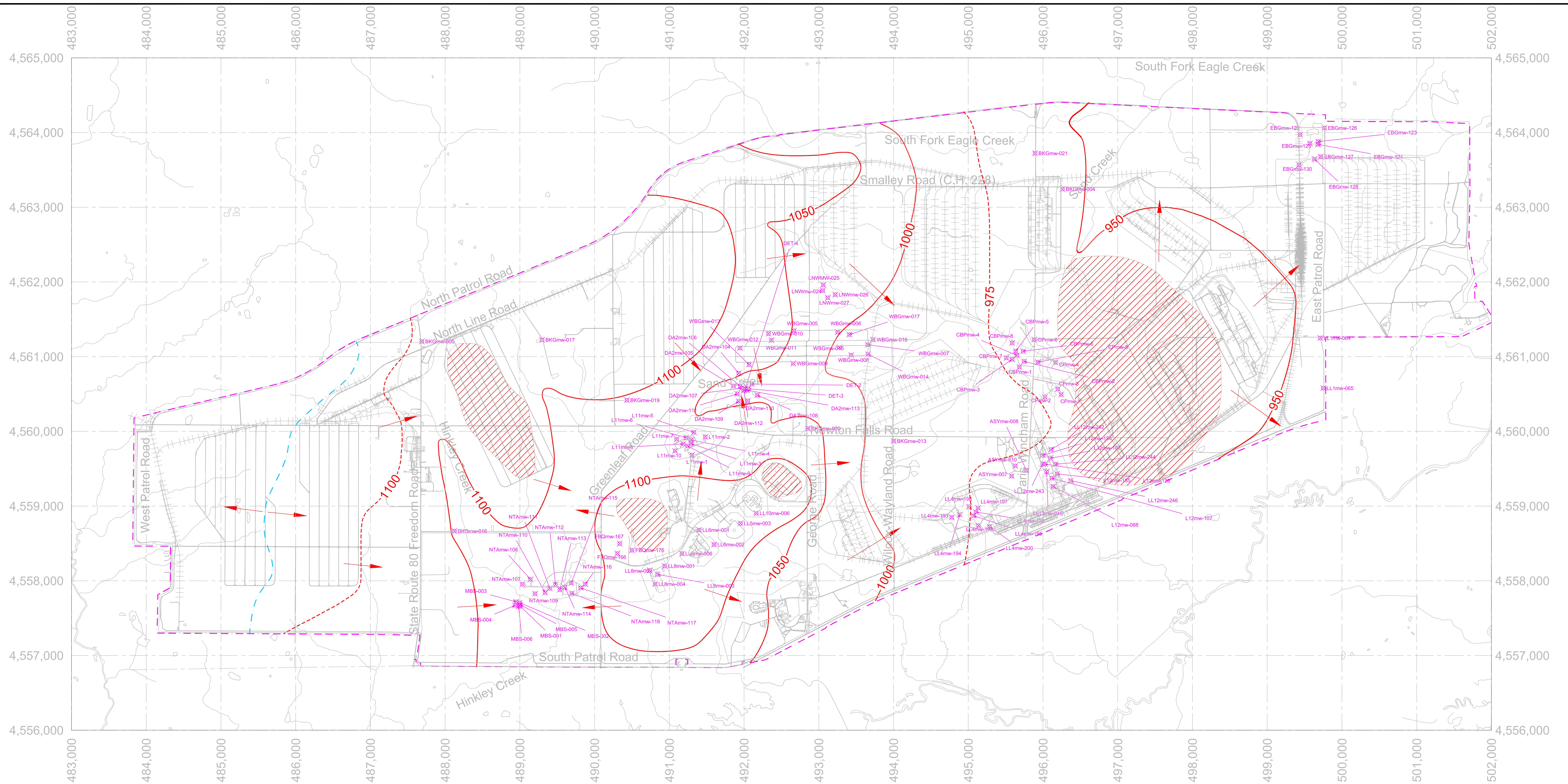
COORDINATE SYSTEM UTM NAD 83 ZONE 17



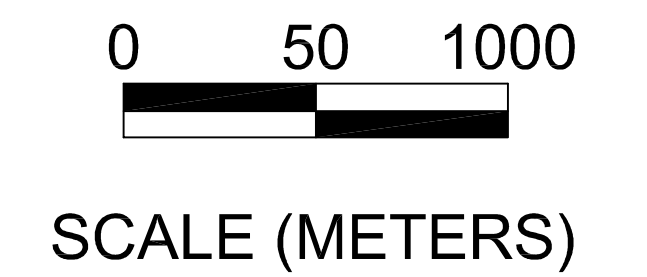
ENVIRONMENTAL QUALITY MANAGEMENT, INC.
1800 CARILLON BLVD.
CINCINNATI, OHIO 45240
P (513)825-7500
F (513)825-7495

MONITORING WELLS AT RVAAP

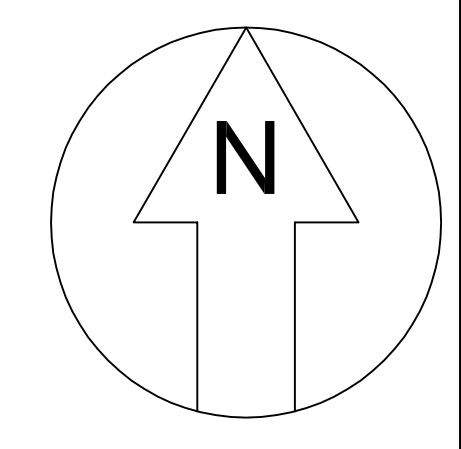
| REV | DESCRIPTION | DATE | APPROVED | SCALE | NONE | ORIGINAL SIZE | PROJECT NO. | DWG NO. | REV. |
|-----------|--------------------------|----------|----------|-------|------|---------------|-------------|---------|------|
| 1 | ADDED NOTE | 12-04-08 | BT | | | 10/22/07 | 030240.0006 | PLATE 1 | 2 |
| 2 | ADDED SFCmw-001 THRU 006 | 9-10-09 | JM | | | | | | |
| REVISIONS | | | | | | | | | |



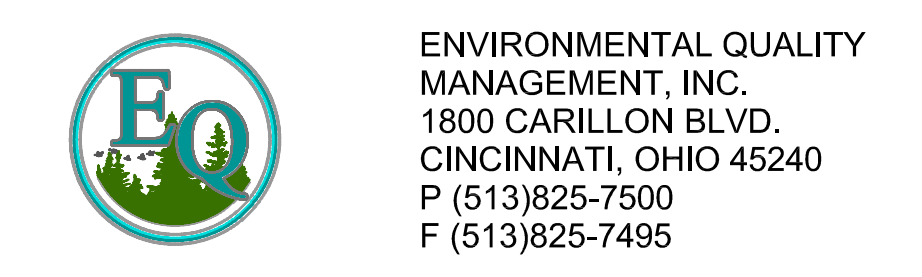
| Well ID | Elevation (ft. amsl) | Well ID | Elevation (ft. amsl) | Well ID | Elevation (ft. amsl) | Well ID | Elevation (ft. amsl) | Well ID | Elevation (ft. amsl) | Well ID | Elevation (ft. amsl) |
|-----------|----------------------|------------|----------------------|------------|----------------------|------------|----------------------|-----------|----------------------|-----------|----------------------|
| BKGmw-004 | 953.35 | LL6mw-006 | 1109.15 | LL12mw-182 | 974.18 | CPmw-001 | 972.32 | EBGmw-125 | 938.44 | NTAmw-116 | 1089.54 |
| BKGmw-005 | 1140.72 | LL8mw-001 | 1110.01 | LL12mw-184 | 970.45 | CPmw-002 | 972.21 | EBGmw-126 | 938.62 | NTAmw-117 | 1081.57 |
| BKGmw-013 | 976.63 | LL8mw-002 | 1106.24 | LL12mw-185 | 973.07 | CPmw-003 | 968.96 | EBGmw-127 | 938.84 | NTAmw-118 | 1072.89 |
| BKGmw-016 | 1095.20 | LL8mw-003 | 1106.36 | LL12mw-187 | 970.42 | CPmw-004 | 970.66 | EBGmw-128 | 938.82 | WBGmw-005 | 1049.11 |
| BKGmw-017 | 1117.78 | LL8mw-004 | 1104.88 | LL12mw-188 | 976.45 | CPmw-005 | 962.15 | EBGmw-129 | 939.02 | WBGmw-006 | 1007.79 |
| BKGmw-019 | 1089.52 | LL10mw-006 | 1111.64 | LL12mw-242 | 972.68 | CPmw-006 | 956.99 | EBGmw-130 | 937.91 | WBGmw-007 | 986.14 |
| BKGmw-020 | 1058.90 | LL11mw-001 | 1091.45 | LL12mw-243 | 971.16 | DETMw-001B | 1042.86 | FBQmw-166 | 1104.15 | WBGmw-008 | 993.72 |
| BKGmw-021 | 955.46 | LL11mw-002 | 1078.41 | LL12mw-244 | 970.54 | DETMw-002 | 1028.66 | FBQmw-167 | 1111.41 | WBGmw-009 | 1033.73 |
| LL1mw-064 | 932.95 | LL11mw-003 | 1087.78 | LL12mw-245 | 971.11 | DETMw-003 | 1027.31 | FBQmw-176 | 1122.38 | WBGmw-010 | 1061.84 |
| LL1mw-065 | 932.47 | LL11mw-004 | 1084.32 | LL12mw-246 | 967.87 | DETMw-004 | 1028.17 | LNWmw-024 | 1025.58 | WBGmw-011 | 1061.68 |
| LL4mw-193 | 976.20 | LL11mw-005 | 1073.00 | ASymw-007 | 968.29 | DA2mw-104 | 1052.27 | LNWmw-025 | 1024.09 | WBGmw-012 | 1054.20 |
| LL4mw-194 | 975.67 | LL11mw-006 | 1083.01 | ASymw-008 | 973.74 | DA2mw-105 | 1042.11 | LNWmw-026 | 1023.93 | WBGmw-013 | 1059.59 |
| LL4mw-195 | 972.23 | LL11mw-007 | 1068.41 | ASymw-010 | 968.08 | DA2mw-106 | 1040.14 | LNWmw-027 | 1020.43 | WBGmw-014 | 980.76 |
| LL4mw-196 | 971.83 | LL11mw-008 | 1084.06 | CBPmw-001 | 961.99 | DA2mw-107 | 1034.75 | NTAmw-107 | 1067.95 | WBGmw-015 | 1000.20 |
| LL4mw-197 | 971.30 | LL11mw-009 | FROZEN | CBPmw-002 | 959.63 | DA2mw-108 | 1026.57 | NTAmw-108 | 1068.16 | WBGmw-016 | 979.74 |
| LL4mw-198 | 975.17 | LL11mw-010 | 1078.95 | CBPmw-003 | 961.98 | DA2mw-109 | 1057.45 | NTAmw-109 | 1072.19 | WBGmw-017 | 998.23 |
| LL4mw-199 | 969.79 | LL12mw-088 | 973.62 | CBPmw-004 | 960.15 | DA2mw-110 | 1055.63 | NTAmw-110 | 1068.64 | MBS-001 | 1064.71 |
| LL4mw-200 | 969.83 | LL12mw-107 | 970.30 | CBPmw-005 | 959.38 | DA2mw-111 | 1037.62 | NTAmw-111 | 1077.67 | MBS-002 | 1065.21 |
| LL5mw-003 | 1108.05 | LL12mw-128 | 968.12 | CBPmw-006 | 959.54 | DA2mw-112 | 1030.16 | NTAmw-112 | 1069.63 | MBS-003 | 1065.60 |
| LL6mw-001 | 1110.65 | LL12mw-153 | 971.62 | CBPmw-007 | 960.08 | DA2mw-113 | 1029.26 | NTAmw-113 | 1068.99 | MBS-004 | 1064.95 |
| LL6mw-002 | 1117.65 | LL12mw-154 | 970.12 | CBPmw-008 | 956.91 | EBGmw-123 | 938.50 | NTAmw-114 | 1072.79 | MBS-005 | 1064.67 |
| | | | | | | EBGmw-124 | 938.41 | NTAmw-115 | 1075.86 | MBS-006 | 1064.63 |



- LEGEND**
- × UNCONSOLIDATED WELL
 - - - PROPERTY LINE
 - 1100 — LINE OF EQUAL GROUNDWATER ELEVATION (ft.amsl)
 - 975 - - - LINE OF EQUAL GROUNDWATER ELEVATION (INTERMEDIATE DASHED)
 - GROUNDWATER DIRECTION
 - UNCONSOLIDATED AQUIFER MISSING
 - - - INFERRED GROUNDWATER DIVIDE



COORDINATE SYSTEM UTM NAD 83 ZONE 14N



POTENTIOMETRIC SURFACE OF UNCONSOLIDATED AQUIFER (JAN. 2009)

| REV | DESCRIPTION | DATE | APPROVED | SCALE | NONE |
|-----------|-------------|------|----------|-------|------|
| | | | | | |
| REVISIONS | | | | | |

| ORIGINAL SIZE | PROJECT NO. | DWG. NO. | REV. |
|---------------|-------------|----------|------|
| E | 030240.0006 | PLATE 2 | 1 |

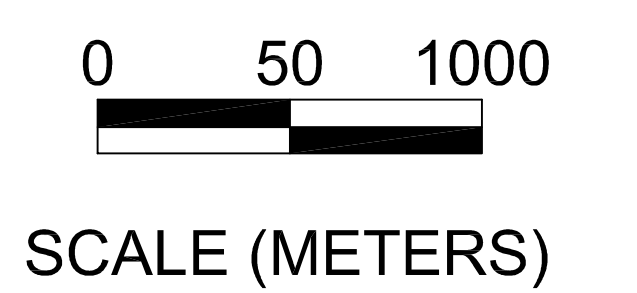


HOMWOOD MEMBER WELLS

| Well ID | Elevation (ft. amsl) | Well ID | Elevation (ft. amsl) |
|-----------|----------------------|------------|----------------------|
| LL5mw-001 | 1107.89 | LL9mw-005 | 1114.83 |
| LL5mw-002 | 1107.83 | LL9mw-006 | 1110.96 |
| LL5mw-004 | 1107.91 | LL9mw-007 | 1110.69 |
| LL5mw-005 | 1107.87 | LL10mw-001 | 1107.67 |
| LL5mw-006 | 1107.58 | LL10mw-002 | 1109.33 |
| LL6mw-003 | 1108.94 | LL10mw-003 | 1109.33 |
| LL6mw-004 | 1108.39 | LL10mw-004 | 1108.97 |
| LL6mw-005 | 1108.61 | LL10mw-005 | 1109.92 |
| LL6mw-007 | 1110.12 | CBLmw-001 | 1136.26 |
| LL7mw-001 | 1109.29 | CBLmw-002 | 1136.09 |
| LL7mw-002 | 1113.93 | CBLmw-003 | 1137.39 |
| LL7mw-003 | 1109.61 | CBLmw-004 | 1137.48 |
| LL7mw-004 | 1111.57 | FBQmw-168 | 1121.76 |
| LL7mw-005 | 1114.23 | FBQmw-169 | 1115.10 |
| LL7mw-006 | 1113.18 | FBQmw-170 | 1122.31 |
| LL8mw-005 | 1101.95 | FBQmw-171 | 1124.35 |
| LL8mw-006 | 1097.47 | FBQmw-172 | 1121.27 |
| LL9mw-001 | 1119.61 | FBQmw-173 | 1120.59 |
| LL9mw-002 | 1116.61 | FBQmw-174 | 1121.59 |
| LL9mw-003 | 1124.33 | FBQmw-175 | 1121.00 |
| LL9mw-004 | 1110.62 | FBQmw-177 | 1115.26 |

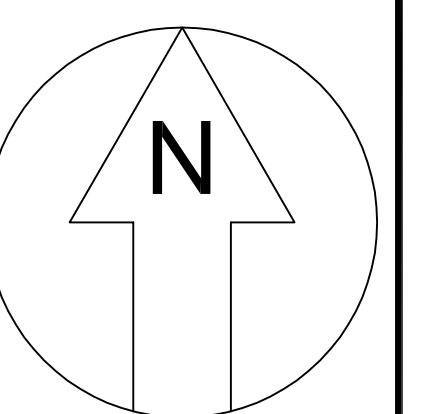
SHARON MEMBER WELLS

| Well ID | Elevation (ft. amsl) | Well ID | Elevation (ft. amsl) | Well ID | Elevation (ft. amsl) | Well ID | Elevation (ft. amsl) |
|-----------|----------------------|-----------|----------------------|-----------|----------------------|-----------|----------------------|
| BKGmw-006 | 1005.87 | LL2mw-265 | 951.42 | ASYmw-005 | 971.52 | SCFmw-001 | 1120.71 |
| BKGmw-008 | 954.09 | LL2mw-266 | 1004.38 | ASYmw-006 | 968.25 | SCFmw-002 | 984.56 |
| BKGmw-010 | 990.76 | LL2mw-267 | 1005.81 | ASYmw-009 | 969.19 | SCFmw-003 | 958.47 |
| BKGmw-012 | 991.57 | LL2mw-268 | 1003.00 | B12mw-010 | 986.77 | SCFmw-004 | 944.17 |
| BKGmw-015 | 991.50 | LL2mw-269 | 994.95 | B12mw-011 | 983.27 | SCFmw-005 | 960.80 |
| BKGmw-018 | 1029.32 | LL2mw-270 | 1002.56 | B12mw-012 | 981.60 | SCFmw-006 | 965.92 |
| LL1mw-063 | 964.95 | LL3mw-232 | 978.28 | RQLmw-006 | 958.55 | | |
| LL1mw-067 | 959.42 | LL3mw-233 | 977.37 | RQLmw-007 | 957.66 | | |
| LL1mw-078 | 961.88 | LL3mw-234 | 996.45 | RQLmw-008 | 958.34 | | |
| LL1mw-079 | 963.98 | LL3mw-235 | 990.72 | RQLmw-009 | 958.49 | | |
| LL1mw-080 | 985.65 | LL3mw-236 | 993.88 | RQLmw-010 | 954.66 | | |
| LL1mw-081 | 967.02 | LL3mw-237 | 990.19 | RQLmw-011 | 952.81 | | |
| LL1mw-082 | 975.10 | LL3mw-238 | 991.39 | RQLmw-012 | 953.71 | | |
| LL1mw-083 | 960.20 | LL3mw-239 | 978.55 | RQLmw-013 | 953.39 | | |
| LL1mw-084 | 969.48 | LL3mw-240 | 978.81 | RQLmw-014 | 951.80 | | |
| LL1mw-085 | 960.67 | LL3mw-241 | 985.00 | RQLmw-015 | 957.43 | | |
| LL2mw-059 | 952.09 | LL3mw-242 | 983.90 | RQLmw-016 | 959.12 | | |
| LL2mw-060 | 951.61 | LL3mw-243 | 978.18 | RQLmw-017 | 959.65 | | |
| LL2mw-261 | 1004.48 | ASYmw-001 | 968.48 | | | | |
| LL2mw-262 | 1003.81 | ASYmw-002 | 968.88 | | | | |
| LL2mw-263 | 1003.32 | ASYmw-003 | 968.61 | | | | |
| LL2mw-264 | 1005.67 | ASYmw-004 | 969.64 | | | | |



LEGEND

- ⊗ **HOMWOOD MEMBER WELL**
- ⊗ **SHARON MEMBER WELL**
- - - **PROPERTY LINE**
- 1100 ——— } **LINE OF EQUAL GROUNDWATER ELEVATION (ft.amsl)**
- 1030 - - - - } **(INTERMEDIATE DASHED)**
- **GROUNDWATER DIRECTION**
- ▭ **HOMWOOD MEMBER**
- ▭ **SHARON MEMBER**



COORDINATE SYSTEM UTM NAD 83 ZONE 14N



ENVIRONMENTAL QUALITY
MANAGEMENT, INC.
1800 CARILLON BLVD.
CINCINNATI, OHIO 45240
P (513)825-7500
F (513)825-7495

| REV | DESCRIPTION | DATE | APPROVED | SCALE | NONE |
|-----|--------------------------|---------|----------|----------|--------------------|
| 1 | ADDED SFCmw-001 THRU 006 | 9-10-09 | JM | DRAWN | D.TOMO 3-30-09 |
| | | | | CHECKED | W.THOMPSON 3-30-09 |
| | | | | APPROVED | |

| ORIGINAL SIZE | PROJECT NO. | DWG. NO. | REV. |
|---------------|-------------|----------|------|
| E | 030240.0006 | PLATE 3 | 1 |

POTENTIOMETRIC SURFACE OF BEDROCK -HOMWOOD AND SHARON (JAN. 2009)