

Final
2018 Annual Land Use Control Monitoring Report,
RVAAP-01 Ramsdell Quarry Landfill,
RVAAP-05 Winklepeck Burning Grounds,
RVAAP-08 through RVAAP-11 (Load Lines 1 through 4), and
RVAAP-12 (Load Line 12)

Camp James A. Garfield Joint Military Training Center
Former Ravenna Army Ammunition Plant
Portage and Trumbull Counties, Ohio

Contract No. W912QR-18-C-0013

Prepared for:



U.S. Army Corps of Engineers
Louisville District

Prepared by:



May 24, 2019

REPORT DOCUMENTATION PAGE					<i>Form Approved OMB No. 0704-0188</i>	
<small>The public reporting burden for this collection of information is estimated to average 1 hour per response, including the time for reviewing instructions, searching existing data sources, gathering and maintaining the data needed, and completing and reviewing the collection of information. Send comments regarding this burden estimate or any other aspect of this collection of information, including suggestions for reducing the burden, to Department of Defense, Washington Headquarters Services, Directorate for Information Operations and Reports (0704-0188), 1215 Jefferson Davis Highway, Suite 1204, Arlington, VA 22202-4302. Respondents should be aware that notwithstanding any other provision of law, no person shall be subject to any penalty for failing to comply with a collection of information if it does not display a currently valid OMB control number.</small>						
PLEASE DO NOT RETURN YOUR FORM TO THE ABOVE ADDRESS.						
1. REPORT DATE (DD-MM-YYYY)		2. REPORT TYPE			3. DATES COVERED (From - To)	
4. TITLE AND SUBTITLE				5a. CONTRACT NUMBER		
				5b. GRANT NUMBER		
				5c. PROGRAM ELEMENT NUMBER		
6. AUTHOR(S)				5d. PROJECT NUMBER		
				5e. TASK NUMBER		
				5f. WORK UNIT NUMBER		
7. PERFORMING ORGANIZATION NAME(S) AND ADDRESS(ES)					8. PERFORMING ORGANIZATION REPORT NUMBER	
9. SPONSORING/MONITORING AGENCY NAME(S) AND ADDRESS(ES)					10. SPONSOR/MONITOR'S ACRONYM(S)	
					11. SPONSOR/MONITOR'S REPORT NUMBER(S)	
12. DISTRIBUTION/AVAILABILITY STATEMENT						
13. SUPPLEMENTARY NOTES						
14. ABSTRACT						
15. SUBJECT TERMS						
16. SECURITY CLASSIFICATION OF:			17. LIMITATION OF ABSTRACT	18. NUMBER OF PAGES	19a. NAME OF RESPONSIBLE PERSON	
a. REPORT	b. ABSTRACT	c. THIS PAGE			19b. TELEPHONE NUMBER (Include area code)	

Final
2018 Annual Land Use Control Monitoring Report,
RVAAP-01 Ramsdell Quarry Landfill,
RVAAP-05 Winklepeck Burning Grounds,
RVAAP-08 through RVAAP-11 (Load Lines 1 through 4), and
RVAAP-12 (Load Line 12)

Camp James A. Garfield Joint Military Training Center
Former Ravenna Army Ammunition Plant
Portage and Trumbull Counties, Ohio

Contract No. W912QR-18-C-0013

Prepared for:



U.S. Army Corps of Engineers
Louisville District

Prepared by:



May 24, 2019



Mike DeWine, Governor
Jon Husted, Lt. Governor
Laurie A. Stevenson, Director

June 7, 2019

RE: US Army Ravenna Ammunition Plt RVAAP
Remediation Response
Project Records
Remedial Response
Portage County
ID # 267000859029

Mr. David Connolly
Army National Guard Directorate
Environmental Programs Division
ARNG-ILE-CR
111 South George Mason Drive
Arlington, VA 22204

Subject: Receipt and Review of the "Final 2018 Annual Land Use Control Monitoring Report, RVAAP-01 Ramsdell Quarry Landfill, RVAAP-05 Winklepeck Burning Grounds, RVAAP-08 – 11 Load Lines 1 – 4, and RVAAP-12 Load Line 12" Dated May 30, 2019

Dear Mr. Connolly:

The Ohio Environmental Protection Agency (Ohio EPA), Northeast District Office (NEDO), Division of Environmental Response and Revitalization (DERR) has received and reviewed the document entitled "Final 2018 Annual Land Use Control Monitoring Report, RVAAP-01 Ramsdell Quarry Landfill, RVAAP-05 Winklepeck Burning Grounds, RVAAP-08 – 11 Load Lines 1 – 4, and RVAAP-12 Load Line 12." This document, received by Ohio EPA's NEDO on May 31, 2019, was prepared for the United States Army Corps of Engineers (USACE) Louisville District, by Chenega Tri-Services, LLC.

Ohio EPA has reviewed this documentation and has found that all previous issues have been addressed. As a result, Ohio EPA concurs with the final findings of the report.

If you have any questions or concerns, please do not hesitate to contact me at (330) 963-1235.

Sincerely,

Nicholas Roope
Site Coordinator
Division of Environmental Response and Revitalization

NCR/sc

cc: David Connolly, ARNG
Kevin Sedlak, ARNG, Camp James A. Garfield
Katie Tait, OHARNG, Camp James A. Garfield
Craig Coombs, USACE Louisville
Nathaniel Peters, USACE Louisville
Rebecca Shreffler, Chenega Tri-Services, LLC
Mark Johnson, Ohio EPA, NEDO, DERR
Bob Princic, Ohio EPA, NEDO, DERR
Tom Schneider, Ohio EPA, SWDO, DERR

RECEIVED
JUN 07 2019

DOCUMENT DISTRIBUTION

For the
Final 2018 Annual Land Use Control Monitoring Report,

Camp James A. Garfield Joint Military Training Center
Former Ravenna Army Ammunition Plant
Portage and Trumbull Counties, Ohio

Name/Organization	Number of Printed Copies	Number of Electronic Copies
David Connolly, ARNG-IED-CR	0	1
Kevin Sedlak, ARNG-IED and Katie Tait, OHARNG – Camp James A. Garfield	Email transmittal letter only	
Nicholas Roope, Ohio EPA Project Manager – NEDO-DERR	1	1
Tom Schneider, Ohio EPA – DERR	Email transmittal letter only	
Bob Princic, Ohio EPA, NEDO-DERR	Email transmittal letter only	
Mark Johnson, Ohio EPA, NEDO-DERR	Email transmittal letter only	
Nathaniel Peters II, USACE – Louisville District	0	1
Craig Coombs, USACE – Louisville District	Email transmittal letter only	
Susan Oliver, Management Solutions, LLC	Email transmittal letter only	
Gail Harris, AR Manager – – Camp James A. Garfield	1	1

AR = Administrative Record

ARNG = Army National Guard

ARNG-IED-CR = Army National Guard – Installation Environmental Division – Cleanup Restoration

DERR = Division of Environmental Response and Revitalization

EPA = Environmental protection Agency

NEDO = Northeast District Office

OHARNG = Ohio Army National Guard

USACE = U.S. Army Corps of Engineers

TABLE OF CONTENTS

SECTION 1.0 INTRODUCTION.....	1
1.1 Report Introduction.....	1
1.2 Facility Location	2
1.3 Facility History	2
1.4 Land Use Controls, Monitoring, And Reporting Requirements	3
1.5 Annual LUC Inspection and Monitoring Report Requirement.....	3
SECTION 2.0 ANNUAL LUC MONITORING REPORT FOR RVAAP-01 RAMSDELL QUARRY LANDFILL	5
2.1 RVAAP-01 Ramsdell Quarry Landfill	5
2.2 LUC Inspection Form for RVAAP-01 Ramsdell Quarry Landfill AOC	6
SECTION 3.0 ANNUAL LUC MONITORING REPORT FOR WINKLEPECK BURNING GROUNDS	9
3.1 Winklepeck Burning Grounds	9
3.2 LUC Inspection Form for RVAAP-05 Winklepeck Burning Grounds AOC	9
SECTION 4.0 ANNUAL MONITORING REPORT FOR LOAD LINES 1, 2, 3 AND 4.....	12
4.1 Load Lines 1, 2, 3, and 4.....	12
4.2 Load Lines 1 – 4 Annual Inspection Form.....	13
SECTION 5.0 ANNUAL LUC MONITORING REPORT FOR LOAD LINE 12	15
5.1 Load Line 12.....	15
5.2 Load Line 12 Annual Inspection Form	15
SECTION 6.0 CONCLUSION.....	19
6.1 General LUC Training	19
6.2 Land Use Consistency and Land Use Control Effectiveness at RQL.....	19
6.3 Land Use Consistency and Land Use Control Effectiveness at WBG.....	19
6.4 Land Use Consistency and Remedy Component Monitoring at Load Lines 1, 2, 3 and 4	19
6.5 Land Use Consistency and Land Use Control Effectiveness at Load Line 12	19
6.6 Land Use Control Deficiency Corrective Action at RQL, WBG, Load Lines 1 through 4 and Load Line 12	20
6.7 Land Use Control and Remedy Component -Effectiveness Certification	20
SECTION 7.0 REFERENCES.....	21

LIST OF APPENDICES

Appendix A	2018 RQL Access Logs
Appendix B	2018 RQL Photographs
Appendix C	2018 WBG Photographs
Appendix D	2018 Load Line 1, 2, 3 and 4 Photographs
Appendix E	2018 Load Line 12 Photographs
Appendix F	2018 Load Line 12 Access Logs
Appendix G	RVAAP-12 Load Line 12 2018 Perimeter Fence Defect Call Outs Identified and Repaired
Appendix H	2018 RVAAP-12 Load Line 12 Land Use Control Index and Call-Out Detail Maps

LIST OF ACRONYMS AND ABBREVIATIONS

AOC	Area of Concern
AR	Army Regulation
ARNG	Army National Guard
bgs	below ground surface
Camp Ravenna	Camp Ravenna Joint Military Training Center
CERCLA	Comprehensive Environmental Response, Compensation, and Liability Act
C.F.R.	Code of Federal Regulations
CJAG	Camp James A. Garfield Joint Military Training Center
DFFOs	Director's Final Findings and Orders
FWSAP	Facility-Wide Sampling and Analysis Plan
FWGWMPP	Facility-Wide Groundwater Monitoring Program Plan
IRP	Installation Restoration Program
LUC	Land Use Control
MK	Mark
MRS	Munitions Response Site
NCP	National Contingency Plan
OAC	Ohio Administrative Code
Ohio EPA	Ohio Environmental Protection Agency
OHARNG	Ohio Army National Guard
PMP	Property Management Plan
RD	Remedial Design
ROD	Record of Decision
RQL	Ramsdell Quarry Landfill
RVAAP	Ravenna Army Ammunition Plant
SOP	Standard Operating Procedure
U.S.C.	United States Code
USP&FO	United States Property and Fiscal Officer
UXO	Unexploded Ordnance
WBG	Winklepeck Burning Grounds

SECTION 1.0 INTRODUCTION

1.1 Report Introduction

As of July 2017, three areas at the former Ravenna Army Ammunition Plant (RVAAP), now known as the Camp James A. Garfield Joint Military Training Center (CJAG) have designated Land Use Controls (LUCs); Ramsdell Quarry Landfill (RQL), Winklepeck Burning Grounds (WBG) and Load Line 12.

The Final Revised Interim Record of Decision (ROD) did not contain any formal LUCs for Load Lines 1, 2, 3 and 4. The Land Use for these areas was designated as National Guard, Mounted Training (No Digging). Until the remedial process is completed at these four Areas of Concern (AOCs), the Ohio Army National Guard (OHARNG) will ensure land use is maintained as Mounted Training – No Digging (tracked and wheeled vehicle use, no digging beyond 4 feet below ground surface (bgs), exposure of 24 hours/day for 39 days/year for 25 years). Annual inspections to confirm that the land use is consistent with the requirements of the Interim ROD are required.

As explained in greater detail in Sections 1.4 and 1.5, annual reports are required for the areas at the former RVAAP that utilize LUCs and remedy components to protect the integrity of an environmental remedy (if present), human health, and the environment by limiting the activities that may occur at those areas.

This report reviewed the following AOCs:

- RVAAP-01 Ramsdell Quarry Landfill,
- RVAAP-05 Winklepeck Burning Grounds,
- RVAAP-08 through 11 Load Lines 1, 2, 3 and 4, and
- RVAAP-12 - Load Line 12.

A review of LUCs at Load Line 12 and remedy components at Load Lines 1-4 was completed in 2018 and this is the second annual report for those areas. This is the sixth annual LUC report completed for WBG and the fourth annual LUC report for RQL.

This annual report is laid out as follows:

Section 1.0 – General introduction to the facility, and a general description of Land Use Controls, monitoring and annual reporting requirements.

Section 2.0 – Annual LUC Monitoring Report for RQL.

Section 3.0 – Annual LUC Monitoring Report for WBG.

Section 4.0 - Annual Monitoring Report for Load Lines 1 – 4

Section 5.0 – Annual LUC Monitoring Report for Load Line 12

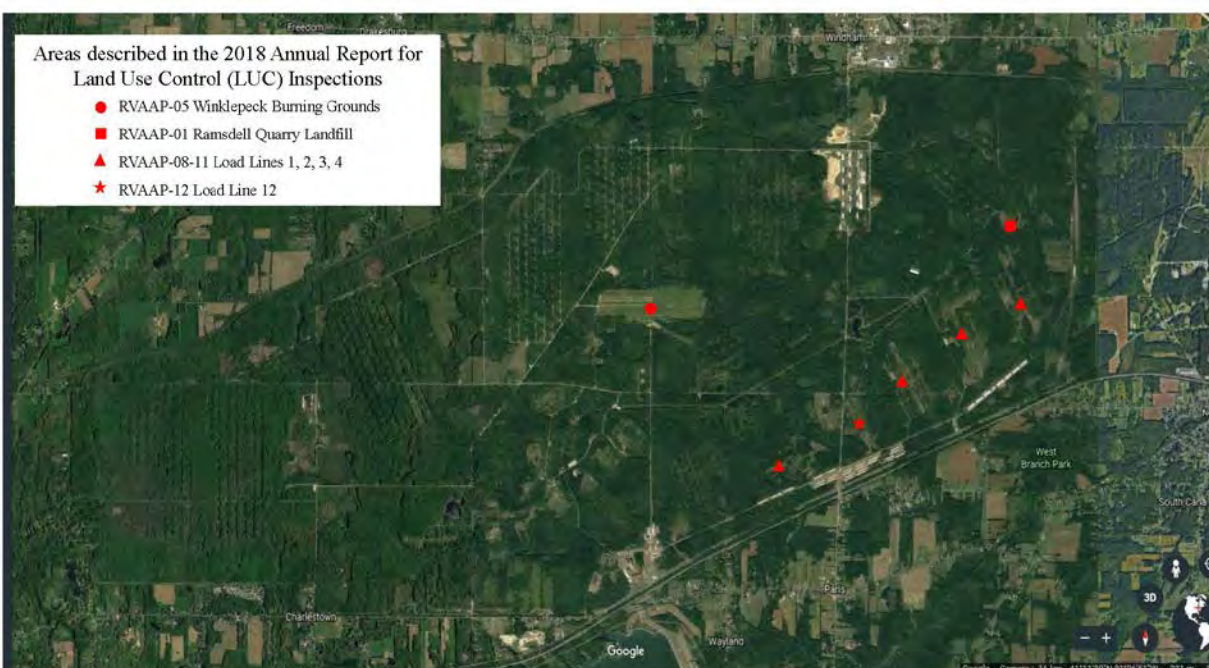
Section 6.0 – Conclusions

Section 7.0 – References

1.2 Facility Location

Camp James A. Garfield is located in northeastern Ohio within Portage and Trumbull counties, and is approximately three miles east/northeast of the City of Ravenna and one mile north/northwest of the City of Newton Falls. The facility is approximately 11 miles long and 3.5 miles wide. The facility is bounded by State Route 5, the Michael J. Kirwan Reservoir, and the CSX System Railroad to the south; Garret, McCormick, and Berry Roads to the west; the Norfolk Southern Railroad to the north; and State Route 534 to the east, as shown in Figure 1. In addition, the facility is surrounded by the communities of Windham, Garrettsville, Charlestown, and Wayland.

Figure 1.0 Map of Camp James A. Garfield Joint Military Training Center
(Former Ravenna Army Ammunition Plant)



1.3 Facility History

RVAAP was a load, assemble, and pack facility built to produce large-caliber artillery projectiles and bombs. Although RVAAP downsized after World War II, plant production lines were reactivated during the Korean and Vietnam Wars. Additionally, the plant conducted nearly continuous demilitarization of war stocks, refurbishment of inventoried ammunition, and minor research and development projects. By 1992, the installation's status changed from "inactive but maintained" to that of "caretaker."

The Department of Defense established the Installation Restoration Program (IRP) to provide guidance and funding for the investigation and cleanup of potential contamination and past operations caused by historical activities at military installations. The IRP began at RVAAP in 1989. Administrative accountability for the initial acreage of the facility was transferred to the

United States Property and Fiscal Officer (USP&FO) for Ohio in May 1999 with subsequent transfers to follow. To date, administrative accountability for the entire 21,683-acre facility has been transferred to the USP&FO for Ohio and subsequently licensed to OHARNG for use as a military training site, now known as Camp James A. Garfield. The RVAAP restoration program involves cleanup of former production/operational areas throughout the facility related to former activities conducted under the RVAAP. The restoration program is currently managed by the Army National Guard (ARNG) with support from the OHARNG. The facility was renamed from Camp Ravenna to Camp James A. Garfield in October 2018. Camp James A. Garfield/former RVAAP may be used interchangeably throughout this report.

1.4 Land Use Controls, Monitoring, And Reporting Requirements

All work, plans, and documentation for the RVAAP Restoration Program must be in conformance with the Comprehensive Environmental Response, Compensation, and Liability Act (CERCLA) [42 United States Code (U.S.C.) §9601, *et seq.*], the National Contingency Plan (NCP) [40 Code of Federal Regulations (C.F.R.) Part 300], and the Director's Final Findings and Orders (DFFOs) [June 10, 2004]. If residual contamination is left in place after the CERCLA remediation process is complete and the contamination still poses a potential for unacceptable risks or exceeds cleanup standards, then the Areas of Concern/Munitions Response Sites (AOCs/MRSs) will require LUCs.

LUCs include any physical, legal, or administrative mechanism that places restrictions on the use of, or limits access to, real property to prevent exposure to contaminants at concentrations greater than permissible levels or other safety issues. The intent of using these controls is to protect the integrity of the remedy (if present), human health, and the environment by limiting the activities that may occur at an AOC/MRS. When implemented, these LUCs provide protection to individuals using or working at the AOC/MRS by limiting and/or preventing activities which could potentially result in risks to those individuals. The Army is responsible for controlling land use on active installations such as Camp James A. Garfield and can internally restrict the use of such property. LUCs may include engineering controls such as fences, Seibert markers and signs, or administrative controls such as awareness training and restrictions on use including type of use and duration.

The Property Management Plan (PMP, dated March 30, 2018 and in effect during 2018) identifies LUCs and restrictions for specific AOCs/MRSs at Camp James A. Garfield and provides mechanisms to implement and manage those LUCs. The PMP is required under Army Regulation (AR) 210-20 and satisfies requirements of the DFFOs. The PMP lists general performance objectives of LUCs at Camp James A. Garfield as well as AOC/MRS specific LUCs detailed to address the concerns present on that particular AOC/MRS. According to Section 1.3 of the 2018 PMP, it is the responsibility of the Army to implement, inspect, maintain and enforce LUCs set forth under the RVAAP Restoration Program.

1.5 Annual LUC Inspection and Monitoring Report Requirement

The PMP requires that the Army conduct an annual inspection of the LUCs to confirm that the LUCs remain effective and still meet the LUC objectives, and also requires that the results of the

annual LUC inspection be included in an Annual LUC Monitoring Report to be submitted to the Ohio Environmental Protection Agency (EPA) for review and approval. The Annual LUC Monitoring Report is required to evaluate the status and effectiveness of LUCs with a description of how LUC deficiencies, including inconsistent land uses, were addressed. The Annual LUC Monitoring Reports will be used in the preparation of the CERCLA 121(c) Five-Year Review. This report presents the LUC monitoring activities that occurred in 2018 for RQL, WBG, and Load Line 12, as well as the monitoring of the remedy components at Load Lines 1, 2, 3 and 4.

Additionally, the PMP requires that a written certification will be submitted with the Annual Monitoring Report that states whether or not the LUCs remain in place and are effective. The written certifications for the sites listed above are presented in Section 6.7.

SECTION 2.0 ANNUAL LUC MONITORING REPORT FOR RVAAP-01 RAMSDELL QUARRY LANDFILL

2.1 RVAAP-01 Ramsdell Quarry Landfill

In accordance with the Camp Ravenna/former RVAAP PMP (dated March 2018) and Appendix A-1 and the Final Remedial Design for Soil and Dry Sediment at RVAAP-01 Ramsdell Quarry Landfill (RQL), a LUC inspection of RQL was conducted by Allan Brillinger (Chenega Tri-Services, LLC) on behalf of the RVAAP restoration program on November 7, 2018. This annual report covers the period of January 2018 through December 2018.

According to LUCs set forth in the *Final Remedial Design for Soil and Dry Sediment at the RVAAP-01 Ramsdell Quarry Landfill*, dated 9 April 2014, and memorialized in the PMP, periodic monitoring of LUCs, in the form of site inspections, is required to be conducted by the Army to confirm that the LUCs remain effective and still meet LUC objectives for continued remedy protectiveness. Site inspections are required to be conducted on an annual basis and inspections of the solid waste landfill are conducted in accordance with State of Ohio solid waste regulations and the Ohio Environmental Protection Agency (Ohio EPA) Director's Final Findings and Orders (Ohio EPA 2004). Additional LUC inspections may be conducted when landfill inspections are conducted as needed. The required Annual LUC Report is to be submitted to the Ohio EPA for review and approval.

The inspections shall include the following:

- Review of LUC training/inbriefs/maintenance and access logs and other documentation as applicable to RQL.
- Evaluation of activities at RQL to ensure that all activities executed within RQL are in compliance with the established digging restrictions and established exposure limits (Security Guard/Maintenance Worker - one (1) hour/day for 250 days/year for 25 years).
 - All digging or excavation within the quarry bottom is prohibited due to residual asbestos and contamination.
 - Digging and excavation on the landfill cap will be regulated by the post closure care plan and the Ohio solid waste regulations.
 - Due to not meeting the industrial/commercial standard, exposure monitoring for the full-time facility employee must be conducted to ensure and document that exposure at the AOC is not above the established exposure limit set for the Security Guard/Maintenance worker of one (1) hour/day for 250 days/year for 25 years.
- Inspection of warning signs on gates and fencing.
- Inspection of RQL fencing and gates.

LUC deficiencies or inconsistent land uses that are identified must be reported and identified on the inspection form/report and must also be reported to the ARNG/ OHARNG.

2.2 LUC Inspection Form for RVAAP-01 Ramsdell Quarry Landfill AOC

Review of LUCs – Management/Corrective Action

Activities and Land Use:

- a) This AOC is to be managed as Restricted Access and is restricted from residential land use. Has residential use occurred? Have other land uses or land use changes occurred?*

No residential land use has occurred at the RQL. There have been no other land uses or land use changes over the past year.

- b) What activities have occurred at RQL since last Inspection? Has any maintenance been performed at the AOC?*

Minor soil depressions and animal burrows within the AOC both on and off the landfill cap were filled with clean soil and seeded in October and November 2018. The 5-wire tensile fence surrounding the LUC area was repaired in December 2018. Repair activities were conducted in accordance with solid waste regulations. Annual mowing was conducted for the RQL in September 2018.

Groundwater monitoring activities were conducted at the RQL in June and October 2018.

- c) Are activities at RQL being conducted in compliance with established digging restrictions and established exposure limits (exposure for full-time employees who access RQL must be tracked)?*

The activities taking place at RQL are being conducted in accordance with the established digging restrictions. No digging has been conducted, only repair activities (soil fill) to repair any animal burrows or soil depressions on the landfill cap. Personnel exposure is being tracked with Log In sheets that any person entering and exiting the AOC must fill out. The completed Access Log sheets for January 2018 through December 2018 are presented in Appendix A.

- d) Are the warning signs in place and functional? Please note condition and any deficiencies.*

The warning signs are posted on the RQL LUC fence and gate as required. Signs that read “DANGER – Unauthorized Personnel Keep Out” and “Danger – Asbestos Waste Disposal Site – Do Not Create Dust – Breathing Asbestos is Hazardous to Your Health” are posted on the gates and the LUC fence every 300 feet. The warning signs are intact and in good condition.

- e) Is the RQL fencing and gates intact and in good condition? Please note condition and any deficiencies.*

The RQL fencing and gate are intact and in good condition. There are no deficiencies with the fence and gates.

Inspections and Reporting

Inspections are required on an annual basis. Periodic monitoring inspections may be conducted as needed. Are annual inspections being conducted as required? Have any additional inspections been completed?

The annual LUC inspection was conducted on November 7, 2018. Other inspections in 2018 included quarterly landfill inspections conducted by Chenega Tri-Services, LLC and /or OHARNG as required by the State of Ohio solid waste regulations. Photographs of the RQL LUC area taken during 2018 are presented in Appendix B.

An Annual Report is required. Has the annual report been completed and submitted to the Ohio EPA?

Annual LUC Monitoring Reports for RQL were completed in 2015, 2016 and 2017. This is the fourth Annual Report being completed for RQL.

Training/Inbriefs (as applicable to RQL):

Are RQL LUC training and/or inbriefs (for those who need to access RQL) being conducted as applicable? Describe the training (content/who attended/who provided/documentation of training).

LUC training is provided annually to all Camp James A. Garfield staff and tenant units and was conducted on April 10 and October 22, 2018. The LUC training is typically provided by Katie Tait and/or Tim Morgan, Camp James A. Garfield-Environmental. The training provides an overview of the history of the facility, the ongoing cleanup work, the location of the cleanup sites, any land use controls/restrictions on AOCs/Munitions Response Sites (MRS), and specific LUC and other restrictions for RQL, as well as other areas at Camp James A. Garfield. Training materials and rosters are on file in the Camp James A. Garfield Environmental Office. Training was conducted for additional Camp James A. Garfield staff that missed the training dates as needed.

A "Land Use Control (LUC) Brief for Contractors/Personnel" was conducted for all personnel/contractors that entered the RQL AOC. The brief consisted of a review of the RQL site history, the environmental hazards present at the RQL, the LUCs that have been instituted, and the requirements of all personnel that enter the AOC. All personnel that have received the brief sign the briefing form that states that they have been briefed and understand the RQL LUC requirements, and that they will comply with all requirements. The briefing was provided for three contractors in 2018. The signed briefing forms are kept on file at the Camp James A. Garfield Environmental office.

If training was not provided, explain why and what corrective actions were initiated.

Not applicable.

Is access to RQL for full-time employees of the facility being logged in order to track exposure? Please review access logs to ensure exposure is within the established exposure limits.

Access to anyone entering the RQL is being tracked with the Access Log. The established exposure limits are one (1) hour/day for 250 days/year for 25 years. The most any one worker was working inside the RQL area in 2018 based on the log-in sheets was 14.75 hours for a Maintenance Worker. The Maintenance Worker that had the 14.75 hours within the LUC area spent 7.75 hours conducting soil and fence repairs and 7.0 hours mowing. Therefore, exposure is within the established exposure limits.

LUC Violations (if any):

Description of any observed/noted LUC violation(s) as identified. Not applicable.

Date of Notification of LUC violations (if applicable) to ARNG/OHARNG: Not applicable.

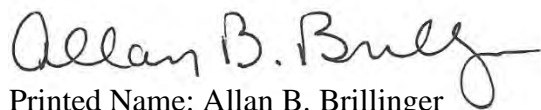
Description of any corrective actions taken to remedy observed LUC violations or recommended corrective actions: Not applicable.

Additional Notes/Comments:

One strand of the 5-wire tensile fence surrounding the LUC area was broken at the northwest corner fence post. The Army and Ohio Army National Guard were notified of the wire break by email on November 7, 2018. The wire break was repaired on December 3, 2018.

Original Inspection Completed by:

Signature:



Printed Name: Allan B. Brillinger

Title: Program Manager

Organization: Chenega Tri-Services, LLC

Date: December 31, 2018

SECTION 3.0 ANNUAL LUC MONITORING REPORT FOR WINKLEPECK BURNING GROUNDS

3.1 Winklepeck Burning Grounds

In accordance with the Camp Ravenna/former RVAAP Property Management Plan (PMP) dated March 2018 and Appendix A.1, an inspection of RVAAP-05 Winklepeck Burning Grounds was conducted by Allan Brillinger (Chenega Tri-Services, LLC) on behalf of the RVAAP restoration program on November 8, 2018. This annual report covers the period of January 2018 through December 2018.

The annual inspection required by the PMP includes the following:

- Review of LUC training and documentation applicable to WBG.
- Evaluation of activities at WBG to ensure that residential use and groundwater use are not occurring.

3.2 LUC Inspection Form for RVAAP-05 Winklepeck Burning Grounds AOC

Review of LUCs – Management/Corrective Action

1. Activities and Land Use:

a) *This AOC is restricted from residential land use. Has residential land use occurred?*

No residential land use has occurred at the WBG. The AOC is used for military training. There have been no other land uses or land use changes over the past year.

b) *Groundwater use or extraction of groundwater located at or underlying the WBG AOC or any portion thereof is prohibited, except for the following:*

- *The installation, development, purging and sampling of new or existing monitoring wells in accordance with the most recent facility-Wide Sampling and Analysis Plan (FWSAP) as part of the AOC-specific IRP, the Facility-Wide Ground Water Monitoring Program Plan (FGWMPP), or the Facility-Wide Groundwater Remedial Investigation.*
- *The modification of existing wells, if necessary, to allow for construction on the range.*
- *The abandonment and replacement of monitoring wells damaged by activities or removed for construction, and abandonment of wells no longer utilized as part of IRP or FGWMPP activities, in accordance with Ohio EPA guidance, the most recent FWSAP, and applicable Ohio Administrative Code requirements.*

Have any groundwater activities been conducted and, if yes, are they within the established control parameters?

Semi-annual groundwater monitoring activities were conducted at the WBG in June and October 2018. The groundwater sampling was conducted in accordance with the FGWMPP, and within the LUCs established for WBG.

2. Inspections and Reporting

- a) Inspections are required on an annual basis. Are annual inspections being completed?*

The annual LUC inspection was conducted on November 8, 2018. Photographs of the WBG LUC area taken during 2018 are presented in Appendix C.

- b) An Annual Report is required. Has the annual report been completed and submitted?*

The Final 2017 Annual LUC Monitoring Report for WBG was submitted to the Ohio EPA on February 28, 2019. The 2017 Annual LUC report was submitted in 2019 instead of 2018 due to environmental program funding and contracting issues.

3. Training (as applicable to RQL):

- a) Was LUC training (specific to WBG) being conducted as applicable? Describe the training (content/who attended/who provided/documentation of training).*

LUC training is provided annually to all Camp James A. Garfield staff and tenant units and was conducted on April 10 and October 22, 2018. The LUC training is typically provided by Katie Tait and/or Tim Morgan, Camp James A. Garfield-Environmental. The training provides an overview of the history of the facility, the ongoing cleanup work, the location of the cleanup sites, any land use controls/restrictions on AOCs/Munitions Response Sites (MRS), and specific LUC and other restrictions for RQL, as well as other areas at Camp James A. Garfield. Training materials and rosters are on file in the Camp James A. Garfield Environmental Office. Training was conducted for additional Camp James A. Garfield staff that missed the training dates as needed.

- b) If training was not provided, explain why and what corrective actions were initiated.*

Not applicable.

4. Description of any observed/noted LUC violation(s):

No LUC violations were noted during the reporting period (January 2018 through December 2018).

5. Date of Notification of LUC violations (if applicable) to ARNG/OHARNG:

Not applicable.

6. Description of any corrective actions taken to remedy observed LUC violations or recommended corrective actions:

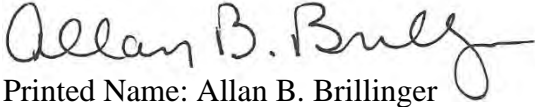
Not applicable.

7. Additional Notes/Comments:

None.

Original Inspection Completed by:

Signature:

A handwritten signature in black ink, appearing to read "Allan B. Brillinger". The signature is fluid and cursive, with the first name "Allan" being the most prominent.

Printed Name: Allan B. Brillinger

Title: Program Manager

Organization: Chenega Tri-Services, LLC

Date: November 8, 2018

SECTION 4.0 ANNUAL MONITORING REPORT FOR LOAD LINES 1, 2, 3 AND 4

4.1 Load Lines 1, 2, 3, and 4

According to the *Final Interim Record of Decisions (ROD) for the Remediation of Soils at Load Lines 1 through 4 at the Ravenna Army Ammunition Plant*, dated January 2007, the selected remedy included soil excavation and the following components:

- Groundwater monitoring to ensure the remedy did not impact groundwater;
- Maintenance of building slabs and foundations; and
- Five year reviews in accordance with CERCLA 121(c) and 300.430(f)(4)(ii).

The 2007 Interim ROD further indicated that “for the selected remedy, groundwater monitoring will be performed for five years at select existing wells in LLs 1-4 to monitor for potential impacts to groundwater from remedy implementation. Groundwater monitoring data will supplement data from the Facility-Wide Groundwater Monitoring Program. Groundwater samples will be collected semi-annually for the first two years after remedy implementation. The sampling frequency thereafter will be based on the laboratory results. Groundwater samples will be submitted to an environmental chemistry laboratory for analysis of the full suite of constituents (i.e., VOCs, SVOCs, PCBs, pesticides, explosives, propellants and TAL metals). Findings will be evaluated in the context of the facility-wide groundwater monitoring program and any action will be determined by the Army, with approval by Ohio EPA. In addition, the concrete slabs and building foundations that remain in place after remediation will be inspected periodically to ensure their integrity has not been compromised allowing infiltration to potentially contaminated soils underneath. The remedial action will be subjected to five-year reviews as part of the CERCLA process to assure that human health and the environment are being protected.” According to the Interim ROD, the intended future use of the AOCs is Mounted Training – No Digging.

Based on the 2007 Interim ROD, the U.S. Army will conduct the following to ensure the components of the selected remedy are met:

- Ensure that groundwater monitoring was conducted for five years after the remedial action was completed in 2007/2008;
- Ensure that building slabs and foundations were maintained and inspected periodically if in place;
- Ensure land use is maintained as Mounted Training – No Digging (tracked and wheeled vehicle use, no digging beyond 4 feet bgs, exposure of 24 hours/day for 39 days/year for 25 years); and
- Conduct five-year reviews as necessary.

The Inspection Form for Load Lines 1, 2, 3 and 4 was assembled in October 2017, and was included as part of the Final PMP in March 2018.

4.2 Load Lines 1 – 4 Annual Inspection Form

Former RVAAP Inspection Form for RVAAP-08 Load Line 1, RVAAP-09 Load Line 2, RVAAP-10 Load Line 3, and RVAAP-11 Load Line 4 Areas of Concern (AOC)

In accordance with the Camp Ravenna/former RVAAP PMP (dated March 30, 2018), an annual inspection of RVAAP-08, 09, 10, and 11 Load Lines 1, 2, 3 and 4 was conducted by Allan Brillinger (Chenega Tri-Services, LLC) on behalf of the RVAAP restoration program on November 13 and 14, 2018.

Inspection Form for Load Lines 1, 2, 3 and 4

1. Activities and Land Use:

- a. This AOC is to be managed as Mounted Training – No Digging. What activities have occurred at LL1 – 4 within the last year? Are the activities within the established use for the AOCs?*

The only activities at LL1 – 4 in 2018 were groundwater monitoring well sampling and mowing of access roads. The sites have not been used for training. Photographs of the LL 1 - 4 LUC areas taken during 2018 are presented in Appendix D.

- b. Are the activities being conducted at LL1 – 4 in compliance with established digging restrictions and exposure parameters?*

No digging was observed or reported to have taken place at the AOCs in 2018.

2. Inspections and Reporting:

- a. Has a 5-Year Review been completed for this AOC as required?*

Two 5-Year Reviews have been completed for these AOCs. The first 5-Year Review was completed in August 2012 and the second 5-Year Review was completed in June 2017.

3. Groundwater Monitoring:

- a. Was groundwater monitoring conducted for 5 years after the remedial action in accordance with the Interim ROD?*

Groundwater monitoring has been performed at least annually at the AOCs since 2005 as part of a facility-wide groundwater monitoring program.

4. Concrete Slabs and Building Foundations:

- a. Were the concrete slabs and building foundations inspected periodically to ensure their integrity has not been compromised allowing infiltration to potentially contaminated soils underneath?*

Not Applicable. Slabs and building foundations have been removed.

Additional Notes/Comments

None.

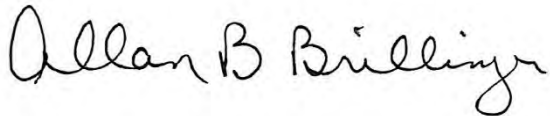
Inspection Completed by:

Date: November 14, 2018

Name/Title: Allan B. Brillinger, Program Manager

Organization: Chenega Tri-Services, LLC

Signature:

A handwritten signature in black ink that reads "Allan B Brillinger". The signature is written in a cursive, flowing style.

SECTION 5.0 ANNUAL LUC MONITORING REPORT FOR LOAD LINE 12

5.1 Load Line 12

According to LUCs set forth in the *Final Remedial Design for the RVAAP-12 Load Line 12*, dated 1 October 2009, and memorialized in the PMP, periodic monitoring of LUCs, in the form of site inspections, is required to be conducted by the Army to confirm that the LUCs remain effective and still meet LUC objectives for continued remedy protectiveness. Site inspections are required to be conducted as necessary but not less than once per year. The required Annual LUC Report is to be submitted to the Ohio EPA for review and approval.

Based on the 2009 Remedial Design document, the U.S. Army will implement LUCs to achieve the performance objectives listed below for LL12:

- Maintain the Camp James A. Garfield perimeter fence – Land use of LL12 shall be limited by the maintenance of the existing Camp James A. Garfield perimeter fence which shall be of 6-foot, chain-link fence topped with v-shaped bracket slanting inward and outward with a three-strand barbed wire bracket.
- Restrict future land use to National Guard mounted training – Land use shall be limited to use of LL12 for National Guard mounted training operations. Activities at LL12 shall be limited to the following: tracked and wheeled vehicle operations and associated training activities along with training area development and maintenance, maintaining the integrity of monitoring wells, road and culvert repair, routine ditch maintenance, vegetation management, and compatible natural resources management activities;
- Maintain a LUC training program;
- Limit activities to tracked and wheeled operations that are consistent with the National Guard mounted training scenario and other essential security, safety, and natural resources management activities (National Guard Trainee – Mounted Training - 24 hours/day for 39 days/year for 25 years); and
- Prohibit digging beyond four (4) feet below ground surface (bgs) except for routine maintenance of roads, ditches and culverts, and ground surface repairs resulting from maneuver damage.

Therefore, the annual LUC inspection shall include the following (at a minimum):

- Inspection of the Camp James A. Garfield perimeter fence;
- Review of activities at LL12 including exposure timeframes, signage/markers, types of activities performed, and any disturbance/digging activities;
- Review of LUC training program as applicable to LL12;

LUC deficiencies or inconsistent land uses that are identified must be reported and identified on the inspection form/report and must also be reported to the ARNG/OHARNG.

5.2 Load Line 12 Annual Inspection Form

In accordance with the Camp Ravenna/former RVAAP PMP (dated March 30, 2018), a LUC inspection of RVAAP-12 Load Line 12 was conducted by Allan Brillinger and Don Trocchio (Chenega Tri-Services, LLC) on behalf of the RVAAP restoration program in November and December 2018.

Review of LUCs – Management/Effectiveness/Corrective Action

1. Activities and Land Use:

- a. This AOC is to be managed as National Guard Trainee - Mounted Training. What activities have occurred at LL12 within the last year? Are the activities within the established limitations of use for the AOC?*

The only activities at LL12 in 2018 were groundwater monitoring well sampling and mowing of access roads. The site has not been used for training. Photographs of the LL12 LUC area taken during 2018 are presented in Appendix E.

The Load Line 12 Access Logs are presented in Appendix F, and show the personnel that accessed the site and the activities they were engaged in.

- b. Are the activities being conducted at LL12 in compliance with established digging restrictions and exposure parameters? How is this being tracked and managed?*

No digging was observed or reported to have taken place at the AOC in 2018.

- c. Are signage/markers in place to identify areas where the LUCs apply? Are they being maintained?*

Although not required for this AOC, appropriate signage is posted at the locked Load Line gates limiting access to authorized personnel only.

- d. Is the Camp James A. Garfield perimeter fence and associated gates being maintained in order to be an effective and protective control and deter trespassers?*

The 6-foot high perimeter fence around the facility was inspected in December 2018. The defects noted during the 2018 annual perimeter fence inspection are summarized in Appendix G, and shown on the maps in Appendix H. Defects are reported to the Army and the facility maintenance staff for repair.

2. Inspections and Reporting:

- a. Inspections are required on an annual basis. Are annual inspections being conducted as required?*

The LUCs for Load Line 12 were inspected in 2017. This is the second annual LUC inspection for Load Line 12 and was conducted in November and December 2018.

- b. An Annual Report is required. Has the annual report been completed and submitted to the Ohio EPA? Did the annual report provide a written certification stating whether or not the LUCs remain in place and effective?*

This is the second annual LUC Inspection report for Load Line 12. It contains written certification (see Section 6) stating that the LUCs are in place and effective.

- c. Are the LUCs for LL12 incorporated into the Property Management Plan (PMP) (i.e., map indicating the location and dimensions of the AOC with the LUC location, environmental overlay and appropriate Ohio EPA notice procedures)?*

The LUCs for Load Line 12 have been incorporated into the PMP dated March 2018.

- d. Has a 5-Year Review been completed for this AOC as required?*

Two 5-Year Reviews have been completed for this AOC. The first 5-Year Review was completed in August 2012 and the second 5-Year Review was completed in June 2017.

3. Training/Inbriefs (as applicable to LL12):

a. Is a LUC training program in place and being conducted as applicable to LL12? Describe the training (content/who attended/who provided/documentation of training).

LUC training is provided annually to all Camp James A. Garfield staff and tenant units and was conducted on April 10 and October 22, 2018. The LUC training is typically provided by Katie Tait and/or Tim Morgan, Camp James A. Garfield-Environmental. The training provides an overview of the history of the facility, the ongoing cleanup work, the location of the cleanup sites, any land use controls/restrictions on AOCs/MRS, and specific LUC and other restrictions for LL-12, as well as other areas at Camp James A. Garfield. Training materials and rosters are on file in the Camp James A. Garfield Environmental Office. Training was conducted for additional Camp James A. Garfield staff that missed the training dates as needed.

A “Land Use Control (LUC) Brief for Contractors/Personnel” was conducted for all personnel/contractors that entered the AOC. The brief consisted of a review of the LL 12 site history, the environmental hazards present at LL 12, the LUC s that have been instituted, and the requirements of all personnel that enter the LUC area. All personnel that have received the brief sign the briefing form that states that they have been briefed and understand the LL 12 LUC requirements, and that they will comply with all requirements. The briefing was provided for two contractors in 2018. The signed briefing forms are kept on file at the Camp James A. Garfield Environmental office.

b. If training was not provided, explain why and what corrective actions were initiated.

Not Applicable.

4. LUC Evaluation and Reporting of Violations (if any):

a. Are LUCs in place and being effectively managed at LL12?

Land Use Controls are in place and being effectively managed at Load Line 12.

b. Were any LUC violations or deficiencies noted?

No LUC Violations or deficiencies were noted on the LL-12 AOC site. Perimeter fence defects and repairs are summarized in the “2018 Camp James A. Garfield Perimeter Fence Callout/Repair Summary Table” (Summary Table located in Appendix G) and shown on the call-out detail maps in Appendix H. Notification dates are summarized in the Summary Table (Appendix G).

All of the perimeter fence defects called out during the 2018 inspection have been repaired as of January 3, 2019, with the exception of SW48 and SE07. SW48 and SE07 are culvert washouts, and the repairs are under contract and are underway as of mid-April 2019.

Photographs of the repairs completed after the 2018 fence inspection will be presented in the 2019 Annual LUC Report.

Additional Notes/Comments:

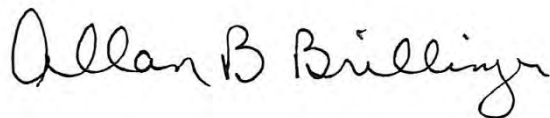
None.

Date: February 11, 2019

Name/Title: Allan B. Brillinger, Program Manager

Organization: Chenega Tri-Services, LLC

Signature:

A handwritten signature in black ink that reads "Allan B Brillinger". The signature is written in a cursive style with a large initial 'A' and 'B'.

SECTION 6.0 CONCLUSION

6.1 General LUC Training

The OHARNG provided training to all Camp James A. Garfield staff and tenant units including an overview of the history of the facility, the ongoing cleanup work, the location of the cleanup sites, and any land use controls/restrictions on AOCs/MRSs. All training requirements presented in the PMP were met by the OHARNG in 2018. Training materials and rosters are on file in the Camp James A. Garfield Environmental Office.

6.2 Land Use Consistency and Land Use Control Effectiveness at RQL

The land use at RQL is Restricted Access. Based on the 2018 inspection, there are no inconsistent uses or activities discovered or reported at RQL. All activities conducted within the RQL AOC were performed in compliance with established digging restrictions, and established exposure limits as described in the PMP. This indicates current LUC objectives are being met to ensure the remedy is effective and protective.

A LUC in-brief was provided to all personnel entering RQL. Additionally, annual LUC training was provided to full-time staff and tenant units at the facility.

Land use is consistent with the designated LUCs and LUCs are effective.

6.3 Land Use Consistency and Land Use Control Effectiveness at WBG

The land use at WBG is Commercial/Industrial use. Based on the 2018 inspection, there were no inconsistent uses or activities discovered or reported at WBG. The AOC is being used for military training. No residential use has occurred at the AOC. No groundwater use is occurring at this AOC. Annual LUC training was provided to full-time staff and tenant units at the facility for WBG and other AOCs.

Land use is consistent with the designated LUCs and LUCs are being implemented and are effective.”

6.4 Land Use Consistency and Remedy Component Monitoring at Load Lines 1, 2, 3 and 4

Load Lines 1, 2, 3 and 4 were remediated for use as Mounted Training - No Digging for the National Guard Trainee. Based on the 2018 inspection, there were no inconsistent uses or activities discovered or reported at these AOCs that were inconsistent with the designated use. Load Lines 1, 2, 3 and 4 were not used for military training in 2018. Land use is consistent with the remedies at the site and monitoring is effective.

6.5 Land Use Consistency and Land Use Control Effectiveness at Load Line 12

Load Line 12 was remediated for use as Mounted Training - No Digging for the National Guard Trainee. Based on the 2018 inspection, there were no inconsistent uses or activities discovered or reported at Load Line 12. The AOC is not currently being used for military training. A LUC in-brief was provided to all personnel entering LL12. Additionally, annual LUC training was provided to full-time staff and tenant units at the facility.

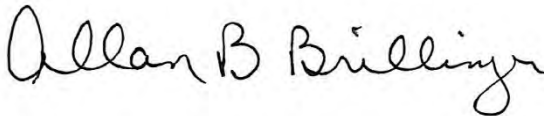
Land use is consistent with the designated LUCs and LUCs are being implemented and are effective.

6.6 Land Use Control Deficiency Corrective Action at RQL, WBG, Load Lines 1 through 4 and Load Line 12

For Load Line 12, the annual perimeter fence inspection was conducted. Minor defects/deficiencies were noted during the inspection. Repairs were completed for most of the defects on 3 January 2019 except for the culvert deficiencies which are beyond the capability of the facility maintenance staff (must be contracted and completed by a construction company). No other deficiencies were identified and therefore no other corrective actions were completed.

6.7 Land Use Control and Remedy Component -Effectiveness Certification

This certifies that to the best of my knowledge and belief all the information contained in this Annual LUC Monitoring Report is accurate, and that the designated Land Use Controls and/or remedy component monitoring at Ramsdell Quarry Landfill, Winklepeck Burning Grounds, Load Lines 1 through 4 and Load Line 12 are in place and remain effective.



(signature)

December 31, 2018

(date)

Allan B. Brillinger
(printed name)

Program Manager, Chenega Tri-Services, LLC
(Title).

SECTION 7.0 REFERENCES

General

Final Property Management Plan for the Designated Areas of Concern and Munitions Response Sites, Volume One – Version 1.0. U.S. Army Corps of Engineers. August 2012.

Ravenna Army Ammunition Plant Restoration Program website: www.rvaap.org

Final Revised Property Management Plan for the Designated Areas of Concern and Munitions Response Sites, Version 2.0, Former Ravenna Army Ammunition Plant, Camp Ravenna Joint Military Training Center, Portage and Trumbull Counties, Ohio, US Army Corps of Engineers. March 30, 2018.

Ramsdell Quarry Landfill

Final Remedial Action Report for Soil and Dry Sediment at the RVAAP-01 Ramsdell Quarry Landfill. Leidos. 30 January 2015.

Final Remedial Design for Soil and Dry Sediment at the RVAAP-01 Ramsdell Quarry Landfill. Leidos. 9 April 2014.

Final Record of Decision Amendment for the RVAAP-01 Ramsdell Quarry Landfill at the Ravenna Army Ammunition Plant, Ravenna, Ohio. SAIC. 24 May 2013.

Revised Final Modified Proposed Plan for Soil and Dry Sediment at RVAAP-01 Ramsdell Quarry Landfill at the Ravenna Army Ammunition Plant, Ravenna, Ohio. SAIC 2012. 6 June 2012.

Revised Final Remedial Design for the RVAAP-01 Ramsdell Quarry Landfill at Ravenna Army Ammunition Plant. SAIC. 17 June 2010.

Winklepeck Burning Grounds

Final Remedial Action Completion Report for the Soil Removal Remedy at RVAAP-05 Winklepeck Burning Grounds. Tetra Tech. February 2018.

Final Remedial Design Supplement Soil Removal Action at RVAAP-05 Winklepeck Burning Grounds. Tetra Tech. 30 June 2016.

Final Remedial Design for the Post-ROD Changes to the Remedy at RVAAP-05 Winklepeck Burning Grounds, Former Ravenna Army Ammunition Plant/Camp Ravenna. USACE. 27 August 2015.

Final Record of Decision for Soil and Dry Sediment at RVAAP- 05 Winklepeck Burning Grounds at Ravenna Army Ammunition Plant. SAIC. Aug 2008.

Proposed Plan for the Winklepeck Burning Grounds, Ravenna Army Ammunition Plant, Ravenna, Ohio. SAIC. Dec 2005.

Load Lines 1, 2, 3 and 4

Final Revised Interim Record of Decision for the Remediation of Soils at RVAAP-08, 09, 10, and 11 Load lines 1 – 4. Shaw Environmental; USACE. 18 January 2007.

Final Proposed Plan for the Remediation of Soils at Load Lines 1 through 4 at the Ravenna Army Ammunition Plant Ravenna, Ohio, July 2005.

Load Line 12

Final Proposed Plan for Wet Sediment and Surface Water at RVAAP 12 Load Line 12. Leidos. 9 November 2017.

Final Remedial Design for RVAAP-12 Load Line 12 at Ravenna Army Ammunition Plant, October 2009.

Final Record of Decision for Soil and Dry Sediment at RVAAP-12 Load Line 12. SAIC Engineering of Ohio. 14 April 2009.

Appendix A

2018 RQL Access Logs

Sign In/Out Sheet for Ramsdell Quarry Landfill – Please sign in and out when entering and exiting the Ramsdell Quarry Landfill.
Please also note what activities were performed and what areas of the AOC were accessed.

Name	Date	Time In	Time Out	Description of Activities Performed (i.e., mowing, gw sampling, etc)	Areas Accessed (please choose and check)
Brad Kline Jack Madved	10 MAR 18	1000	1110	RQL Quarterly Inspection	<input type="checkbox"/> Quarry bottom <input type="checkbox"/> Groundwater monitoring wells <input checked="" type="checkbox"/> Landfill cap
Brad Kline Al Brillinger	11 MAR 18	1045	1130	RQL Quarterly Inspection	<input type="checkbox"/> Quarry bottom <input type="checkbox"/> Groundwater monitoring wells <input checked="" type="checkbox"/> Landfill cap
Jack Madved - Port. Co Al Brillinger - Chenega Brad Kline - OHARNG	8 JUN 18 70	1010	1050	RQL Quarterly Inspection	<input type="checkbox"/> Quarry bottom <input type="checkbox"/> Groundwater monitoring wells <input checked="" type="checkbox"/> Landfill cap
Danyelle Phillips - Cardno Katie Bryant - Hydrogeo Kate Ferguson - Cardno	28 Jun 18	1104	1530	Groundwater sampling	<input type="checkbox"/> Quarry bottom <input checked="" type="checkbox"/> Groundwater monitoring wells <input type="checkbox"/> Landfill cap
CAITLIN JAFOLLY AJA REYES - CARDNO	28 JUN 18	1305	1606	groundwater sampling	<input type="checkbox"/> Quarry bottom <input checked="" type="checkbox"/> Groundwater monitoring wells <input type="checkbox"/> Landfill cap
GARY B Jocob T.	9/5/18	0930	16:10	mowing - VISTA	<input type="checkbox"/> Quarry bottom <input type="checkbox"/> Groundwater monitoring wells <input type="checkbox"/> Landfill cap
Brad Kline OHARNG	9/17/18	9:40	10:20	quarterly inspection	<input type="checkbox"/> Quarry bottom <input type="checkbox"/> Groundwater monitoring wells <input checked="" type="checkbox"/> Landfill cap
Al Brillinger Chenega	9/17/18	9:40	10:20	quarterly inspection	<input type="checkbox"/> Quarry bottom <input type="checkbox"/> Groundwater monitoring wells <input type="checkbox"/> Landfill cap
Brad Kline Jack Madved Al Brillinger	9/25/18	10:40	1115	Quarterly Inspection	<input type="checkbox"/> Quarry bottom <input type="checkbox"/> Groundwater monitoring wells <input checked="" type="checkbox"/> Landfill cap
GARY B J.T.	10-16-18	12:30	3:05	Work & Repair	<input type="checkbox"/> Quarry bottom <input type="checkbox"/> Groundwater monitoring wells <input checked="" type="checkbox"/> Landfill cap

Sign In/Out Sheet for Ramsdell Quarry Landfill – Please sign in and out when entering and exiting the Ramsdell Quarry Landfill.
Please also note what activities were performed and what areas of the AOC were accessed.

Name/Company	Date	Time In	Time Out	Description of Activities Performed (i.e., mowing, gw sampling, etc)	Areas Accessed (please choose and check)
Ryan Laurin Leidos	10/18/18	0925	1345	Groundwater Sampling	<input type="checkbox"/> Quarry bottom <input checked="" type="checkbox"/> Groundwater monitoring wells <input type="checkbox"/> Landfill cap
Gabby Grove Eskey Leidos	10/18/18	0925	1345	Groundwater Sampling	<input type="checkbox"/> Quarry bottom <input checked="" type="checkbox"/> Groundwater monitoring wells <input type="checkbox"/> Landfill cap
Jack Thomas Leidos	10/18/18	0925	1345	Groundwater sampling	<input type="checkbox"/> Quarry bottom <input checked="" type="checkbox"/> Groundwater monitoring wells <input type="checkbox"/> Landfill cap
Gabby Grove Eskey Leidos Ryan Laurin / Leidos	10/19/18	1245	1515	Groundwater sampling	<input type="checkbox"/> Quarry bottom <input checked="" type="checkbox"/> Groundwater monitoring wells <input type="checkbox"/> Landfill cap
Ryan Laurin Romana ZAS Leidos	10/22/18	0820	1405	Groundwater Sample	<input type="checkbox"/> Quarry bottom <input checked="" type="checkbox"/> Groundwater monitoring wells <input type="checkbox"/> Landfill cap
Jack Thomas Leidos	10/22/18	0850	0955 0950	Groundwater Sampling	<input type="checkbox"/> Quarry bottom <input checked="" type="checkbox"/> Groundwater monitoring wells <input type="checkbox"/> Landfill cap
Al Brillinger- Chenega Brad Kline- OHARNG	11/7/18	0905	0950	Pre-quarterly inspection	<input type="checkbox"/> Quarry bottom <input type="checkbox"/> Groundwater monitoring wells <input checked="" type="checkbox"/> Landfill cap
Al Brillinger- Chenega	11/8/18	1005	1130	Quarterly Insp.	<input type="checkbox"/> Quarry bottom <input type="checkbox"/> Groundwater monitoring wells <input checked="" type="checkbox"/> Landfill cap

Sign In/Out Sheet for Ramsdell Quarry Landfill – Please sign in and out when entering and exiting the Ramsdell Quarry Landfill.
Please also note what activities were performed and what areas of the AOC were accessed.

Name	Date	Time In	Time Out	Description of Activities Performed (i.e., mowing, gw sampling, etc)	Areas Accessed (please choose and check)
J. Madved	11-8-18	10:45	11:30	G.W. Inspection	<input type="checkbox"/> Quarry bottom <input type="checkbox"/> Groundwater monitoring wells <input type="checkbox"/> Landfill cap
Mary Helms	11-8-18	10:45	11:30	" "	<input type="checkbox"/> Quarry bottom <input type="checkbox"/> Groundwater monitoring wells <input type="checkbox"/> Landfill cap
Justin Rechech	11/8/18	10:45	11:30	SW Inspection	<input type="checkbox"/> Quarry bottom <input type="checkbox"/> Groundwater monitoring wells <input type="checkbox"/> Landfill cap
Dale Thomas	11/14/18	9:00	10:00	Hole Fill	<input checked="" type="checkbox"/> Quarry bottom <input type="checkbox"/> Groundwater monitoring wells <input type="checkbox"/> Landfill cap
Dale Thomas	12/13/18	9:00	12:30	Fence mend	<input type="checkbox"/> Quarry bottom <input type="checkbox"/> Groundwater monitoring wells <input type="checkbox"/> Landfill cap
					<input type="checkbox"/> Quarry bottom <input type="checkbox"/> Groundwater monitoring wells <input type="checkbox"/> Landfill cap
					<input type="checkbox"/> Quarry bottom <input type="checkbox"/> Groundwater monitoring wells <input type="checkbox"/> Landfill cap
					<input type="checkbox"/> Quarry bottom <input type="checkbox"/> Groundwater monitoring wells <input type="checkbox"/> Landfill cap
					<input type="checkbox"/> Quarry bottom <input type="checkbox"/> Groundwater monitoring wells <input type="checkbox"/> Landfill cap
					<input type="checkbox"/> Quarry bottom <input type="checkbox"/> Groundwater monitoring wells <input type="checkbox"/> Landfill cap

Appendix B

2018 RQL Photographs



West part of Ramsdell Quarry Landfill, looking south from north fence.



Broken wire of 5-wire tensile fence, northwest corner.



Southeast corner of Ramsdell Quarry Landfill, looking east.



Southwest corner of Ramsdell Quarry Landfill, looking west.

Appendix C

2018 RVAAP-05 WBG Photographs

Winklepeck Burning Grounds photographs



Winklepeck Burning Grounds south gate.



Winklepeck Burning Grounds field, looking west from central portion of the site.

Winklepeck Burning Grounds photographs



Winklepeck Burning Grounds field, looking north from the central portion of the site.



Winklepeck Burning Grounds field, looking east from the central portion of the site.

Appendix D

2018 Load Lines 1, 2, 3 and 4 Photographs

Load Lines 1, 2, 3 and 4 photographs



Load Line 1 north gate.



Load Line 1 field, from southeast portion of the site looking northwest.

Load Lines 1, 2, 3 and 4 photographs



Load Line 2 south gate.



Load Line 2 field, from southeast portion of the site looking northwest.

Load Lines 1, 2, 3 and 4 photographs



Load Line 3 field, from west-central portion of the site looking northwest.



Load Line 3 field, from central portion of the site looking west.

Load Lines 1, 2, 3 and 4 photographs



Load Line 4 field, from central portion of the site looking south towards the pond.



Load Line 4 field, from the southeast portion of the site looking north.

Appendix E

2018 Load Line 12 Photographs

Load Line 12 photographs



Load Line 12 south gate.



Load Line 12 field, from the south-central portion of the site looking north.

Load Line 12 photographs



Load Line 12 field, from the central portion of the site looking west.



Load Line 12 field, from the north-central portion of the site looking south.

Appendix F

2018 Load Line 12 Access Logs

LOAD LINE 12

Sign In/Out Sheet for Load Line 12 - Please sign in and out when entering and exiting Load Line 12. Please also note what activities were performed and what areas of the AOC were accessed.

Printed Name/Company	Date	Time In	Time Out	Description of Activities Performed (i.e. mowing, GW Sampling/Maint. Training, etc.)	Areas Accessed
Jake Thomas Vista	10/29/18	9:00	10:30	Tree removal	
Ryan Lunn Roman 2013	10/31/18	0800	1400	Groundwater Sampling	
Al Brillinger Chenega	11/14/18	14:40	1500	Annual Inspection	
DON Trocchio CHENEGA	1/4/19	13:32	14:10	2018 ANNUAL LUC INSPECTION FOR LL12 & Perimeter FENCE	ALL Access Pos. Around Perimeter.

Appendix G

RVAAP-12 Load Line 12

**2018 Perimeter Fence Defect Call Outs Identified and
Repaired**

2018 CAMP JAMES A. GARFIELD PERIMETER FENCE CALLOUT/REPAIR SUMMARY TABLE
Load Line 12 2018 Annual Land Use Control Inspection

CALLOUT	DATE DISCOVERED	COMMENTS	REPAIR DATE (if reported)	NORTHING	EASTING	Perimeter Fence Mile Marker	CALLOUT
SW48	7/11/2017	washout at culvert		549116	2356699	0.40	SW48
SW49	7/12/2017	poacher hole	unknown	559690	2332105	8.90	SW49
SW50	12/11/2018	Poacher hole	1/3/2019	549430	2339931	4.00	SW50
SW51	12/12/2018	Poacher hole	1/3/2019	549379	2333939	5.10	SW51
SW52	12/12/2018	Poacher hole	1/3/2019	549378	2333817	5.11	SW52
SW53	12/12/2018	Poacher hole	1/3/2019	549373	2333435	5.20	SW53
SW54	12/12/2018	Poacher hole	1/3/2019	549365	2332737	5.40	SW54
SW55	12/13/2018	Poacher hole	1/3/2019	552281	2330050	6.60	SW55
SW56	12/13/2018	Poacher hole	1/3/2019	552846	2330044	6.70	SW56
SW57	12/13/2018	Poacher hole	1/3/2019	558183	2328746	8.20	SW57
SW58	12/17/2018	Poacher hole	1/3/2019	559197	2330175	8.60	SW58
SW59	12/18/2018	Poacher hole	1/3/2019	559856	2332769	9.04	SW59
SW60	12/18/2018	Poacher hole	1/3/2019	560783	2335709	9.60	SW60
NW22	12/20/2018	Poacher hole	1/3/2019	571803	2357624	14.40	NW22
NE43	7/19/2017	poacher hole	unknown	571120	2384589	19.90	NE43
NE44	7/20/2017	tree blow down on fence	unknown	563233	2383628	23.10	NE44
NE45	7/24/2017	fence fabric needs re-attached on top rail	unknown	563133	2380330	23.70	NE45
NE46	12/24/2018	Poacher hole	1/3/2019	573000	2377898	18.40	NE46
NE47	12/26/2018	Poacher hole	1/3/2019	571059	2381270	19.30	NE47
NE48	12/27/2018	tree blow down on fence	1/3/2019	571112	2384150	19.90	NE48
NE49	12/28/2108	tree blow down on fence	1/3/2019	563236	2383751	23.10	NE49
NE50	12/28/2018	tree blow down on fence	1/3/2019	563237	2383808	23.10	NE50
NE51	12/28/2018	tree blow down on fence	1/3/2019	563241	2383949	23.10	NE51
NE52	12/28/2018	poacher hole/beaver dam	1/3/2019	562973	2380326	23.70	NE52
SE07	12/31/2018	washout at culvert		559145	2378306	25.10	SE07

REPAIRED since previous fence inspection in July 2017

Appendix H

2018 RVAAP-12 Load Line 12 Land Use Control Index and Call-out Detail Maps

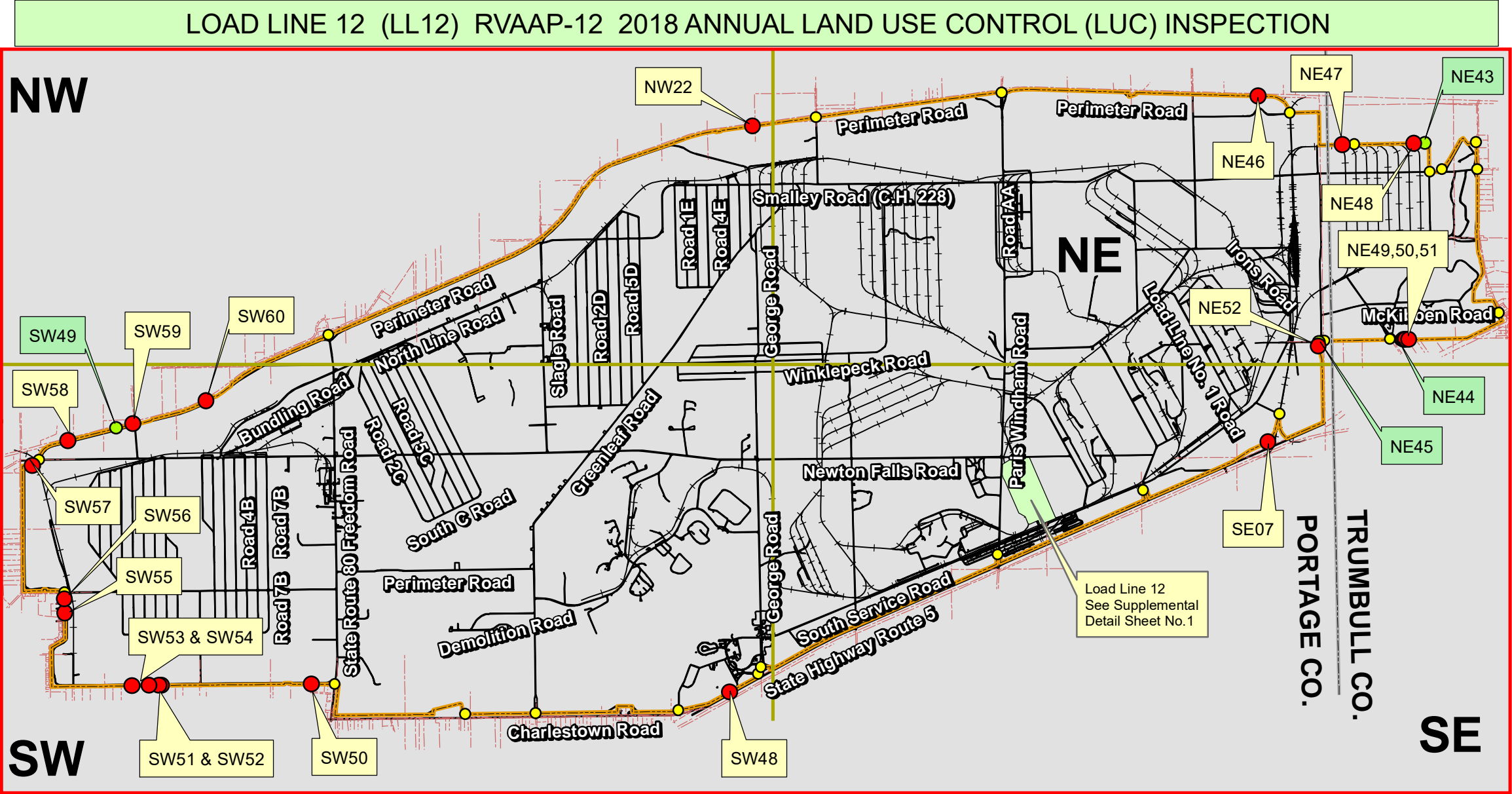


FIGURE 1 INDEX MAP TO FACILITY PERIMETER FENCE INSPECTION

Legend

LUC Inspection of Perimeter Fence

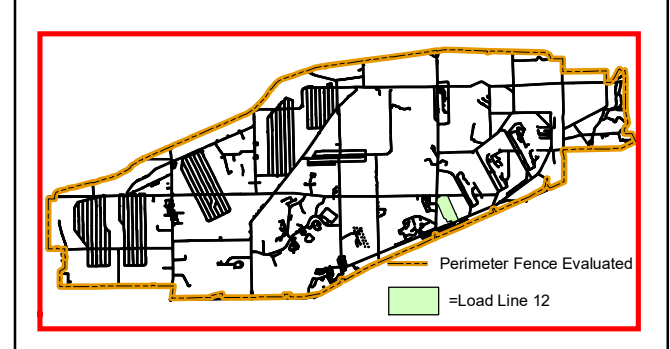
- Opening in fence (2'≥) and/or fabric missing/damaged (21 Locations)
- Repaired 4 Locations)
- Gates (26 locations for reference only, no detail sheets)
All gates appear to be maintained and are in working order

— Perimeter Fence Evaluated (29.6 miles)

Detail Sheet Callout	Detail Sheet Repair Callout
----------------------	-----------------------------

SEE ATTACHED SUMMARY TABLE AND DETAIL SHEETS FOR EACH DESIGNATED CALLOUT LOCATION

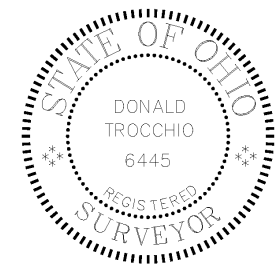
Camp James A. Garfield Joint Military Training Center



Portage & Trumbull County
LOCATOR MAP



Ohio Army National Guard



Produced in December 2018 for:

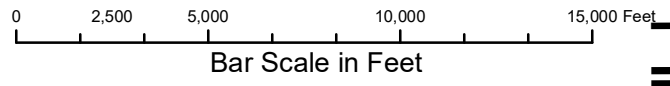


US Army Corps of Engineers
600 Dr. Martin Luther King Jr. Place
Louisville, KY 40202

Louisville District



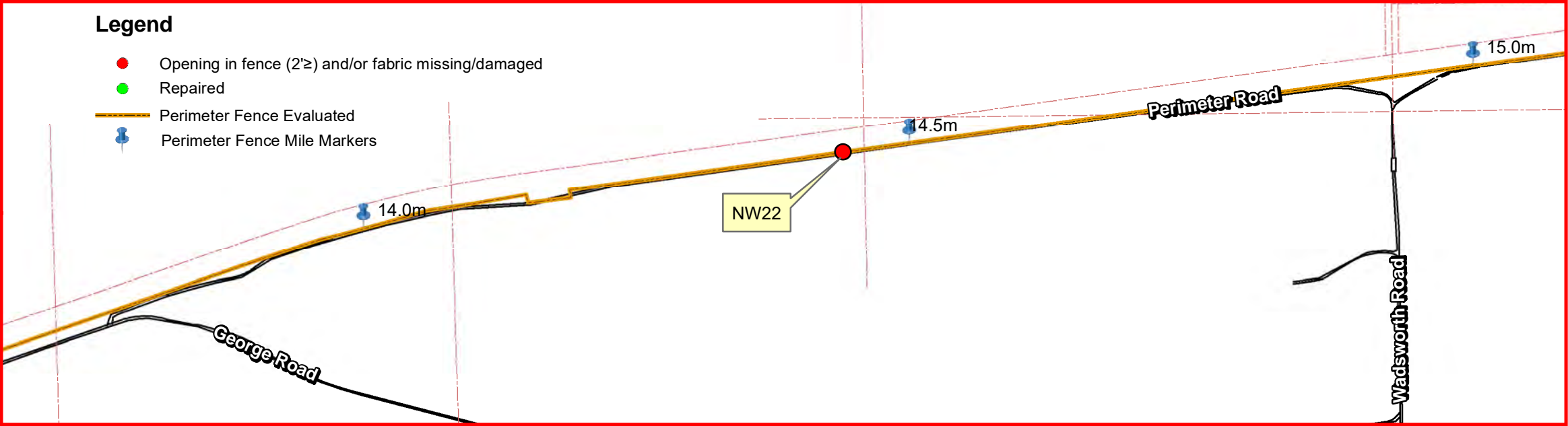
Projection Datum is NAD83, Ohio State Plane Rectangular Grid, North Zone



 CHENEGA TRI-SERVICES, LLC	Camp James A. Garfield JMTc 1438 State Route 534 SW Newton Falls, OH 44444 Don Trocchio, PS don.trocchio@chenega.com MGRS 17T NF01946150 (NAD83)
--------------------------------------	--

FIGURE 1 INDEX MAP

DETAIL SHEET FOR NW22

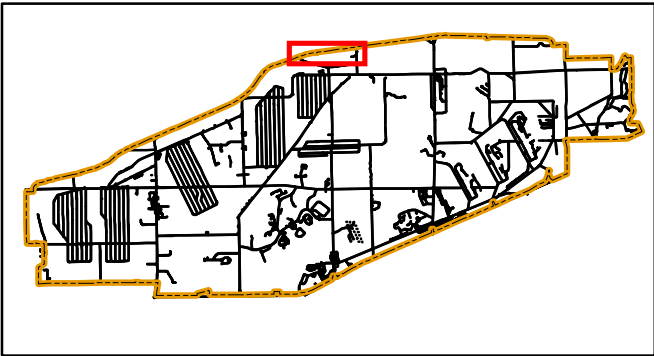


LAND USE CONTROL (LUC) 2018 ANNUAL PERIMETER FENCE INSPECTION

PHOTO NW22 discovered 12/20/2018



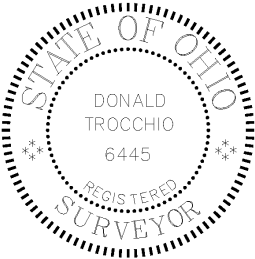
Camp James A. Garfield
Joint Military Training Center



Portage & Trumbull County
LOCATOR MAP



Ohio Army National Guard



Produced in December 2018 for:



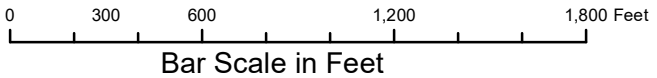
**US Army Corps of
Engineers**

600 Dr. Martin Luther King Jr. Place
Louisville, KY 40202

Louisville District



Projection Datum is NAD83, Ohio State
Plane Rectangular Grid, North Zone

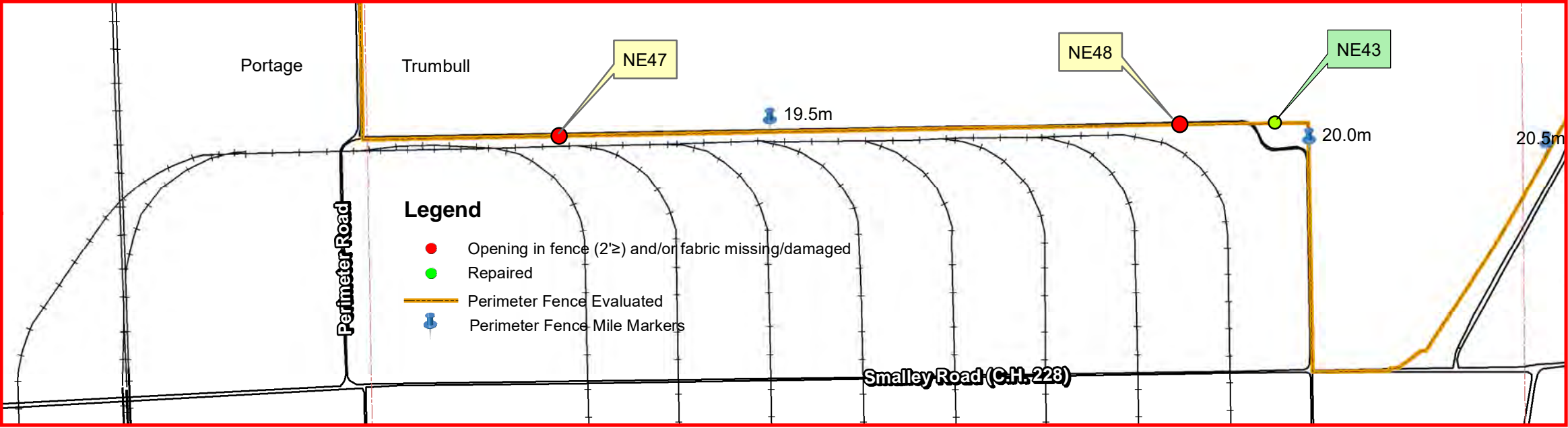


Camp James A. Garfield JMTc
1438 State Route 534 SW
Newton Falls, OH 44444
Don Trocchio, PS
don.trocchio@chenega.com

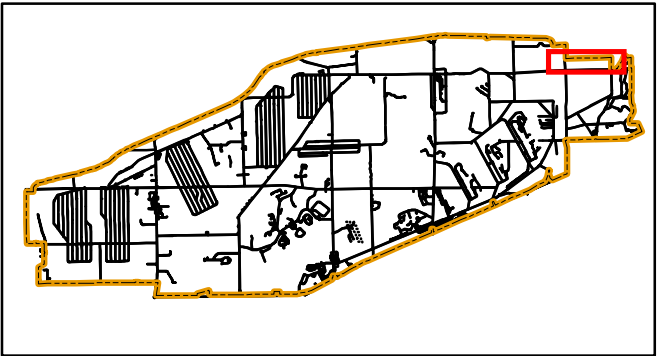
MGRS 17T NF01946150 (NAD83)

DETAIL SHEET FOR NW22

DETAIL SHEET FOR NE43



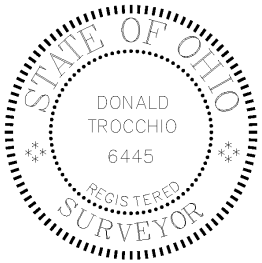
Camp James A. Garfield
Joint Military Training Center



Portage & Trumbull County
LOCATOR MAP



Ohio Army National Guard



LAND USE CONTROL (LUC) 2018 ANNUAL PERIMETER FENCE INSPECTION

Repair photo NE43 dated 12/27/2018



PHOTO NE43 discovered 7/19/2017



Produced in December 2018 for:



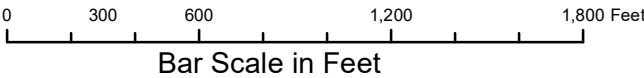
**US Army Corps of
Engineers**

600 Dr. Martin Luther King Jr. Place
Louisville, KY 40202

Louisville District



Projection Datum is NAD83, Ohio State
Plane Rectangular Grid, North Zone

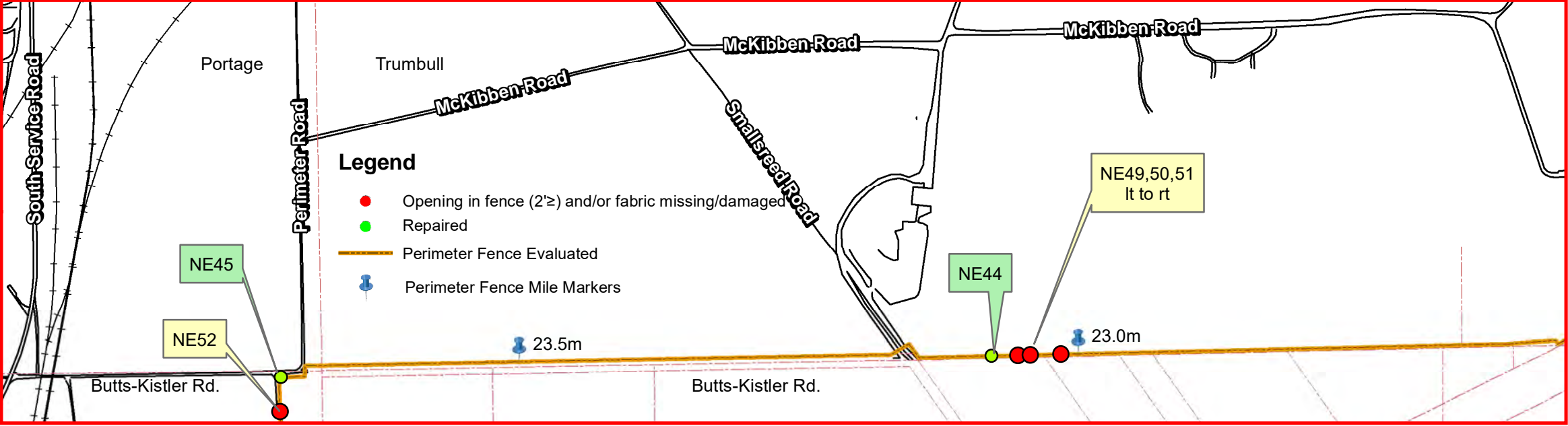


Camp James A. Garfield JMTC
1438 State Route 534 SW
Newton Falls, OH 44444
Don Trocchio, PS
don.trocchio@chenega.com

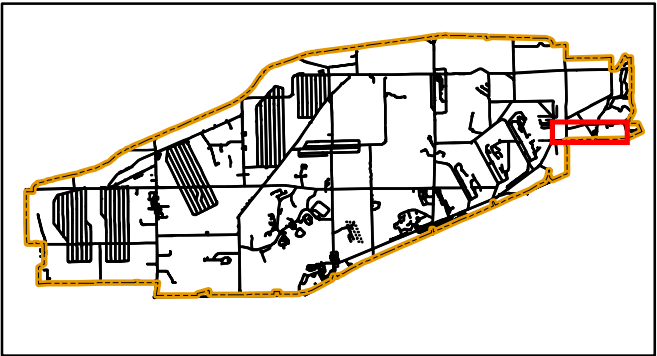
MGRS 17T NF01946150 (NAD83)

DETAIL SHEET FOR NE43

DETAIL SHEET FOR NE44



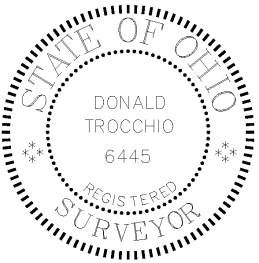
Camp James A. Garfield
Joint Military Training Center



Portage & Trumbull County
LOCATOR MAP



Ohio Army National Guard



LAND USE CONTROL (LUC) 2018 ANNUAL PERIMETER FENCE INSPECTION

Repair photo NE44 dated 12/28/2018



PHOTO NE44 discovered 7/20/2017



Produced in December 2018 for:



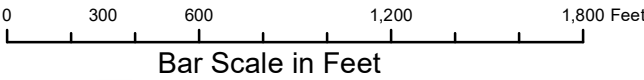
**US Army Corps of
Engineers**

600 Dr. Martin Luther King Jr. Place
Louisville, KY 40202

Louisville District



Projection Datum is NAD83, Ohio State
Plane Rectangular Grid, North Zone

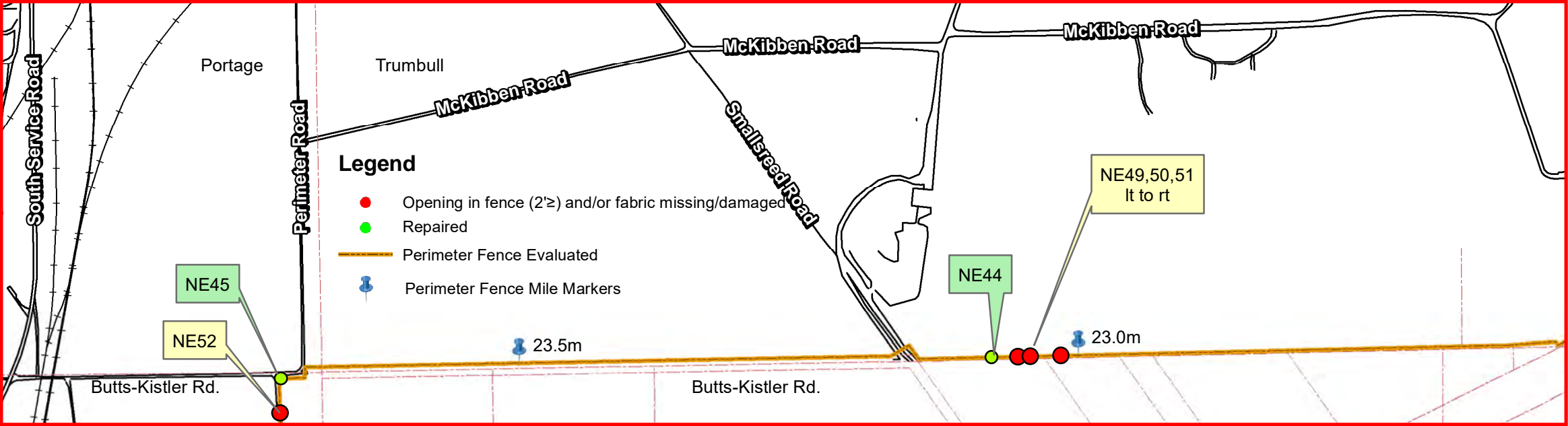


Camp James A. Garfield JMTC
1438 State Route 534 SW
Newton Falls, OH 44444
Don Trocchio, PS
don.trocchio@chenega.com

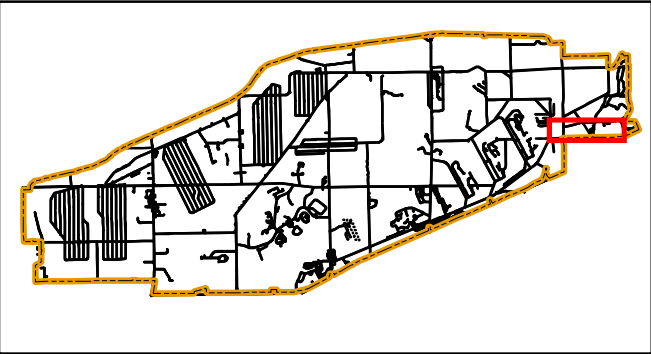
MGRS 17T NF01946150 (NAD83)

DETAIL SHEET FOR NE44

DETAIL SHEET FOR NE45



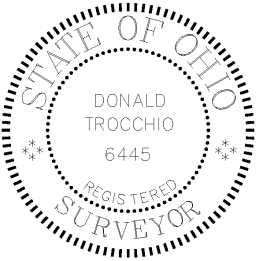
Camp James A. Garfield
Joint Military Training Center



Portage & Trumbull County
LOCATOR MAP



Ohio Army National Guard



LAND USE CONTROL (LUC) 2018 ANNUAL PERIMETER FENCE INSPECTION

Repair photo NE45 dated 12/28/2018



PHOTO NE45 discovered 7/24/2017



Produced in December 2018 for:

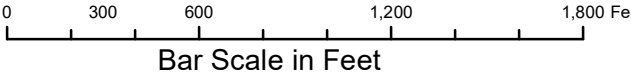


US Army Corps of Engineers
600 Dr. Martin Luther King Jr. Place
Louisville, KY 40202

Louisville District



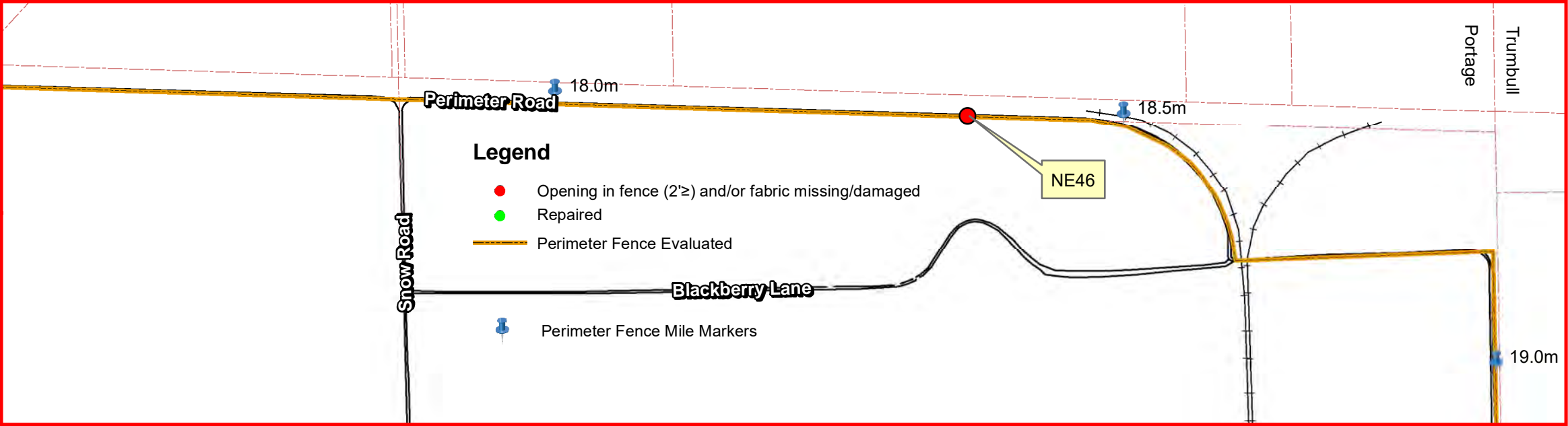
Projection Datum is NAD83, Ohio State Plane Rectangular Grid, North Zone



Camp James A. Garfield JMTc
1438 State Route 534 SW
Newton Falls, OH 44444
Don Trocchio, PS
don.trocchio@chenega.com
MGRS 17T NF01946150 (NAD83)

DETAIL SHEET FOR NE45

DETAIL SHEET FOR NE46

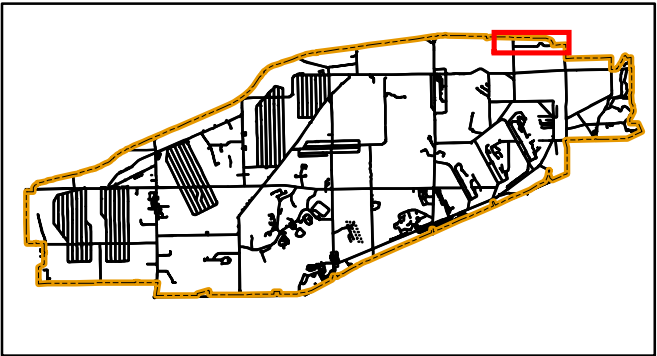


LAND USE CONTROL (LUC) 2018 ANNUAL PERIMETER FENCE INSPECTION

PHOTO NE46 discovered 12/24/2018



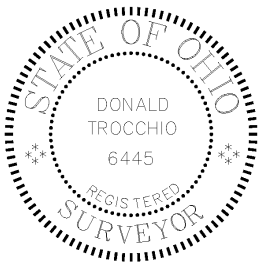
Camp James A. Garfield
Joint Military Training Center



Portage & Trumbull County
LOCATOR MAP



Ohio Army National Guard



Produced in December 2018 for:



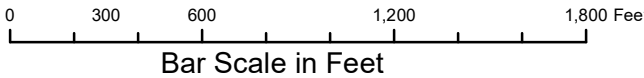
**US Army Corps of
Engineers**

600 Dr. Martin Luther King Jr. Place
Louisville, KY 40202

Louisville District



Projection Datum is NAD83, Ohio State
Plane Rectangular Grid, North Zone

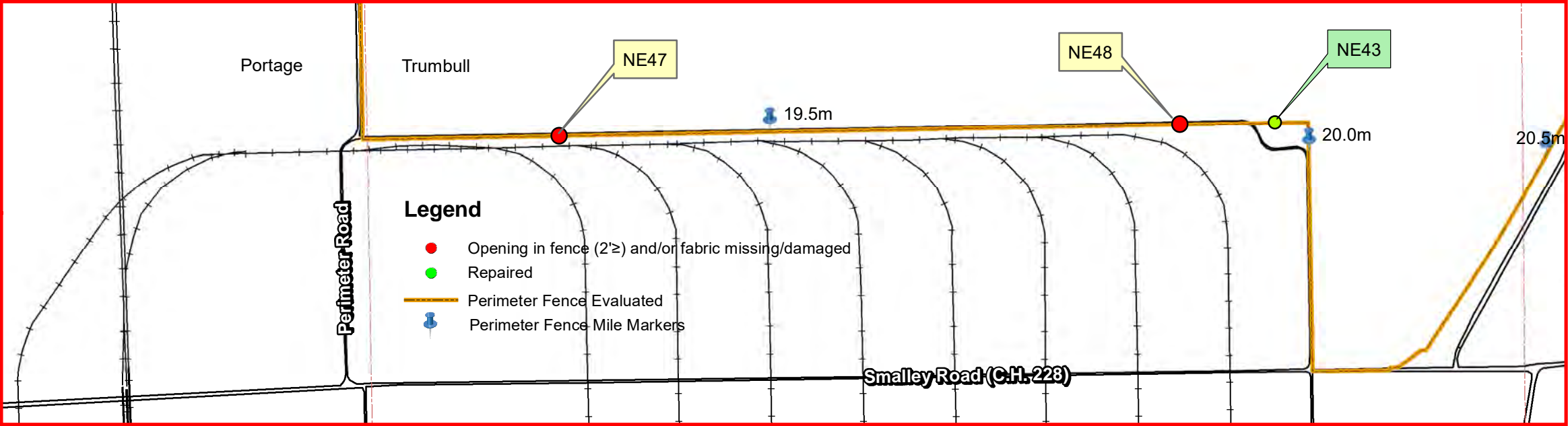


Camp James A. Garfield JMTc
1438 State Route 534 SW
Newton Falls, OH 44444
Don Trocchio, PS
don.trocchio@chenega.com

MGRS 17T NF01946150 (NAD83)

DETAIL SHEET FOR NE46

DETAIL SHEET FOR NE47

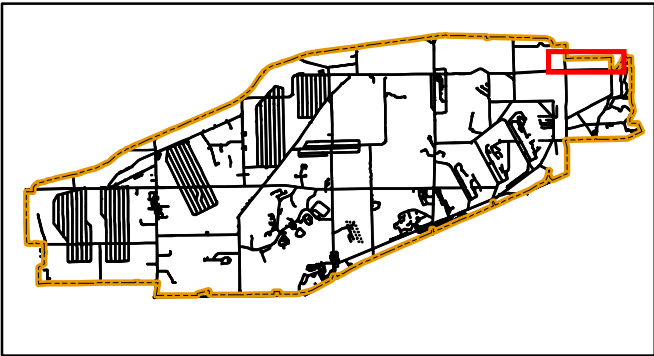


LAND USE CONTROL (LUC) 2018 ANNUAL PERIMETER FENCE INSPECTION

PHOTO NE47 discovered 12/26/2018



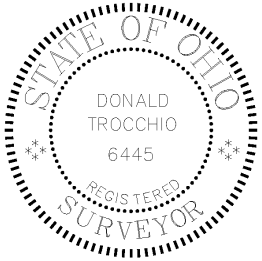
Camp James A. Garfield
Joint Military Training Center



Portage & Trumbull County
LOCATOR MAP



Ohio Army National Guard



Produced in December 2018 for:



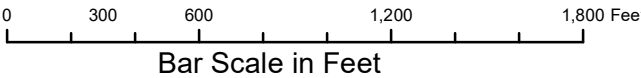
**US Army Corps of
Engineers**

600 Dr. Martin Luther King Jr. Place
Louisville, KY 40202

Louisville District



Projection Datum is NAD83, Ohio State
Plane Rectangular Grid, North Zone

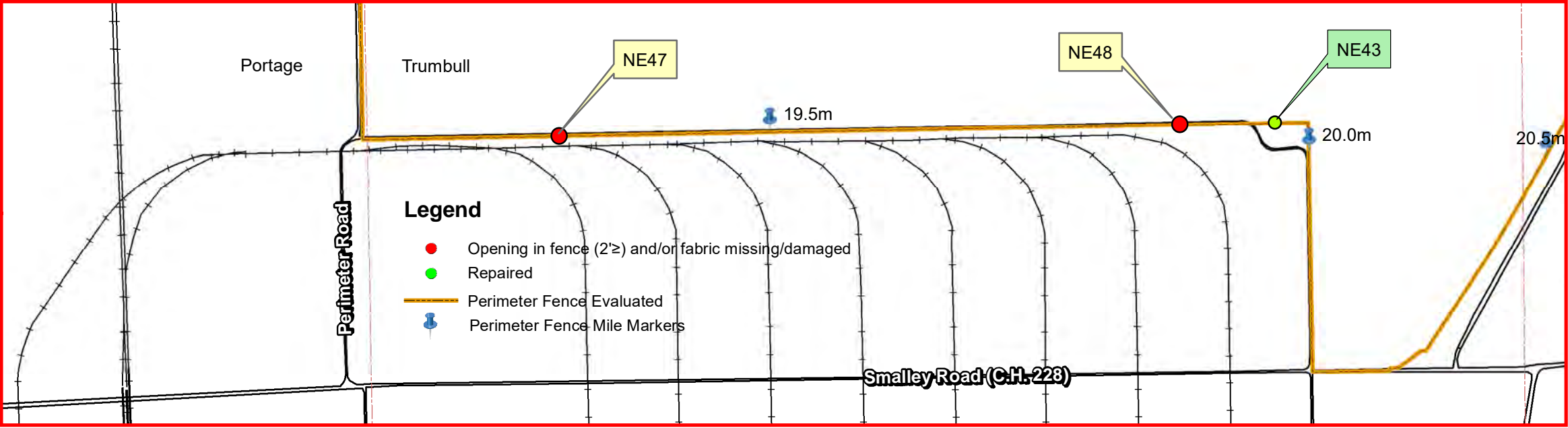


Camp James A. Garfield JMTc
1438 State Route 534 SW
Newton Falls, OH 44444
Don Trocchio, PS
don.trocchio@chenega.com

MGRS 17T NF01946150 (NAD83)

DETAIL SHEET FOR NE47

DETAIL SHEET FOR NE48

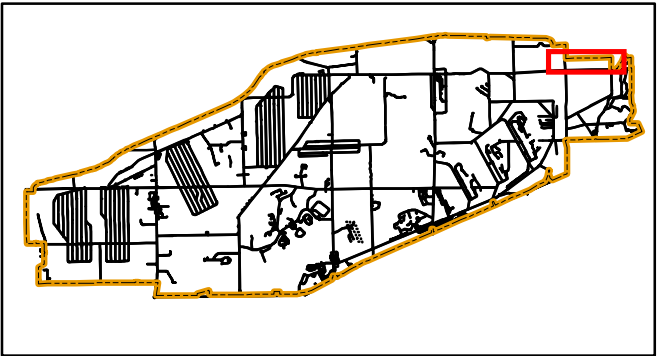


LAND USE CONTROL (LUC) 2018 ANNUAL PERIMETER FENCE INSPECTION

PHOTO NE48 discovered 12/27/2018



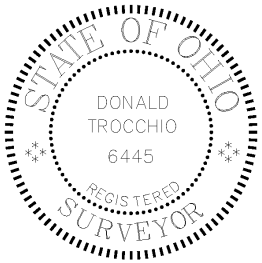
Camp James A. Garfield
Joint Military Training Center



Portage & Trumbull County
LOCATOR MAP



Ohio Army National Guard



Produced in December 2018 for:



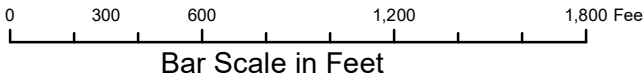
**US Army Corps of
Engineers**

600 Dr. Martin Luther King Jr. Place
Louisville, KY 40202

Louisville District



Projection Datum is NAD83, Ohio State
Plane Rectangular Grid, North Zone

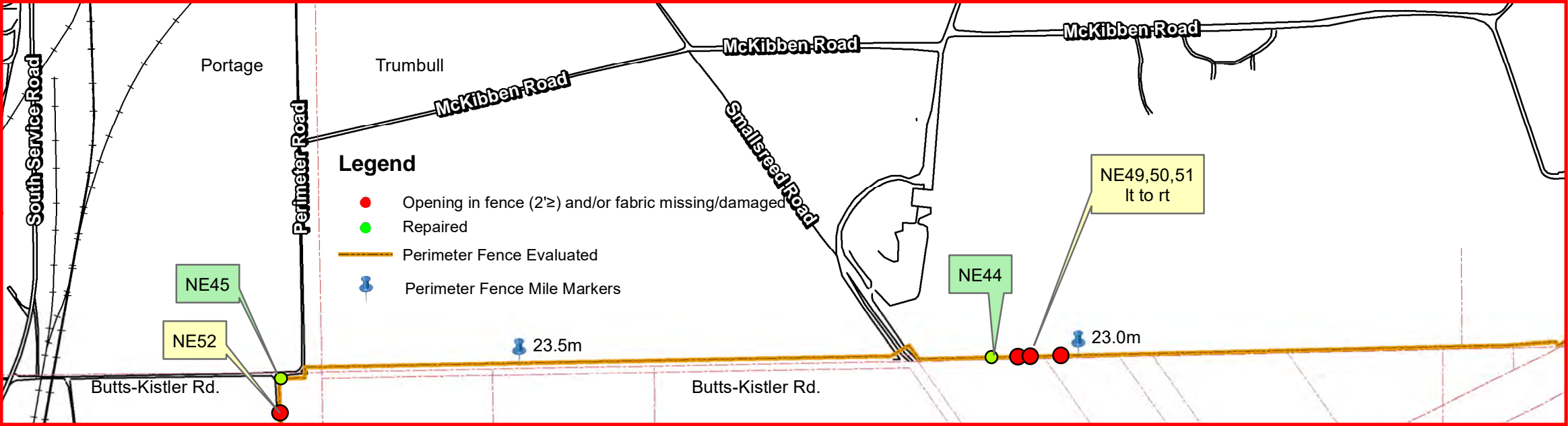


Camp James A. Garfield JMTc
1438 State Route 534 SW
Newton Falls, OH 44444
Don Trocchio, PS
don.trocchio@chenega.com

MGRS 17T NF01946150 (NAD83)

DETAIL SHEET FOR NE48

DETAIL SHEET FOR NE49

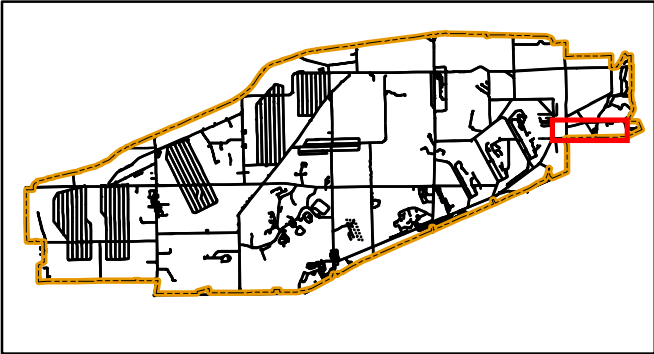


LAND USE CONTROL (LUC) 2018 ANNUAL PERIMETER FENCE INSPECTION

PHOTO NE49 discovered 12/28/2018



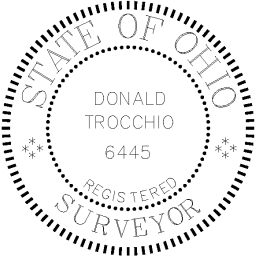
Camp James A. Garfield
Joint Military Training Center



Portage & Trumbull County
LOCATOR MAP



Ohio Army National Guard



Produced in December 2018 for:



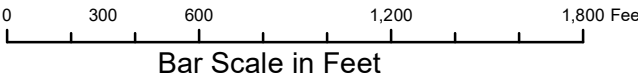
**US Army Corps of
Engineers**

600 Dr. Martin Luther King Jr. Place
Louisville, KY 40202

Louisville District



Projection Datum is NAD83, Ohio State
Plane Rectangular Grid, North Zone

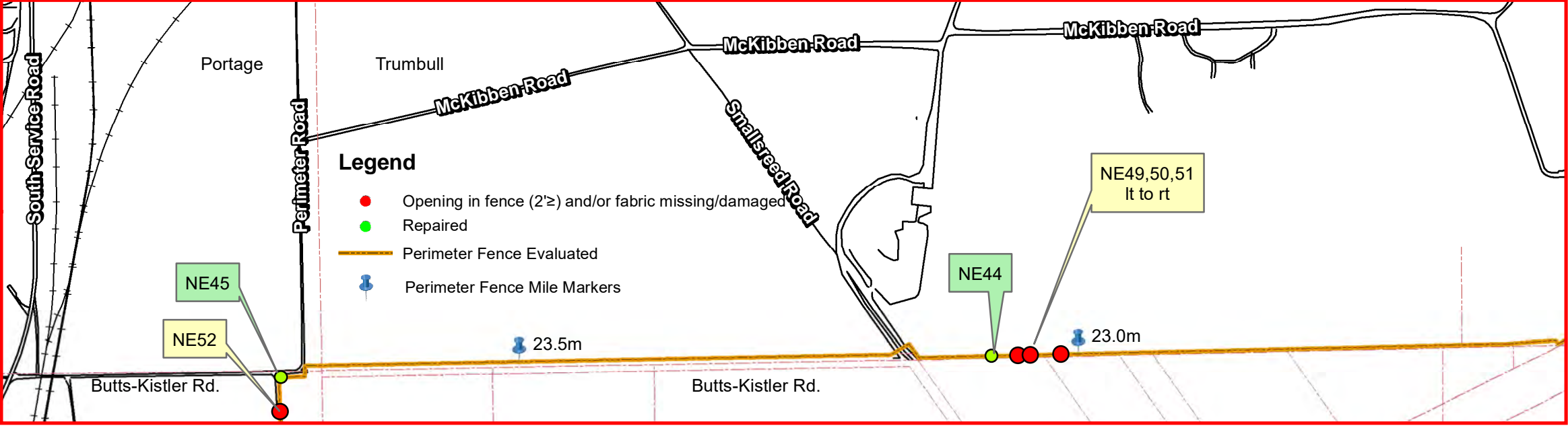


Camp James A. Garfield JMTc
1438 State Route 534 SW
Newton Falls, OH 44444
Don Trocchio, PS
don.trocchio@chenega.com

MGRS 17T NF01946150 (NAD83)

DETAIL SHEET FOR NE49

DETAIL SHEET FOR NE50

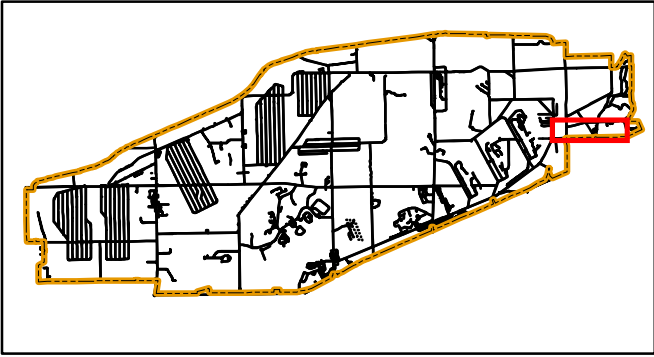


LAND USE CONTROL (LUC) 2018 ANNUAL PERIMETER FENCE INSPECTION

PHOTO NE50 discovered 12/28/2018



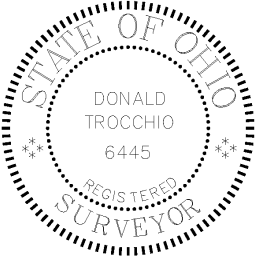
Camp James A. Garfield
Joint Military Training Center



Portage & Trumbull County
LOCATOR MAP



Ohio Army National Guard



Produced in December 2018 for:



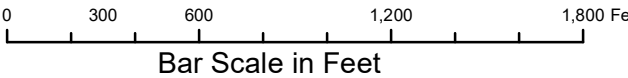
**US Army Corps of
Engineers**

600 Dr. Martin Luther King Jr. Place
Louisville, KY 40202

Louisville District



Projection Datum is NAD83, Ohio State
Plane Rectangular Grid, North Zone

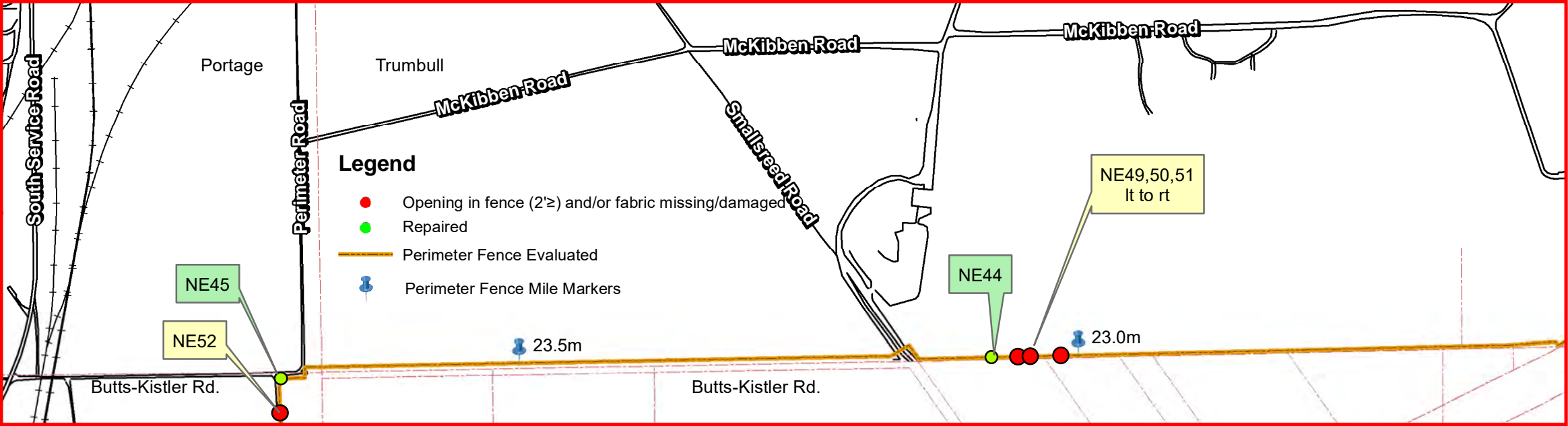


Camp James A. Garfield JMTc
1438 State Route 534 SW
Newton Falls, OH 44444
Don Trocchio, PS
don.trocchio@chenega.com

MGRS 17T NF01946150 (NAD83)

DETAIL SHEET FOR NE50

DETAIL SHEET FOR NE51

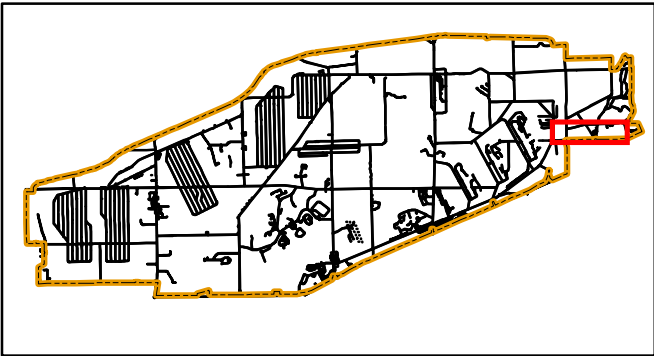


LAND USE CONTROL (LUC) 2018 ANNUAL PERIMETER FENCE INSPECTION

PHOTO NE51 discovered 12/28/2018



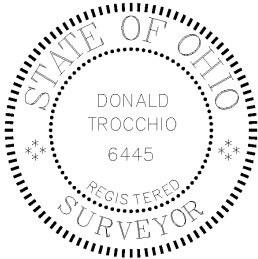
Camp James A. Garfield
Joint Military Training Center



Portage & Trumbull County
LOCATOR MAP



Ohio Army National Guard



Produced in December 2018 for:



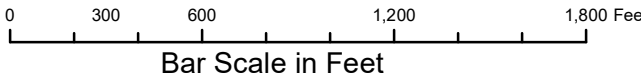
**US Army Corps of
Engineers**

600 Dr. Martin Luther King Jr. Place
Louisville, KY 40202

Louisville District



Projection Datum is NAD83, Ohio State
Plane Rectangular Grid, North Zone

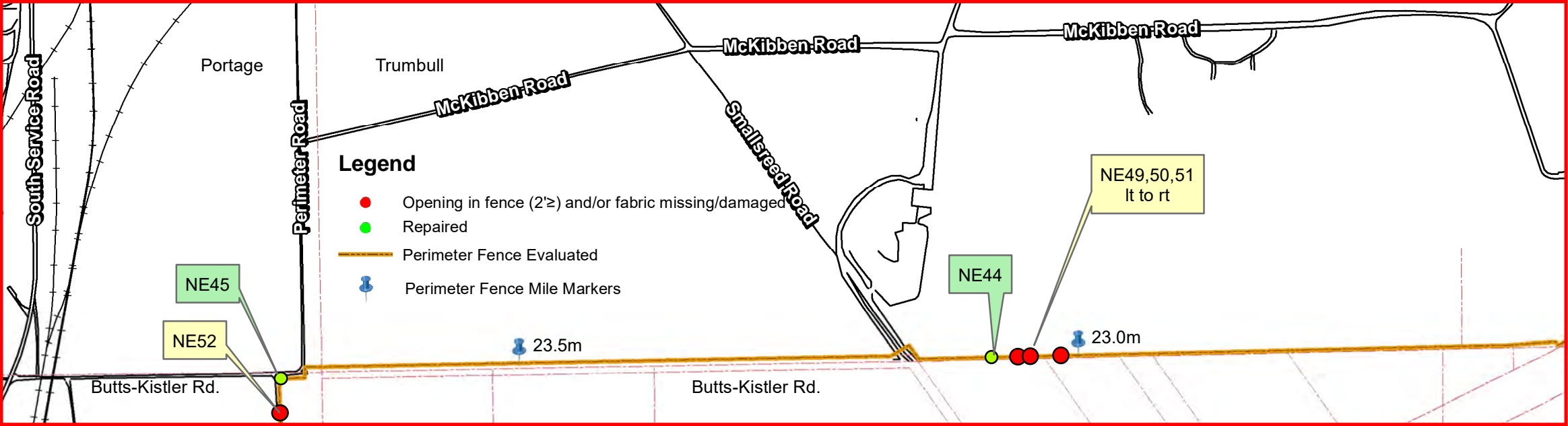


Camp James A. Garfield JMTc
1438 State Route 534 SW
Newton Falls, OH 44444
Don Trocchio, PS
don.trocchio@chenega.com

MGRS 17T NF01946150 (NAD83)

DETAIL SHEET FOR NE51

DETAIL SHEET FOR NE52

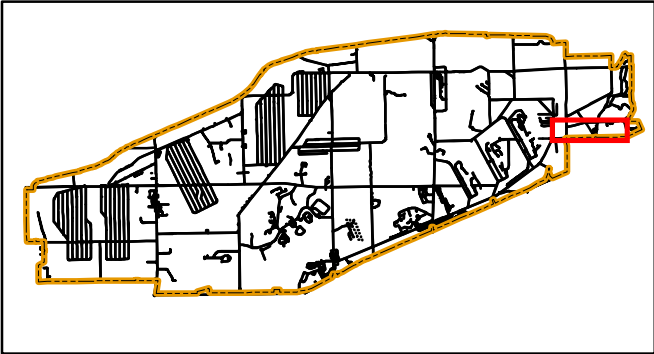


LAND USE CONTROL (LUC) 2018 ANNUAL PERIMETER FENCE INSPECTION

PHOTO NE52 discovered 12/28/2018



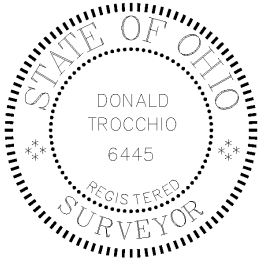
Camp James A. Garfield
Joint Military Training Center



Portage & Trumbull County
LOCATOR MAP



Ohio Army National Guard



Produced in December 2018 for:



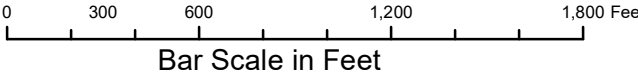
**US Army Corps of
Engineers**

600 Dr. Martin Luther King Jr. Place
Louisville, KY 40202

Louisville District



Projection Datum is NAD83, Ohio State
Plane Rectangular Grid, North Zone

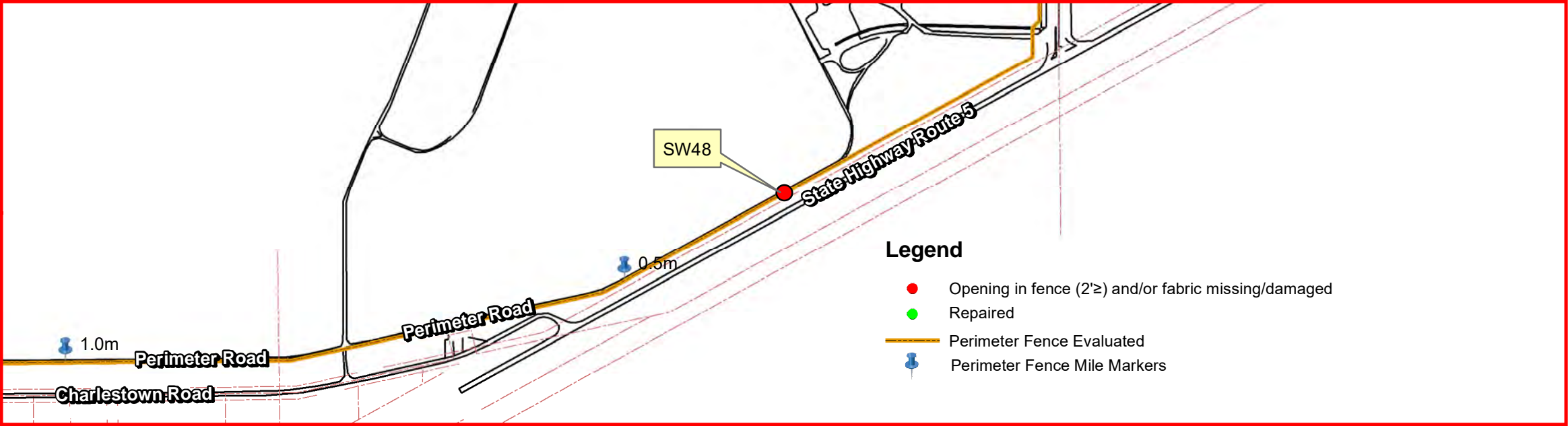


Camp James A. Garfield JMTc
1438 State Route 534 SW
Newton Falls, OH 44444
Don Trocchio, PS
don.trocchio@chenega.com

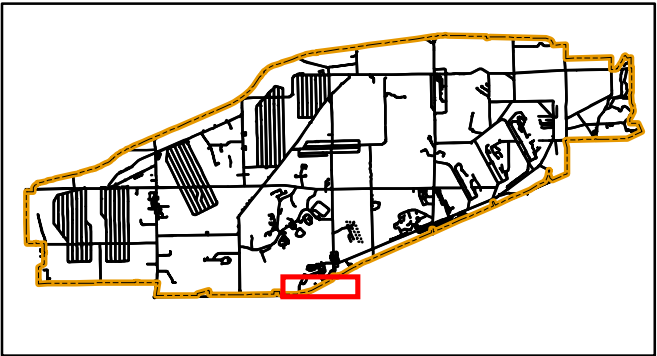
MGRS 17T NF01946150 (NAD83)

DETAIL SHEET FOR NE52

DETAIL SHEET FOR SW48



Camp James A. Garfield
Joint Military Training Center



Portage & Trumbull County
LOCATOR MAP



Ohio Army National Guard



LAND USE CONTROL (LUC) 2018 ANNUAL PERIMETER FENCE INSPECTION

UPDATED PHOTO SW48 12/10/2018



PHOTO SW48 discovered 7/11/2017



Produced in December 2018 for:



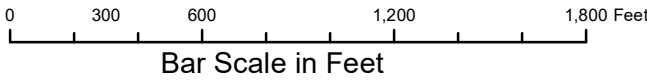
**US Army Corps of
Engineers**

600 Dr. Martin Luther King Jr. Place
Louisville, KY 40202

Louisville District



Projection Datum is NAD83, Ohio State
Plane Rectangular Grid, North Zone

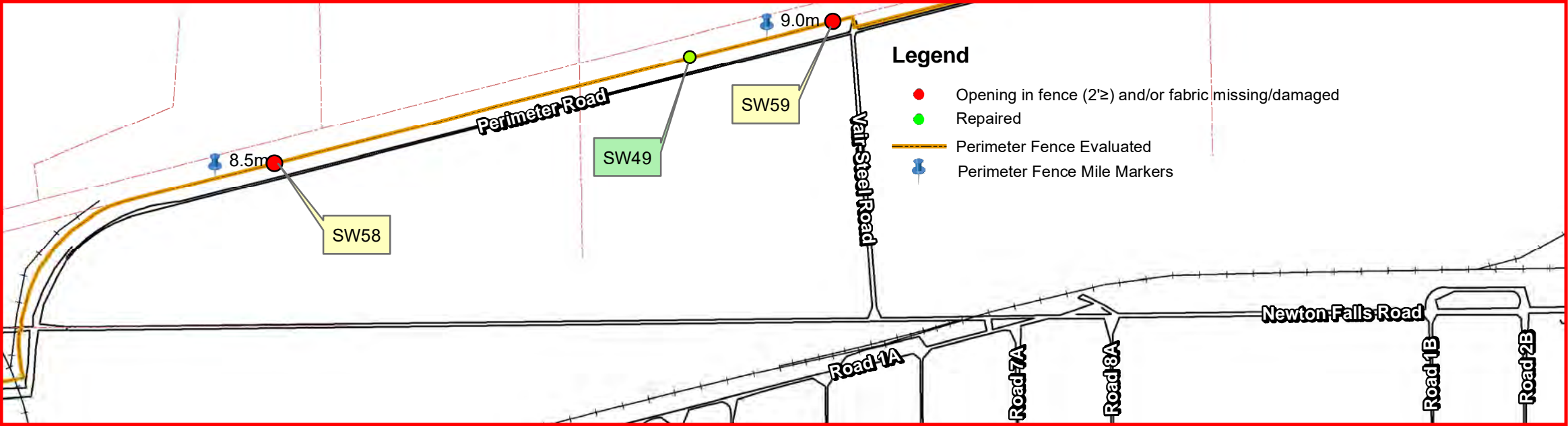


Camp James A. Garfield JMTc
1438 State Route 534 SW
Newton Falls, OH 44444
Don Trocchio, PS
don.trocchio@chenega.com

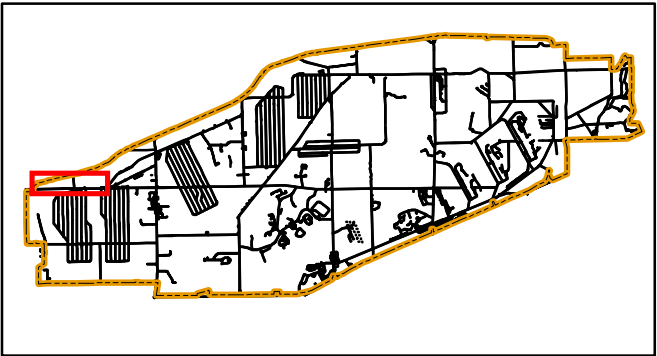
MGRS 17T NF01946150 (NAD83)

DETAIL SHEET FOR SW48

DETAIL SHEET FOR SW49



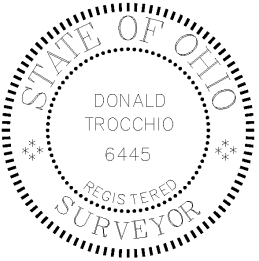
Camp James A. Garfield
Joint Military Training Center



Portage & Trumbull County
LOCATOR MAP



Ohio Army National Guard



LAND USE CONTROL (LUC) 2018 ANNUAL PERIMETER FENCE INSPECTION

Repair photo SW49 dated 12/17/2018



PHOTO SW49 discovered 07/12/2017



Produced in December 2018 for:



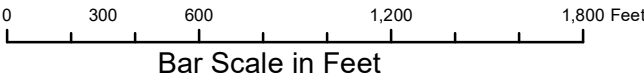
**US Army Corps of
Engineers**

600 Dr. Martin Luther King Jr. Place
Louisville, KY 40202

Louisville District



Projection Datum is NAD83, Ohio State
Plane Rectangular Grid, North Zone

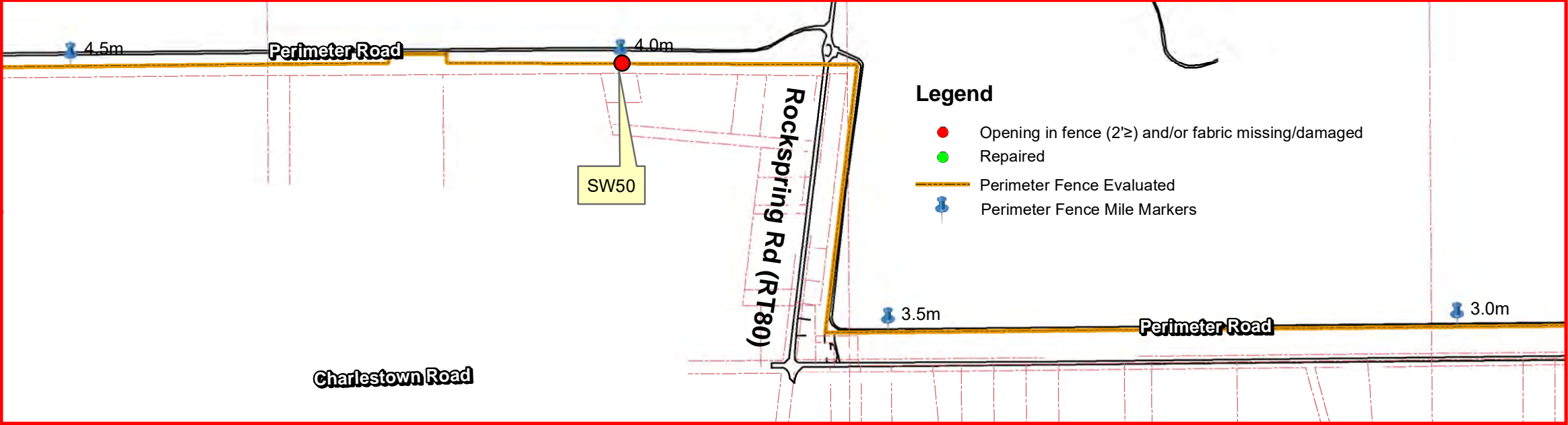


Camp James A. Garfield JMTC
1438 State Route 534 SW
Newton Falls, OH 44444
Don Trocchio, PS
don.trocchio@chenega.com

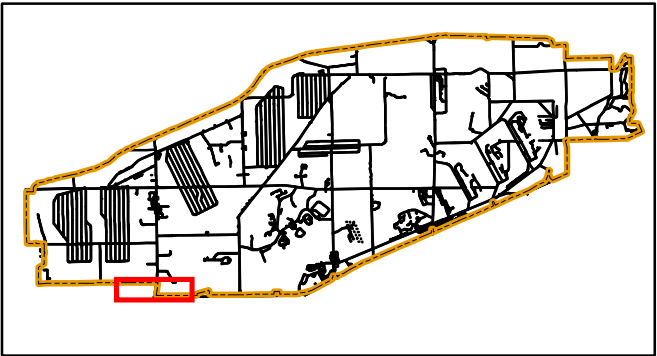
MGRS 17T NF01946150 (NAD83)

DETAIL SHEET FOR SW49

DETAIL SHEET FOR SW50



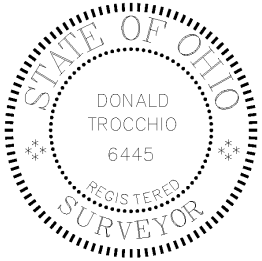
Camp James A. Garfield
Joint Military Training Center



Portage & Trumbull County
LOCATOR MAP



Ohio Army National Guard



LAND USE CONTROL (LUC) 2018 ANNUAL PERIMETER FENCE INSPECTION

PHOTO SW50 discovered 12/11/2018



Produced in December 2018 for:



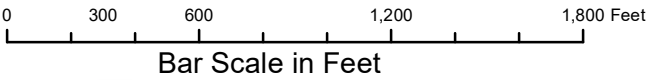
**US Army Corps of
Engineers**

600 Dr. Martin Luther King Jr. Place
Louisville, KY 40202

Louisville District



Projection Datum is NAD83, Ohio State
Plane Rectangular Grid, North Zone

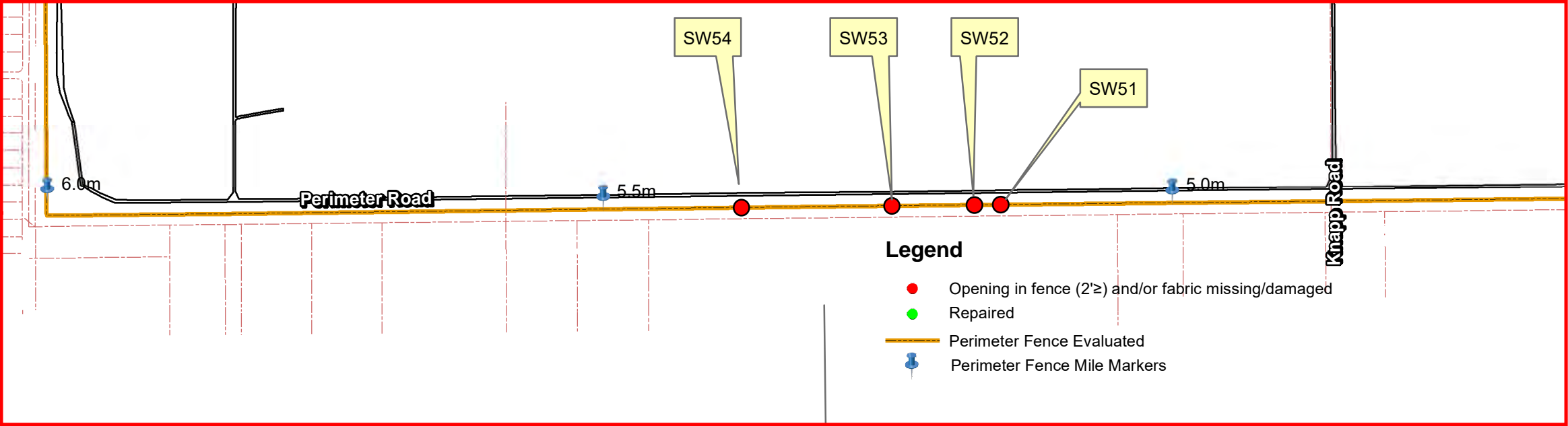


Camp James A. Garfield JMTc
1438 State Route 534 SW
Newton Falls, OH 44444
Don Trocchio, PS
don.trocchio@chenega.com

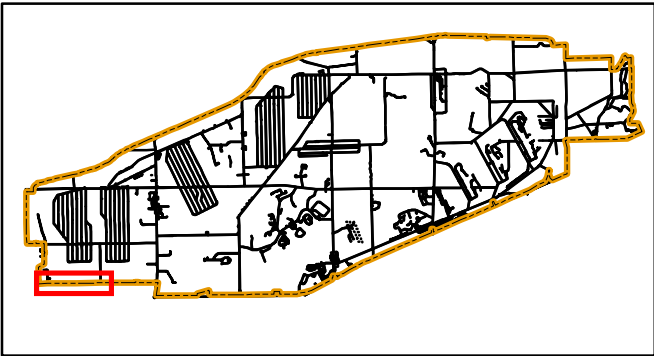
MGRS 17T NF01946150 (NAD83)

DETAIL SHEET FOR SW50

DETAIL SHEET FOR SW51



Camp James A. Garfield
Joint Military Training Center



Portage & Trumbull County
LOCATOR MAP



Ohio Army National Guard



LAND USE CONTROL (LUC) 2018 ANNUAL PERIMETER FENCE INSPECTION

PHOTO SW51 discovered 12/12/2018



Produced in December 2018 for:



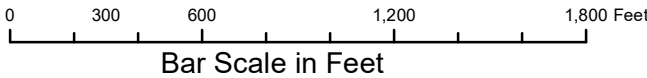
US Army Corps of
Engineers

600 Dr. Martin Luther King Jr. Place
Louisville, KY 40202

Louisville District



Projection Datum is NAD83, Ohio State
Plane Rectangular Grid, North Zone

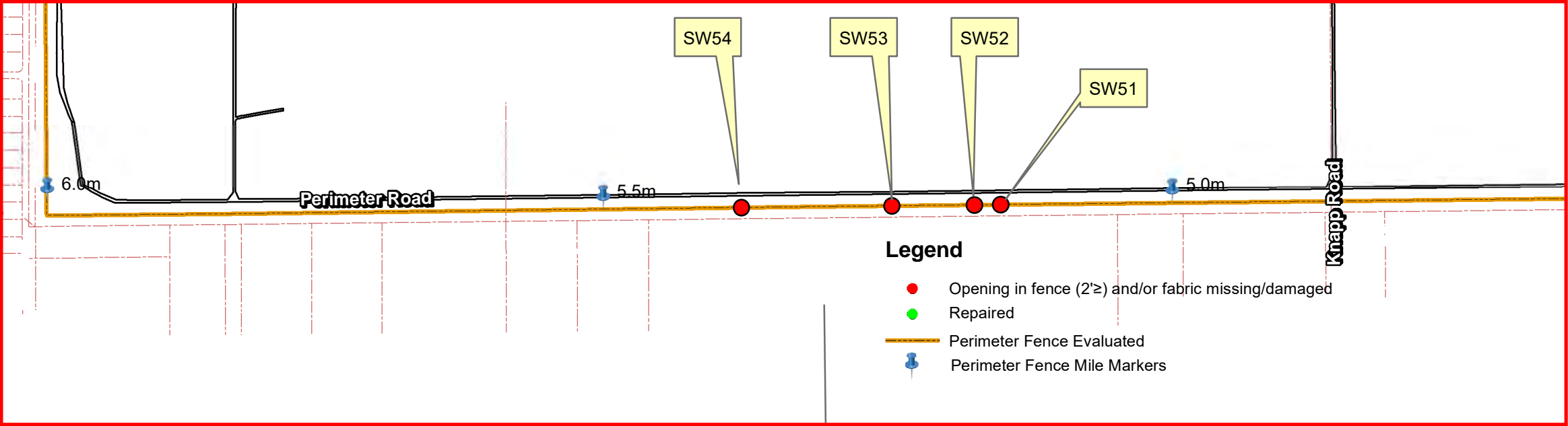


Camp James A. Garfield JMTc
1438 State Route 534 SW
Newton Falls, OH 44444
Don Trocchio, PS
don.trocchio@chenega.com

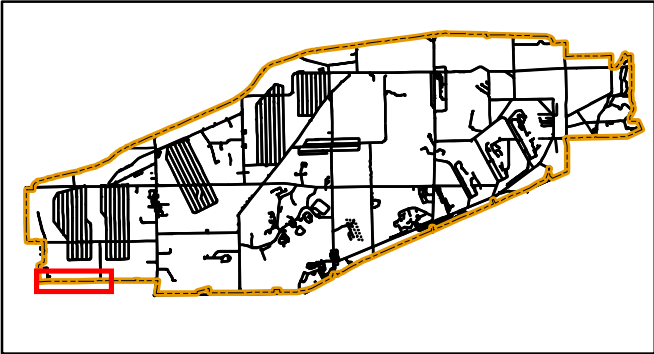
MGRS 17T NF01946150 (NAD83)

DETAIL SHEET FOR SW51

DETAIL SHEET FOR SW52



Camp James A. Garfield
Joint Military Training Center



Portage & Trumbull County
LOCATOR MAP

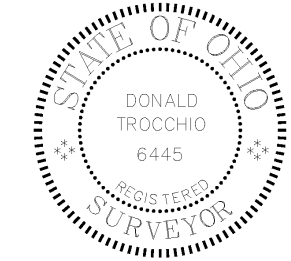


Ohio Army National Guard



LAND USE CONTROL (LUC) 2018 ANNUAL PERIMETER FENCE INSPECTION

PHOTO SW52 discovered 12/12/2018



Produced in December 2018 for:



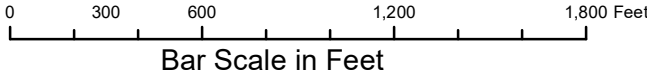
US Army Corps of
Engineers

600 Dr. Martin Luther King Jr. Place
Louisville, KY 40202

Louisville District



Projection Datum is NAD83, Ohio State
Plane Rectangular Grid, North Zone

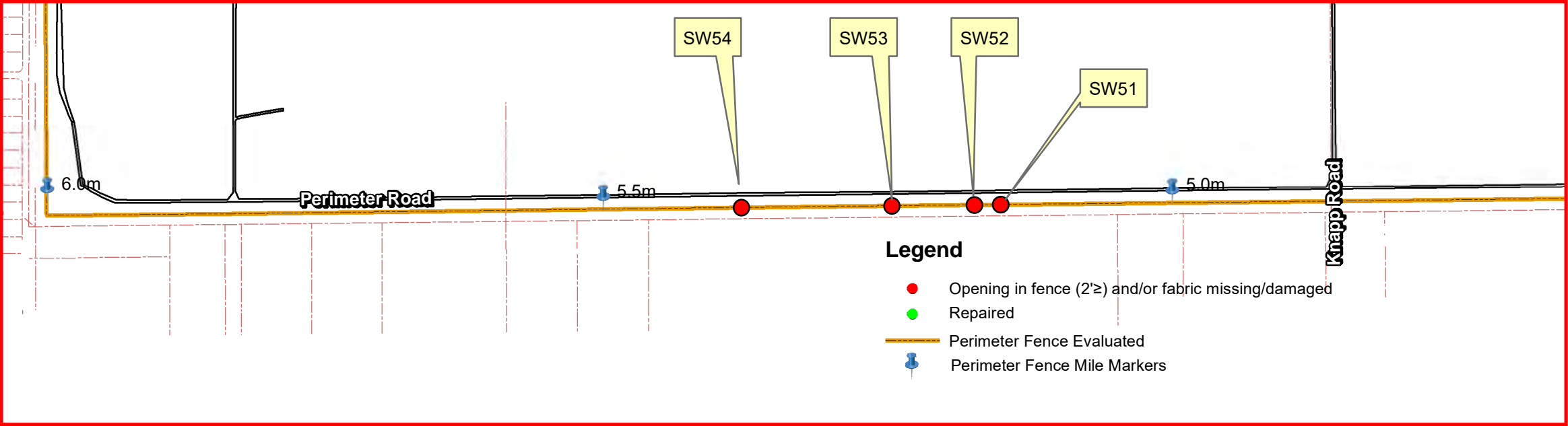


Camp James A. Garfield JMTC
1438 State Route 534 SW
Newton Falls, OH 44444
Don Trocchio, PS
don.trocchio@chenega.com

MGRS 17T NF01946150 (NAD83)

DETAIL SHEET FOR SW52

DETAIL SHEET FOR SW53

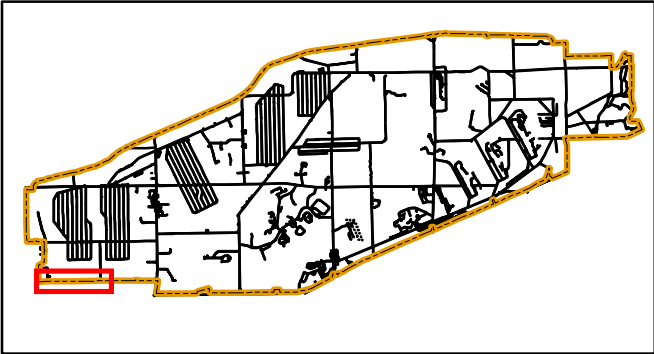


LAND USE CONTROL (LUC) 2018 ANNUAL PERIMETER FENCE INSPECTION

PHOTO SW53 discovered 12/12/2018



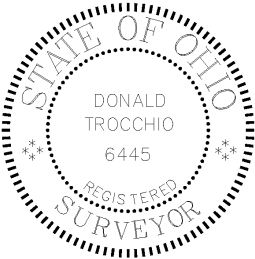
Camp James A. Garfield
Joint Military Training Center



Portage & Trumbull County
LOCATOR MAP



Ohio Army National Guard



Produced in December 2018 for:



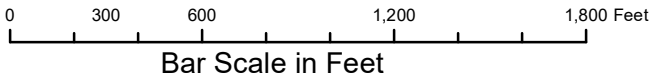
**US Army Corps of
Engineers**

600 Dr. Martin Luther King Jr. Place
Louisville, KY 40202

Louisville District



Projection Datum is NAD83, Ohio State
Plane Rectangular Grid, North Zone

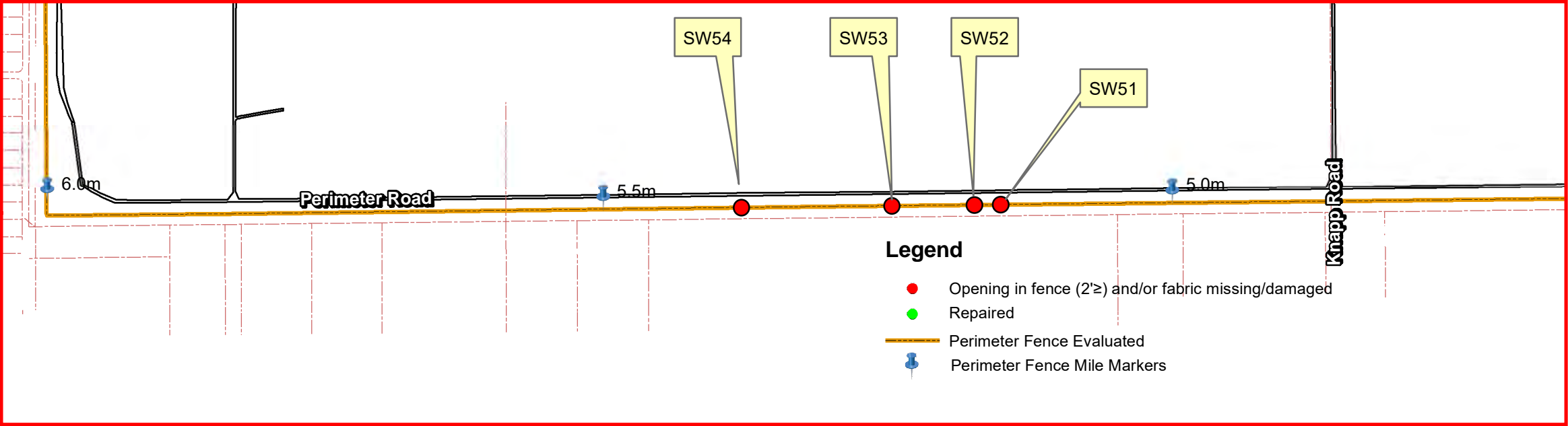


Camp James A. Garfield JMTc
1438 State Route 534 SW
Newton Falls, OH 44444
Don Trocchio, PS
don.trocchio@chenega.com

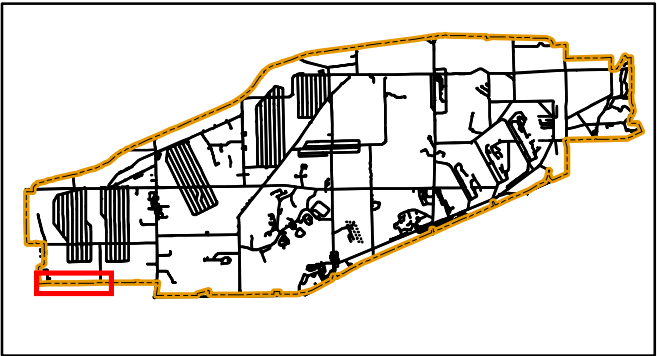
MGRS 17T NF01946150 (NAD83)

DETAIL SHEET FOR SW53

DETAIL SHEET FOR SW54



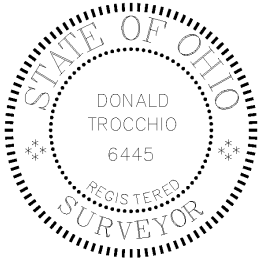
Camp James A. Garfield
Joint Military Training Center



Portage & Trumbull County
LOCATOR MAP



Ohio Army National Guard



LAND USE CONTROL (LUC) 2018 ANNUAL PERIMETER FENCE INSPECTION

PHOTO SW54 discovered 12/12/2018



Produced in December 2018 for:



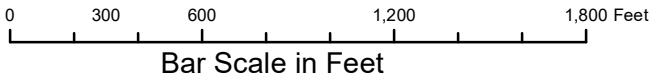
**US Army Corps of
Engineers**

600 Dr. Martin Luther King Jr. Place
Louisville, KY 40202

Louisville District



Projection Datum is NAD83, Ohio State
Plane Rectangular Grid, North Zone

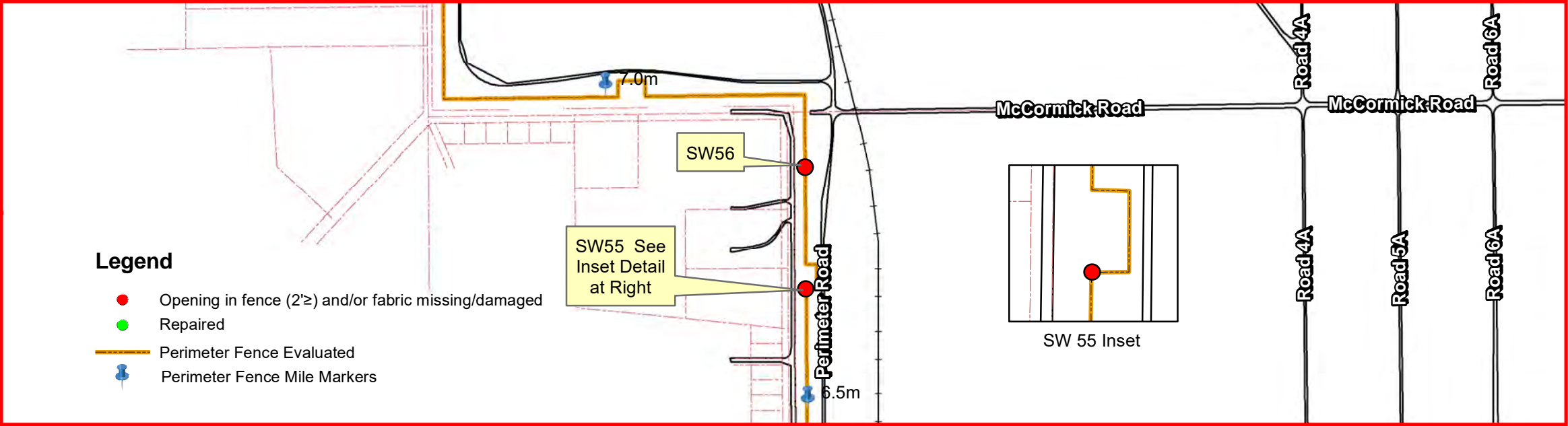


Camp James A. Garfield JMTc
1438 State Route 534 SW
Newton Falls, OH 44444
Don Trocchio, PS
don.trocchio@chenega.com

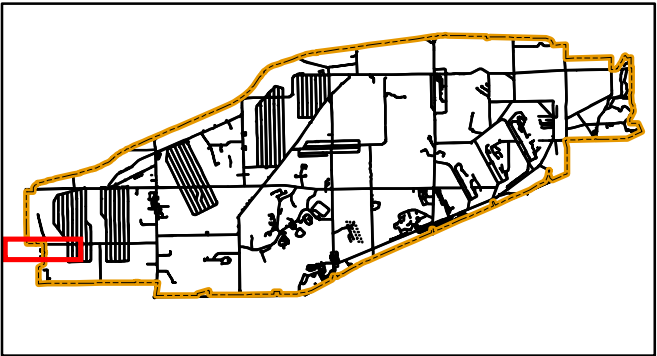
MGRS 17T NF01946150 (NAD83)

DETAIL SHEET FOR SW54

DETAIL SHEET FOR SW55



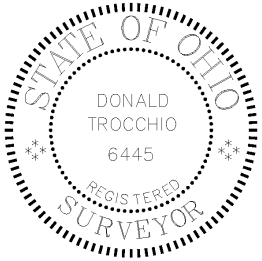
Camp James A. Garfield
Joint Military Training Center



Portage & Trumbull County
LOCATOR MAP



Ohio Army National Guard



LAND USE CONTROL (LUC) 2018 ANNUAL PERIMETER FENCE INSPECTION

PHOTO SW55 discovered 12/13/2018



Produced in December 2018 for:



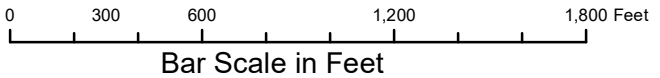
**US Army Corps of
Engineers**

600 Dr. Martin Luther King Jr. Place
Louisville, KY 40202

Louisville District



Projection Datum is NAD83, Ohio State
Plane Rectangular Grid, North Zone

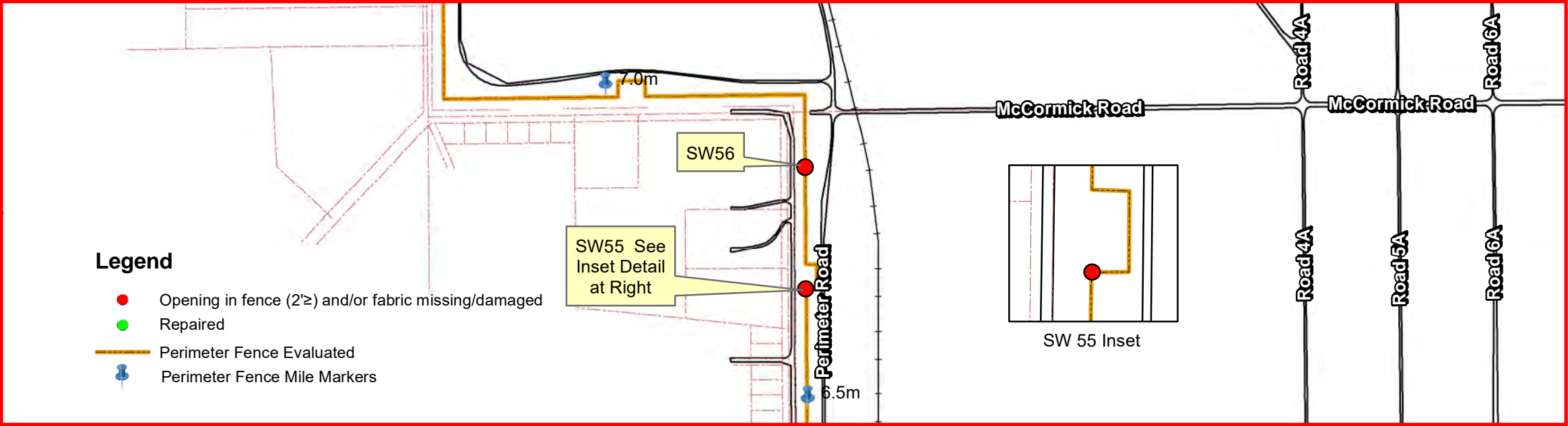


Camp James A. Garfield JMTc
1438 State Route 534 SW
Newton Falls, OH 44444
Don Trocchio, PS
don.trocchio@chenega.com

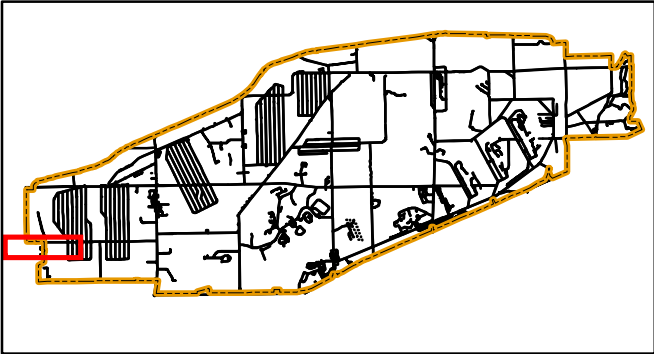
MGRS 17T NF01946150 (NAD83)

DETAIL SHEET FOR SW55

DETAIL SHEET FOR SW56



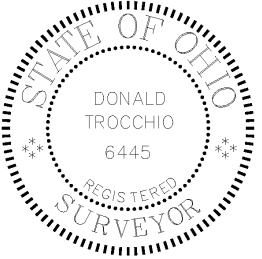
Camp James A. Garfield
Joint Military Training Center



Portage & Trumbull County
LOCATOR MAP



Ohio Army National Guard



LAND USE CONTROL (LUC) 2018 ANNUAL PERIMETER FENCE INSPECTION

PHOTO SW56 discovered 12/13/2018



Produced in December 2018 for:



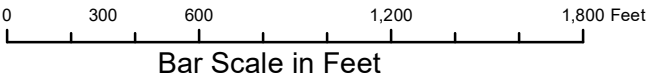
**US Army Corps of
Engineers**

600 Dr. Martin Luther King Jr. Place
Louisville, KY 40202

Louisville District



Projection Datum is NAD83, Ohio State
Plane Rectangular Grid, North Zone

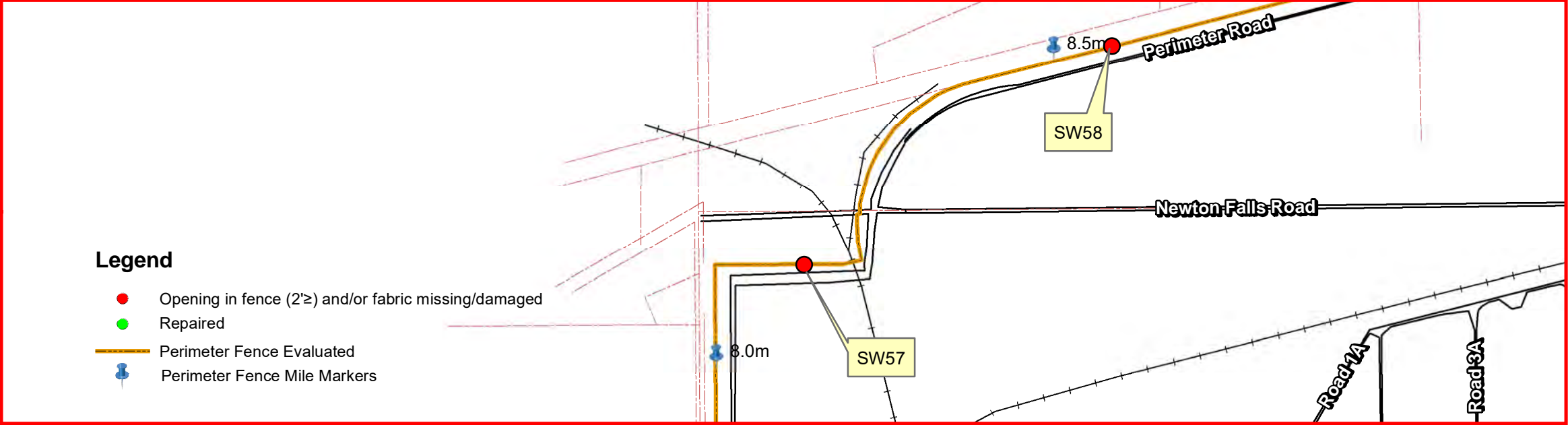


Camp James A. Garfield JMTc
1438 State Route 534 SW
Newton Falls, OH 44444
Don Trocchio, PS
don.trocchio@chenega.com

MGRS 17T NF01946150 (NAD83)

DETAIL SHEET FOR SW56

DETAIL SHEET FOR SW57

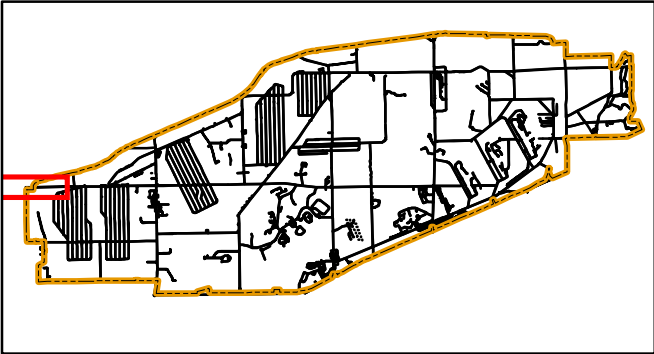


LAND USE CONTROL (LUC) 2018 ANNUAL PERIMETER FENCE INSPECTION

PHOTO SW57 discovered 12/13/2018



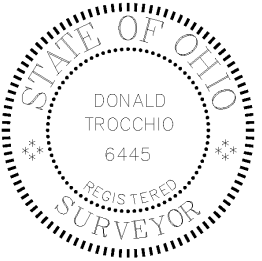
Camp James A. Garfield
Joint Military Training Center



Portage & Trumbull County
LOCATOR MAP



Ohio Army National Guard



Produced in December 2018 for:



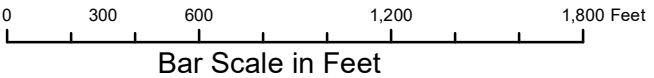
**US Army Corps of
Engineers**

600 Dr. Martin Luther King Jr. Place
Louisville, KY 40202

Louisville District



Projection Datum is NAD83, Ohio State
Plane Rectangular Grid, North Zone

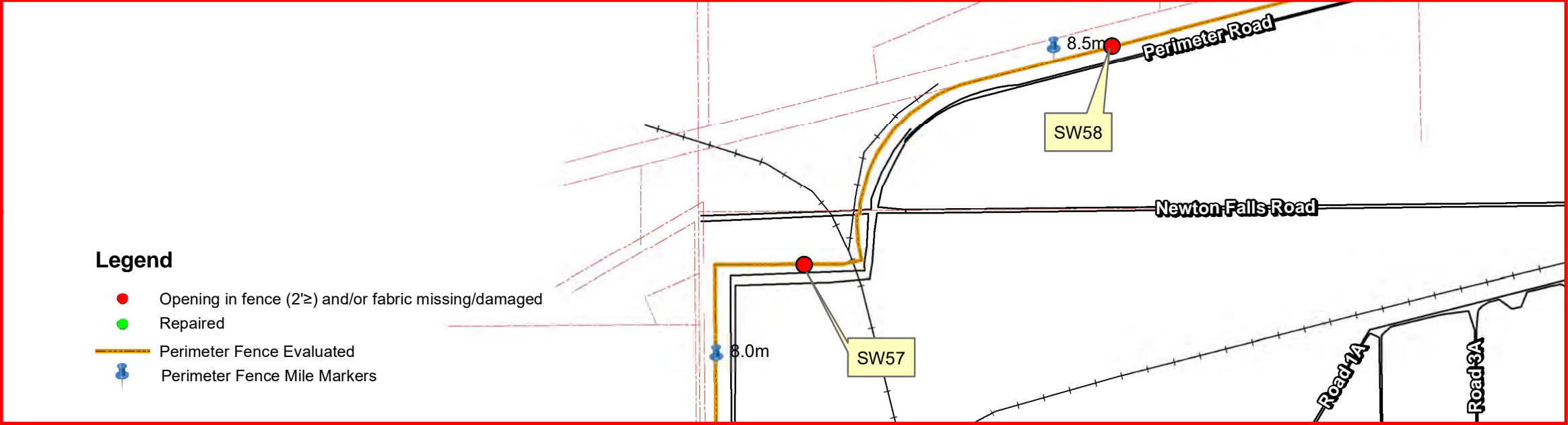


Camp James A. Garfield JMTc
1438 State Route 534 SW
Newton Falls, OH 44444
Don Trocchio, PS
don.trocchio@chenega.com

MGRS 17T NF01946150 (NAD83)

DETAIL SHEET FOR SW57

DETAIL SHEET FOR SW58

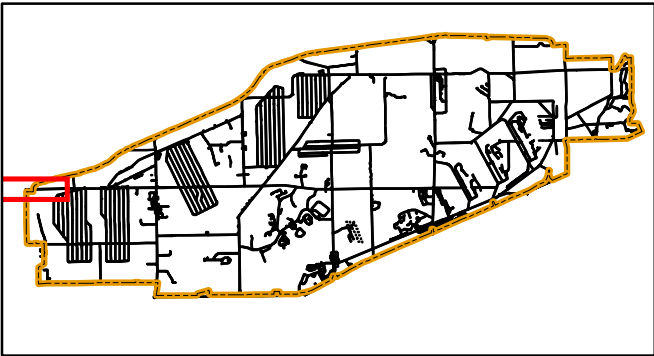


LAND USE CONTROL (LUC) 2018 ANNUAL PERIMETER FENCE INSPECTION

PHOTO SW58 discovered 12/17/2018



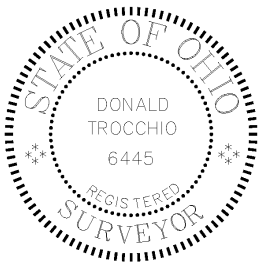
Camp James A. Garfield
Joint Military Training Center



Portage & Trumbull County
LOCATOR MAP



Ohio Army National Guard



Produced in December 2018 for:



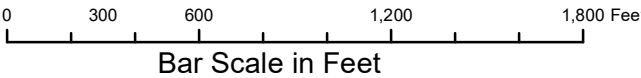
**US Army Corps of
Engineers**

600 Dr. Martin Luther King Jr. Place
Louisville, KY 40202

Louisville District



Projection Datum is NAD83, Ohio State
Plane Rectangular Grid, North Zone

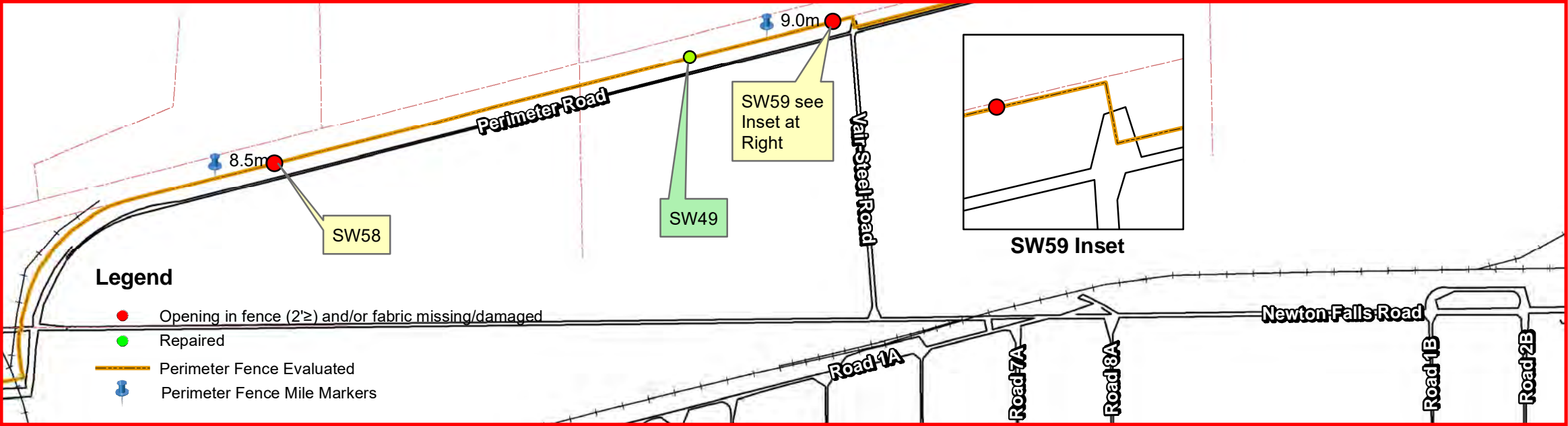


Camp James A. Garfield JMTc
1438 State Route 534 SW
Newton Falls, OH 44444
Don Trocchio, PS
don.trocchio@chenega.com

MGRS 17T NF01946150 (NAD83)

DETAIL SHEET FOR SW58

DETAIL SHEET FOR SW59

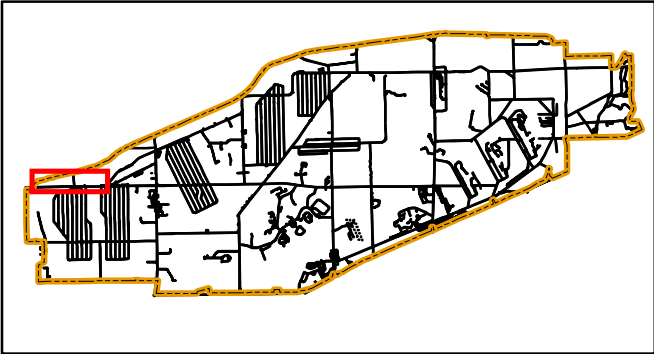


LAND USE CONTROL (LUC) 2018 ANNUAL PERIMETER FENCE INSPECTION

PHOTO SW59 discovered 12/18/2018



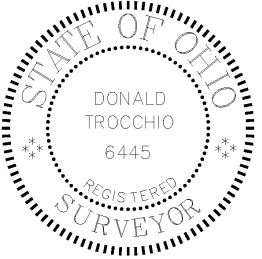
Camp James A. Garfield
Joint Military Training Center



Portage & Trumbull County
LOCATOR MAP



Ohio Army National Guard



Produced in December 2018 for:



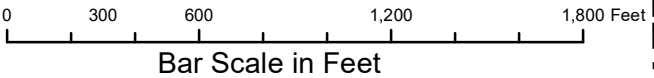
**US Army Corps of
Engineers**

600 Dr. Martin Luther King Jr. Place
Louisville, KY 40202

Louisville District



Projection Datum is NAD83, Ohio State
Plane Rectangular Grid, North Zone

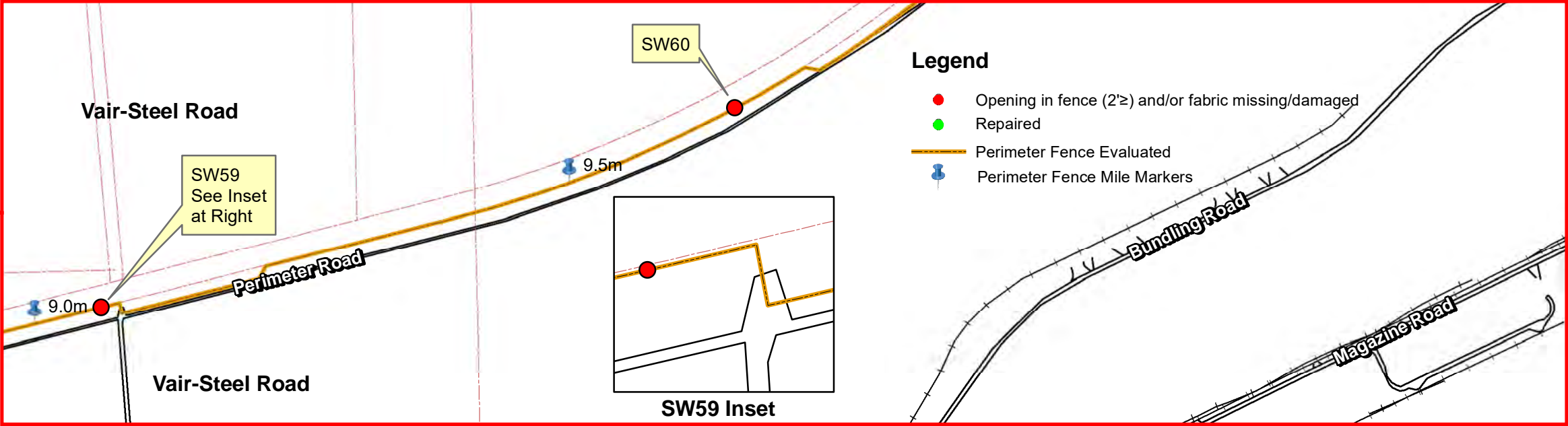


Camp James A. Garfield JMTC
1438 State Route 534 SW
Newton Falls, OH 44444
Don Trocchio, PS
don.trocchio@chenega.com

MGRS 17T NF01946150 (NAD83)

DETAIL SHEET FOR SW59

DETAIL SHEET FOR SW60

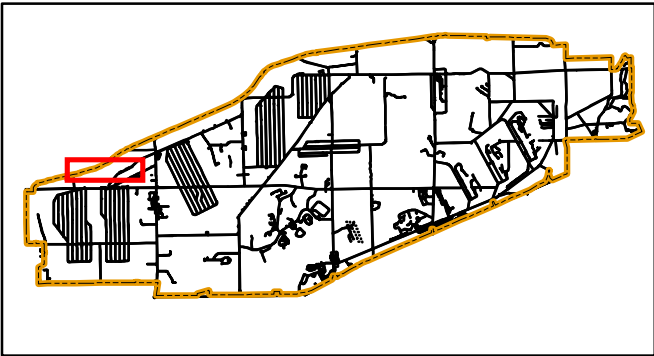


LAND USE CONTROL (LUC) 2018 ANNUAL PERIMETER FENCE INSPECTION

PHOTO SW60 discovered 12/18/2018



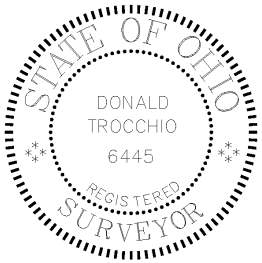
Camp James A. Garfield
Joint Military Training Center



Portage & Trumbull County
LOCATOR MAP



Ohio Army National Guard



Produced in December 2018 for:



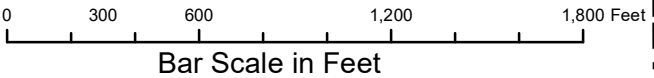
**US Army Corps of
Engineers**

600 Dr. Martin Luther King Jr. Place
Louisville, KY 40202

Louisville District



Projection Datum is NAD83, Ohio State
Plane Rectangular Grid, North Zone

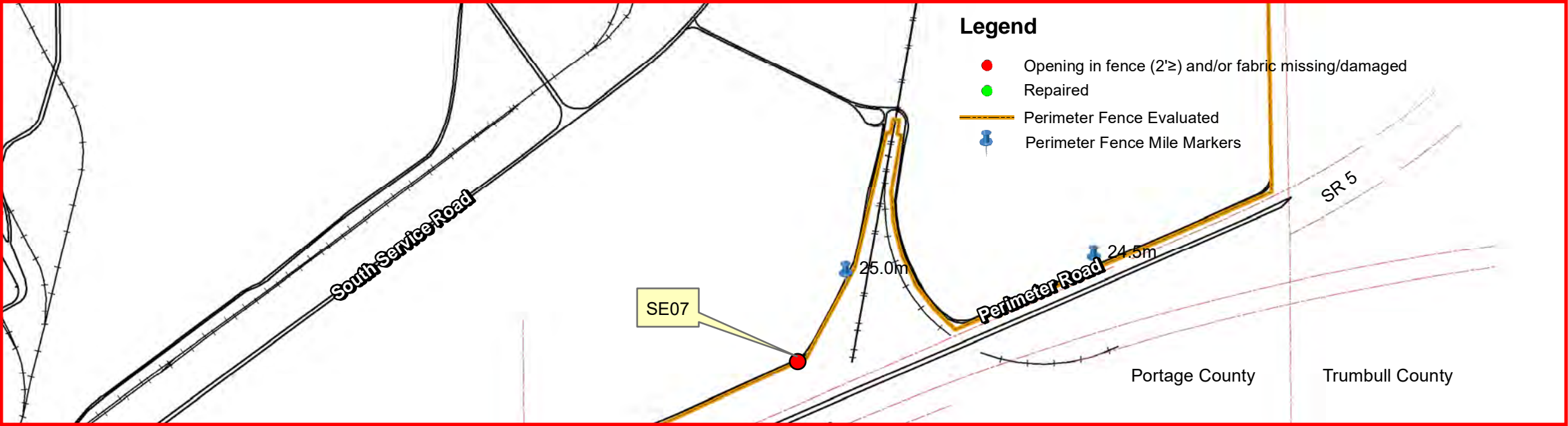


Camp James A. Garfield JMTc
1438 State Route 534 SW
Newton Falls, OH 44444
Don Trocchio, PS
don.trocchio@chenega.com

MGRS 17T NF01946150 (NAD83)

DETAIL SHEET FOR SW60

DETAIL SHEET FOR SE07

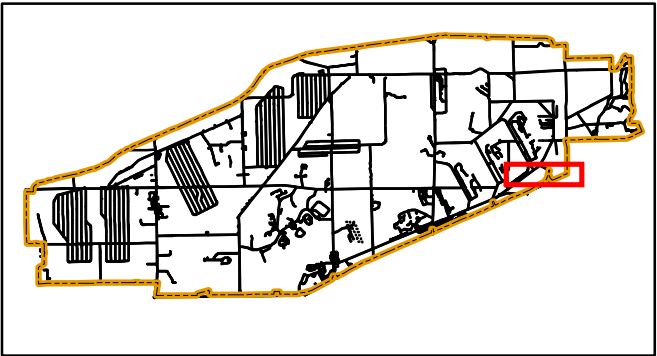


LAND USE CONTROL (LUC) 2018 ANNUAL PERIMETER FENCE INSPECTION

PHOTO SE07 discovered 12/31/2018



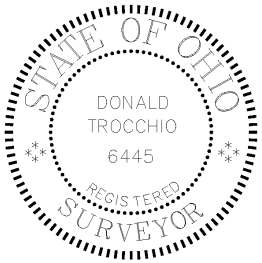
Camp James A. Garfield
Joint Military Training Center



Portage & Trumbull County
LOCATOR MAP



Ohio Army National Guard



Produced in December 2018 for:



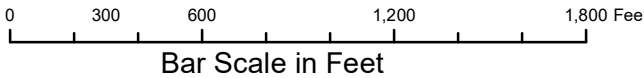
**US Army Corps of
Engineers**

600 Dr. Martin Luther King Jr. Place
Louisville, KY 40202

Louisville District



Projection Datum is NAD83, Ohio State
Plane Rectangular Grid, North Zone



Camp James A. Garfield JMTc
1438 State Route 534 SW
Newton Falls, OH 44444
Don Trocchio, PS
don.trocchio@chenega.com

MGRS 17T NF01946150 (NAD83)

DETAIL SHEET FOR SE07